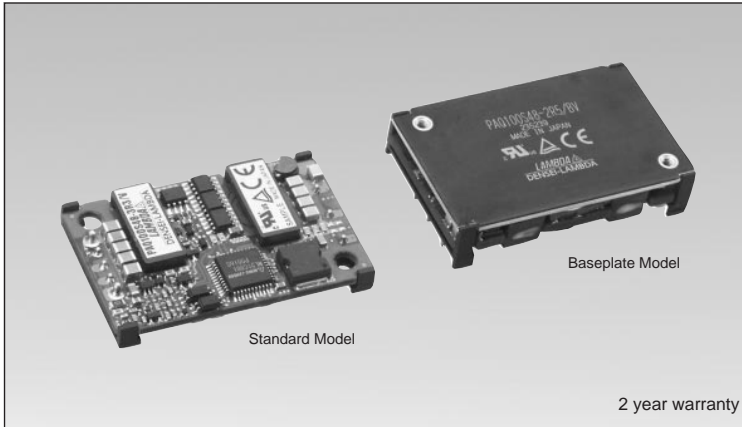


PAQ-S-SERIES

Single output DC-DC power module for TELECOM



Model name

PAQ 50S 48-5/□

Series Name: PAQ 50S
 Output Wattage: 48
 Rated input voltage: 5
 Rated output voltage: 48-5
 Option: □
 Function: S: Simple function
 Option: blank: Protection functions (OVP, OCP) manual reset; V: Protection functions (OVP, OCP) auto-recovery; < Modified models >; *Order for the following is acceptable upon request; P: Positive logic ON/OFF control; B: with baseplate (H=12.7mm)

Features

- Quarter-brick-sized profile: Efficiency 90% was achieved (5V output type) by applying Densai-Lambda's own technology in control IC and synchronous rectifier circuit.
- Compact and high power density: Height 8.5mm.
- Power density 5.5W/cc (PAQ100S48-5).
- Low output voltage model selectable: 1.2V - 5V (5 types).
- No heatsink required: Forced air cooled operation.
- Options: Protection functions auto-recovery.
- Patent and design registration pending.
- 2 year warranty.

Specifications

1. Input voltage range	DC48V (DC36 ~ 76V)
2. Output voltage adj range	1.2V / 1.8V / 2.5V types: -20~ +10% 3.3V / 5V types: -15 ~ +15%
3. Efficiency (Typ.)	PAQ50S48 1.2V : 78% / 1.8V : 83% / 2.5V : 85% / 3.3V : 88% / 5V : 90%
	PAQ100S48 1.2V : 80% / 1.8V : 84% / 2.5V : 86% / 3.3V : 89% / 5V : 90%
4. Cooling Method	Forced air Cooling
5. Operating ambient temperature	-40 ~ +85 deg. C (output derating required depending on the temperature condition)
6. Withstand voltage	Input-output isolation type: DC1.5kV, 1 min., between input and output
7. Standard functions	On/Off control, overcurrent protection, overvoltage protection, overtemperature protection
8. Options	/V: Overvoltage protection auto-recovery, overcurrent protection auto-recovery
9. Safety standard	Approved by UL60950, CSA60950, and EN60950 CE marking applied
10. Dimensions (W×H×D)	36.8mm × 8.5mm × 57.9mm (lead pin length excluded)

- Request customer specification for further details of specifications, outline, characteristics, etc. Read the instruction manual before usage.
- Contact us about delivery before ordering.

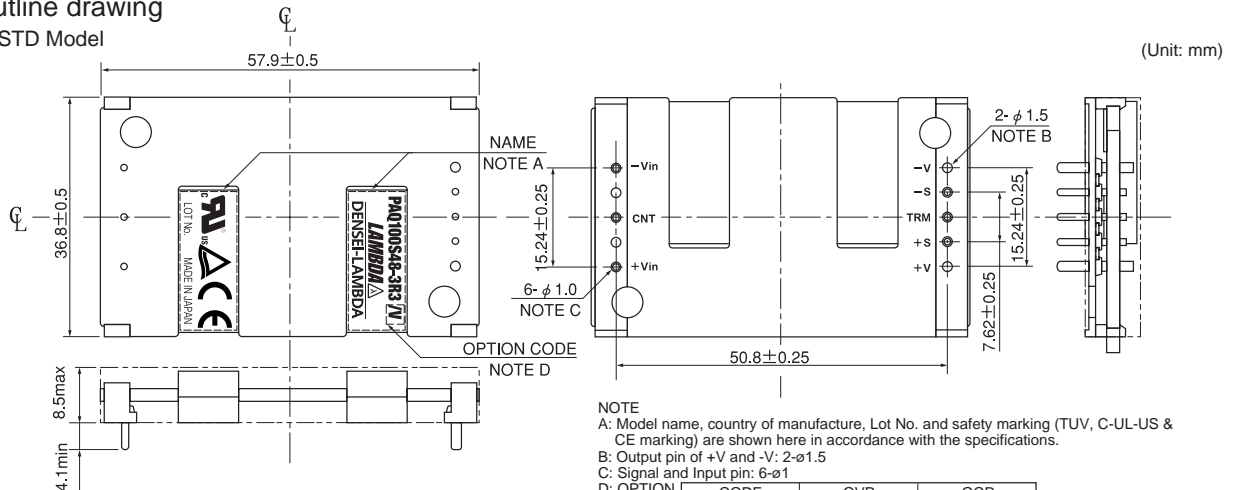
Product lineup

Model name	Output voltage	Output current	Output power	UL	CSA	EN
PAQ50S48	PAQ50S48-1R2	1.2V	12A	14.4W	○	○
	PAQ50S48-1R8	1.8V	12A	21.6W	○	○
	PAQ50S48-2R5	2.5V	12A	30.0W	○	○
	PAQ50S48-3R3	3.3V	12A	39.6W	○	○
	PAQ50S48-5	5.0V	10A	50.0W	○	○
PAQ100S48	PAQ100S48-1R2	1.2V	25A	30.0W	○	○
	PAQ100S48-1R8	1.8V	25A	45.0W	○	○
	PAQ100S48-2R5	2.5V	25A	62.5W	○	○
	PAQ100S48-3R3	3.3V	25A	82.5W	○	○
	PAQ100S48-5	5.0V	20A	100.0W	○	○

○ : Safety standard approved

Outline drawing

- STD Model



NOTE
 A: Model name, country of manufacture, Lot No. and safety marking (TUV, C-UL-US & CE marking) are shown here in accordance with the specifications.
 B: Output pin of +V and -V: 2-φ1.5
 C: Signal and Input pin: 6-φ1

D: OPTION

CODE	OVP	OCP
NOTHING (STANDARD)	SHUT DOWN (ON/OFF CONT. RESET OR MANUAL RESET)	SHUT DOWN (ON/OFF CONT. RESET OR MANUAL RESET)
/V	AUTO RESTART	AUTO RESTART

Power Module