



SAW Components

Data Sheet B3588





SAW Components

B3588

Low Loss Filter

915,00 MHz

Preliminary Data

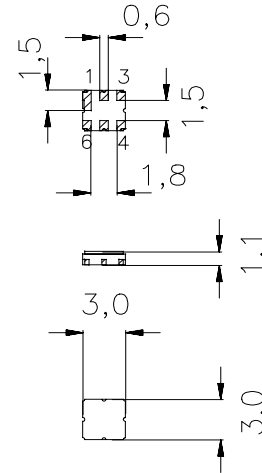
Features

- RF low loss filter for remote control receivers
- Low amplitude ripple
- Hermetically sealed ceramic package
- No matching network required for operation at 50 Ω
- Package for **Surface Mounted Technology (SMT)**

Terminals

- Ni, gold-plated

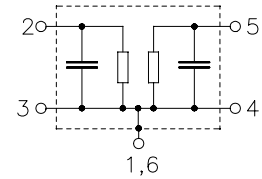
Ceramic package DCC6C



Dimensions in mm, approx. weight 0,037 g

Pin configuration

- | | |
|------------|--------|
| 2 | Input |
| 5 | Output |
| 1, 3, 4, 6 | Ground |



Type	Ordering code	Marking and Package according to	Packing according to
LD77A	B39921-B3588-U410	C61157-A7-A67	F61074-V8088-Z000

Electrostatic Sensitive Device (ESD)

Maximum ratings

Operable temperature range	T	0/+ 70	°C	
Storage temperature range	T_{stg}	-40/+ 85	°C	
DC voltage	V_{DC}	0	V	
Source power	P_S	0	dBm	source impedance 50 Ω



SAW Components

B3588

Low Loss Filter

915,00 MHz

Preliminary Data

Characteristics

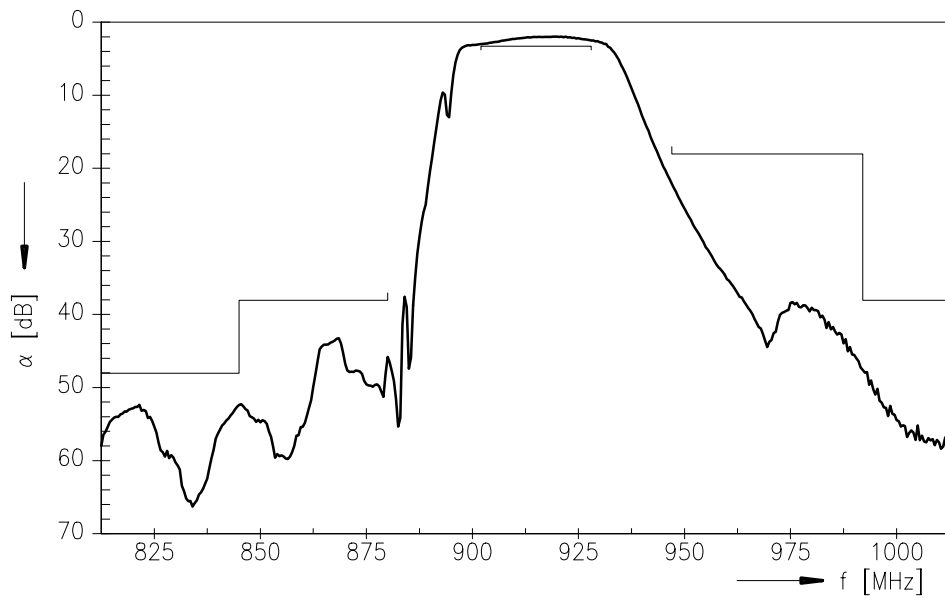
Operating temperature range: $T = 0 \dots 70 \text{ }^\circ\text{C}$
 Terminating source impedance: $Z_S = 50 \text{ } \Omega$
 Terminating load impedance: $Z_L = 50 \text{ } \Omega$

		min.	typ.	max.	
Center frequency	f_c	—	915,00	—	MHz
Maximum insertion attenuation	α_{\max}	—	2,9	3,3	dB
902,00 ... 928,00 MHz					
Amplitude ripple	$\Delta\alpha$	—	0,9	1,5	dB
902,00 ... 928,00 MHz					
Relative attenuation (relative to α_{\max})	α_{rel}				
10,00 ... 800,00 MHz		50,0	55,0	—	dB
800,00 ... 845,00 MHz		45,0	50,0	—	dB
845,00 ... 880,00 MHz		35,0	43,0	—	dB
947,00 ... 992,00 MHz		15,0	22,0	—	dB
992,00 ... 1020,00 MHz		35,0	45,0	—	dB
1020,00 ... 1200,00 MHz		45,0	50,0	—	dB
Temperature coefficient of frequency	TC_f	—	-30	—	ppm/K

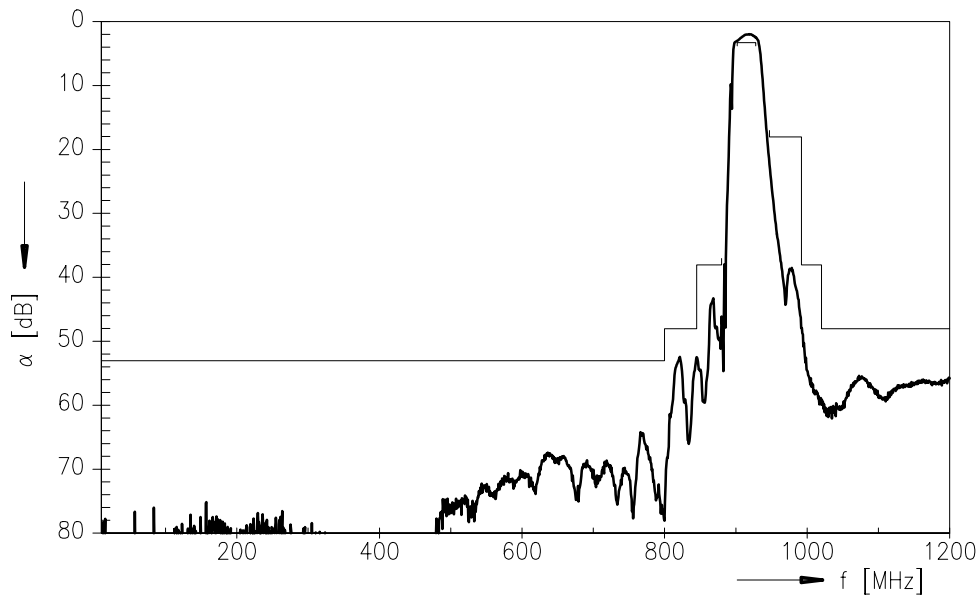


Preliminary Data

Transfer function



Transfer function (wideband)





SAW Components

B3588

Low Loss Filter

915,00 MHz

Preliminary Data

Published by EPCOS AG

Surface Acoustic Wave Components Division, SAW CE AE PD

P.O. Box 80 17 09, D-81617 München

© EPCOS AG 2002. All Rights Reserved. Reproduction, publication and dissemination of this brochure and the information contained therein without EPCOS' prior express consent is prohibited.

The information contained in this brochure describes the type of component and shall not be considered as guaranteed characteristics. Purchase orders are subject to the General Conditions for the Supply of Products and Services of the Electrical and Electronics Industry recommended by the ZVEI (German Electrical and Electronic Manufacturers' Association), unless otherwise agreed.

This brochure replaces the previous edition.

For questions on technology, prices and delivery please contact the Sales Offices of EPCOS AG or the international Representatives.

Due to technical requirements components may contain dangerous substances. For information on the type in question please also contact one of our Sales Offices.