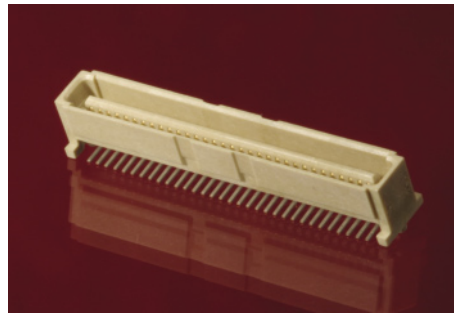


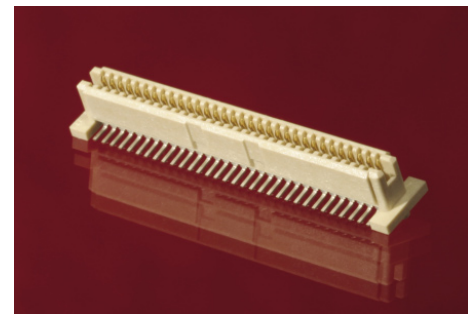


1.00mm (.039") Pitch Mezzanine Connectors

- Meets IEEE 1386 standard (64 circuit)
- Dual row, SMT, vertical stacking
- Leaf-style design protects pins
- Low insertion force
- For use in combinations of 1 to 4 mated pairs
- Current: 1.0A
- Housing: Glass-filled LCP, UL 94V-0
- Contacts: Phosphor Bronze
- Plating: 30µ" Gold min. (except where noted)
- RoHS compliant Lead free process compatible



Plug



Receptacle

INFORMATION

Mated Stack Height	Pegs	Packaging	Order No.			
			64 Circuit		84 Circuit	
			Plug	Receptacle	Plug	Receptacle
8.00mm (.315")	Yes	Tape and Reel	71436-0464	71439-0464	71741-2001	71742-0003* or 71742-0006
	Yes	Tube	71436-0164	71439-0164	Contact Molex	71742-0004
	No	Tape and Reel	71436-0864	71439-0864	71741-2002	71742-0001* or 71742-0005
	No	Tube	71436-0564	Contact Molex	Contact Molex	Contact Molex
9.00mm (.354")	Yes	Tape and Reel	71436-1464	71439-0464		
	Yes	Tube	71436-1164	71439-0164		
	No	Tape and Reel	71436-1864	71439-0864		
	No	Tube	71436-1564	Contact Molex		
10.00mm (.394")	Yes	Tape and Reel	71436-2464	71439-0464	71741-0002* or 71741-0004	71742-0003* or 71742-0006
	Yes	Tube	71436-2164	71439-0164	71741-0001*	71742-0004
	No	Tape and Reel	71436-2864	71439-0864	71741-0003	71742-0001* or 71742-0005
	No	Tube	71436-2564	Contact Molex	Contact Molex	Contact Molex
11.00mm (.433")	Yes	Tape and Reel	71436-1464	71439-1464		
	Yes	Tube	71436-1164	71439-1164		
	No	Tape and Reel	71436-1864	71439-1864		
	No	Tube	71436-1564	71439-1564		
12.00mm (.472")	Yes	Tape and Reel	71436-2464	71439-1464	71741-0002* or 71741-0004	71742-2001* or 71742-2003
	Yes	Tube	71436-2164	71439-1164	71741-0002* or 71741-0004	71742-2002*
	No	Tape and Reel	71436-2864	71439-1864	Contact Molex	Contact Molex
	No	Tube	71436-2564	71439-1564	Contact Molex	Contact Molex
13.00mm (.512")	Yes	Tape and Reel	71436-2464	71439-2464	71741-2001	71742-3003
	Yes	Tube	71436-2164	71439-2164	Contact Molex	Contact Molex
	No	Tape and Reel	71436-2864	71439-2864	71741-2002	71742-3001
	No	Tube	71436-2564	Contact Molex	Contact Molex	Contact Molex
14.00mm (.551")	Yes	Tape and Reel	71436-1464	71439-3464		
	Yes	Tube	71436-1164	71439-3164		
	No	Tape and Reel	71436-1864	71439-3864		
	No	Tube	71436-1564	71439-3564		
15.00mm (.591")	Yes	Tape and Reel	71436-2464	71439-3464	71741-0002* or 71741-0004	71742-3003
	Yes	Tube	71436-2164	71439-3164	71741-0001*	Contact Molex
	No	Tape and Reel	71436-2864	71439-3864	71741-0003	71742-3001
	No	Tube	71436-2564	71439-3564	Contact Molex	Contact Molex

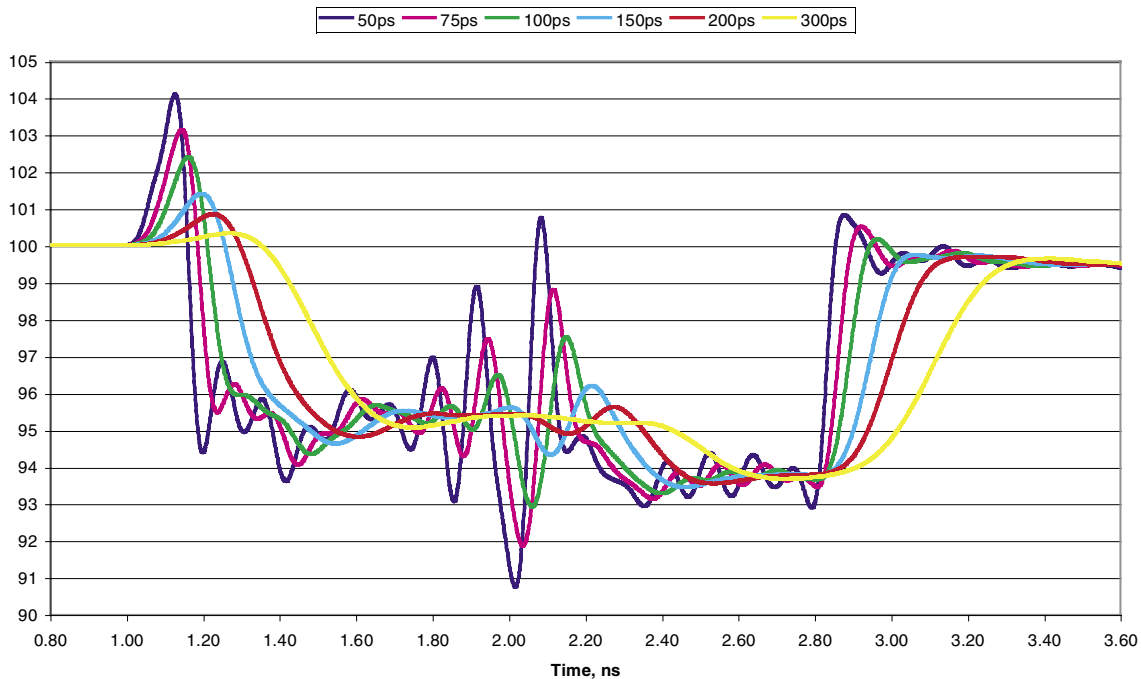
Note: These order numbers are the recommended plug and receptacle combinations for mated stack heights per EIA standard 700 AAAB. Per EIA standard, board stack height measured from facing surfaces of parallel circuit boards includes solder thickness allowance of 0.10mm (.004") per side.

*.25µ mm (10µ") Gold plating

As the need for faster signal speeds increases, the need for better performance and signal integrity performance of connectors also increases. The 1.00mm (.039") mezzanine connectors from Molex provide the excellent performance required by today's high speed systems. For example, Molex 1.00mm (.039") mezzanine connectors can be used in a 5.0 Gbps application by using grounds between each differential pair (G-S-S-G), resulting in a differential

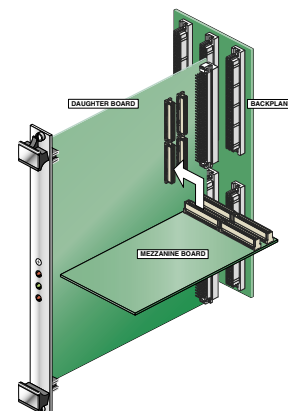
impedance of 100 ohms +/- 10% and 2.23% NEXT at a 50psec (10/90%) risetime. At -3dB, the insertion loss for the Molex 1.00mm (.039") mezzanine connectors is 7.3GHz. At -10dB, the differential return loss is 6.2GHz. These mezzanine connectors can comfortably handle the higher speed data rates required for PCI Express as the 1X standard moves toward 4.0 to 5.0 Gbps.

Standard Mezzanine (71436/71439) 10.00mm (.394") Stack Height: Differential Impedance, all Rise Times are 10%-90%



APPLICATIONS

- VME, cPCI and ATCA Cards
- LAN and WAN Network Cards
- Telecommunications
- PCs
- Printers
- Workstations
- Digital and Analog I/O Cards
- Controller Cards
- Graphics Cards
- Bus Analyzers
- Instrumentation Equipment



Americas Headquarters
Lisle, Illinois 60532 U.S.A.
1-800-78MOLEX
amerinfo@molex.com

Far East North Headquarters
Yamato, Kanagawa, Japan
81-462-65-2324
feninfo@molex.com

Far East South Headquarters
Jurong, Singapore
65-6-268-6868
fesinfo@molex.com
Visit our website at www.molex.com

European Headquarters
Munich, Germany
49-89-413092-0
eurinfo@molex.com

Corporate Headquarters
2222 Wellington Ct.
Lisle, IL 60532 U.S.A.
630-969-4550
Fax: 630-969-1352