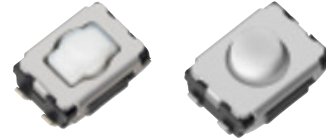


### 4.7×3.5 mm Square Light Touch Switches

Japan

Type: **EVQP2**

An extra-small-sized switch for creating medium and short push travel and meeting the needs for a high-operating force and long operation life



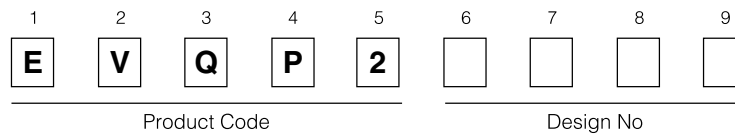
#### ■ Features

- Creating medium and short push travel
- Meeting the need for a high operating force and long operation life
- High mountability by J-bent(4 terminals)

#### ■ Recommended Applications

- Keyless Entry Systems (Automotive)
- Car Audio Equipment
- Audio Visual Equipment

#### ■ Explanation of Part Numbers

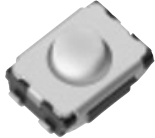
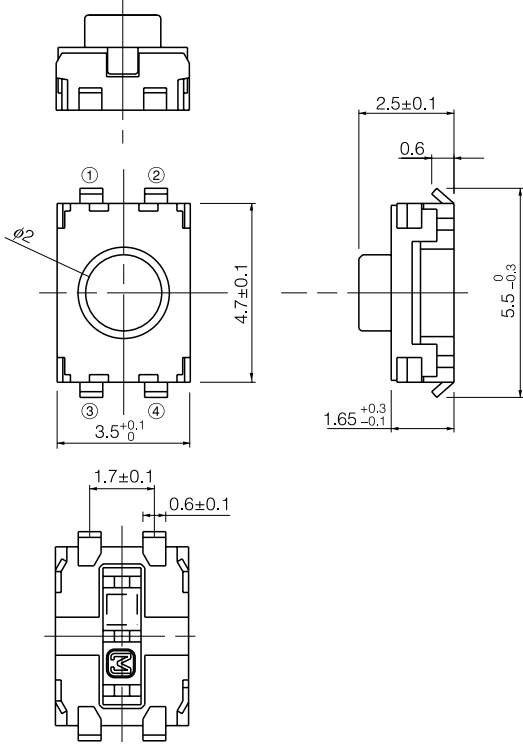
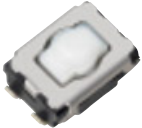
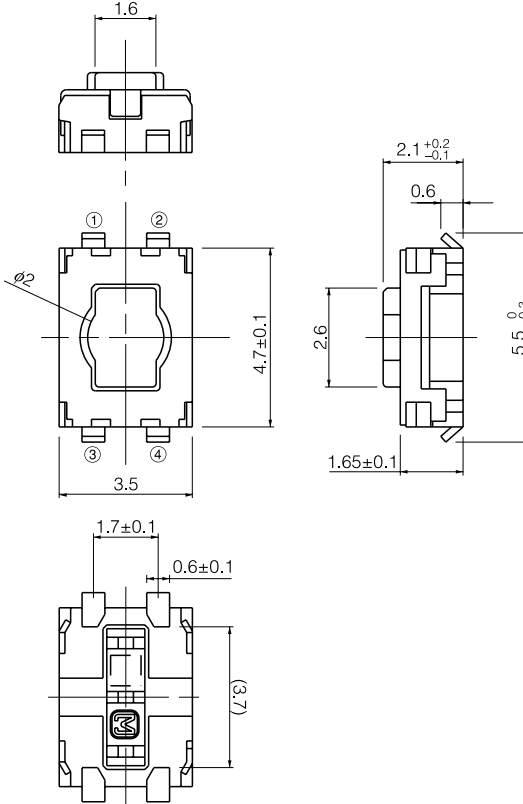


#### ■ Major Specifications

		Medium Push Travel	Short Push Travel
Electrical	Power	20 mA 15 V dc max.	
	Contact Resistance	100 mΩ max.	
	Insulation Resistance	100 mΩ min.	
	Dielectric Withstanding Voltage	250 V ac (1 minute)	
	Bouncing	10 ms max.	
Mechanical	Operating Force	2.5 N, 3.5 N 5 N	1 N, 1.6 N, 2.4 N, 3.5 N
	Travel	0.70 mm	0.25 mm
	Push Strength	50 N (1 minute)	
Endurance	Operating Life	2.5 N: 1000000 cycles min.	1 N, 1.6 N: 1000000 cycles min.
		3.5 N: 500000 cycles min.	2.4 N: 500000 cycles min.
		5 N: 200000 cycles min.	3.5 N: 200000 cycles min.
Operating Temperature		-40 °C to 85 °C	
Storage Temperature		-40 °C to 85 °C (Taping -20 °C to +60 °C)	
Minimum Quantity/Packing Unit		4000 pcs. (Reel Pack)	
Quantity/Carton		20000 pcs./case	

Design and specifications are subject to change without notice. Ask factory for technical specifications before purchase and/or use.  
Whenever a doubt about safety arises from this product, please contact us immediately for technical consultation.

■ Dimensions in mm (not to scale)

<p><b>No. 1</b></p> <p>Japan</p> <p>Medium push travel With J-bent terminals (With Ground terminal)</p> 	 <p>Top view dimensions: <math>4.7 \pm 0.1</math> (height), <math>3.5 \pm 0.1</math> (width), <math>1.7 \pm 0.1</math> (terminal width), <math>0.6 \pm 0.1</math> (terminal offset), <math>\phi 2</math> (mounting hole diameter).</p> <p>Side view dimensions: <math>2.5 \pm 0.1</math> (total height), <math>0.6</math> (terminal height), <math>5.5 \pm 0.3</math> (main body height), <math>1.65 \pm 0.1</math> (base height).</p> <p>Bottom view dimensions: <math>1.7 \pm 0.1</math> (terminal width), <math>0.6 \pm 0.1</math> (terminal offset).</p> <p>Circuit diagram: Shows a switch with terminals ①, ②, ③, and ④. Terminals ③ and ④ are connected to ground.</p> <p>Recommended land pattern: Shows a PCB layout with dimensions <math>6.6 \pm 0.1</math> (total width), <math>3.7 \pm 0.1</math> (terminal width), <math>2.7 \pm 0.1</math> (height), and <math>0.7 \pm 0.1</math> (spacing).</p>
<p><b>No. 2</b></p> <p>Japan</p> <p>Short push travel With J-bent terminals (With Ground terminal)</p> 	 <p>Top view dimensions: <math>1.6</math> (terminal width), <math>4.7 \pm 0.1</math> (height), <math>3.5</math> (width), <math>\phi 2</math> (mounting hole diameter).</p> <p>Side view dimensions: <math>2.1 \pm 0.2</math> (total height), <math>0.6</math> (terminal height), <math>5.5 \pm 0.3</math> (main body height), <math>2.6</math> (base height), <math>1.65 \pm 0.1</math> (base height).</p> <p>Bottom view dimensions: <math>1.7 \pm 0.1</math> (terminal width), <math>0.6 \pm 0.1</math> (terminal offset), <math>(3.7)</math> (width).</p> <p>Circuit diagram: Shows a switch with terminals ①, ②, ③, and ④. Terminals ③ and ④ are connected to ground.</p> <p>Recommended land pattern: Shows a PCB layout with dimensions <math>6.6 \pm 0.1</math> (total width), <math>3.7 \pm 0.1</math> (terminal width), <math>2.7 \pm 0.1</math> (height), <math>1.0 \pm 0.1</math> (spacing), and <math>0.7 \pm 0.1</math> (spacing).</p>

Design and specifications are subject to change without notice. Ask factory for technical specifications before purchase and/or use.  
Whenever a doubt about safety arises from this product, please contact us immediately for technical consultation.