

**PLEASE CHECK WWW.MOLEX.COM FOR LATEST PART INFORMATION**

**Part Number:** [0533092270](#)  
**Status:** **Active**  
**Description:** 0.80mm (.031") Pitch Board-to-Board Header, Surface Mount, Dual Row, Right Angle, Lead-free, 22 Circuits

**Documents:**

<a href="#">3D Model</a>	<a href="#">Product Specification PS-52588-031 (PDF)</a>
<a href="#">Drawing (PDF)</a>	<a href="#">RoHS Certificate of Compliance (PDF)</a>
<a href="#">Product Specification PS-52465-014 (PDF)</a>	

**General**

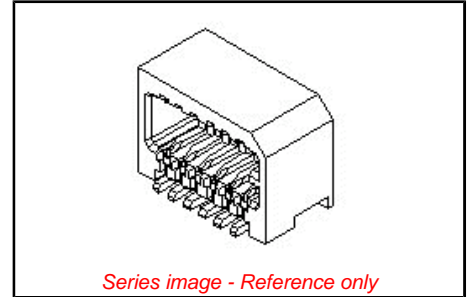
Product Family	PCB Headers
Series	<a href="#">53309</a>
Application	Board-to-Board
Product Name	N/A

**Physical**

Breakaway	No
Circuits (Loaded)	22
Circuits (maximum)	22
Color - Resin	Natural
Durability (mating cycles max)	30
First Mate / Last Break	No
Glow-Wire Compliant	No
Guide to Mating Part	No
Keying to Mating Part	None
Lock to Mating Part	Yes
Mated Height (in)	0.222 In
Mated Height (mm)	5.65 mm
Material - Metal	Phosphor Bronze
Material - Plating Mating	Tin
Material - Plating Termination	Tin
Material - Resin	High Temperature Thermoplastic
Number of Rows	2
Orientation	Right Angle
PC Tail Length (in)	0.016 In
PC Tail Length (in)	0.020 In
PC Tail Length (mm)	0.40 mm
PC Tail Length (mm)	0.50 mm
PCB Locator	No
PCB Retention	None
Packaging Type	Embossed Tape on Reel
Pitch - Mating Interface (in)	0.031 In
Pitch - Mating Interface (mm)	0.80 mm
Plating min: Mating (µin)	40
Plating min: Mating (µm)	1
Plating min: Termination (µin)	40
Plating min: Termination (µm)	1
Polarized to PCB	No
Shrouded	Fully
Stackable	No
Temperature Range - Operating	-20°C to +105°C
Termination Interface: Style	Surface Mount

**Electrical**

Current - Maximum	0.5A
Voltage - Maximum	50V



<p><b>EU RoHS</b>  <b>ELV and RoHS</b>  <b>Compliant</b>  <b>REACH SVHC</b>  <b>Contains SVHC: No</b>  <b>Halogen-Free</b>  <b>Status</b>  <b>Not Reviewed</b></p>	<p><b>China RoHS</b></p>
<p><b>Need more information on product environmental compliance?</b></p> <p>Email <a href="mailto:productcompliance@molex.com">productcompliance@molex.com</a>  Please visit the <a href="#">Contact Us</a> section for any non-product compliance questions.</p>	

**Search Parts in this Series**  
[53309](#) Series

**Mates With**  
52465 Board-to-Board Receptacle

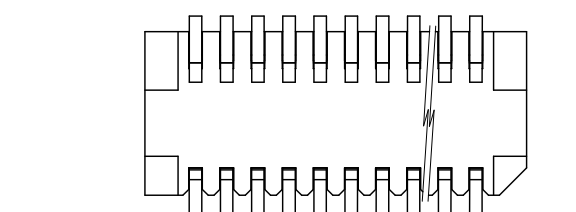
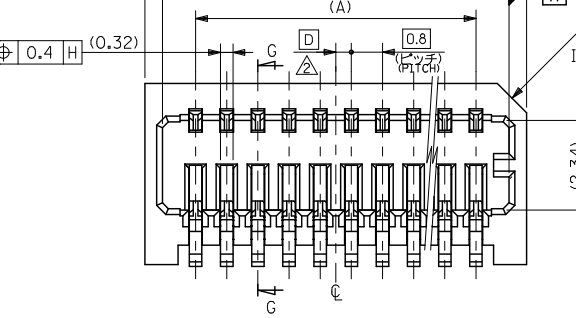
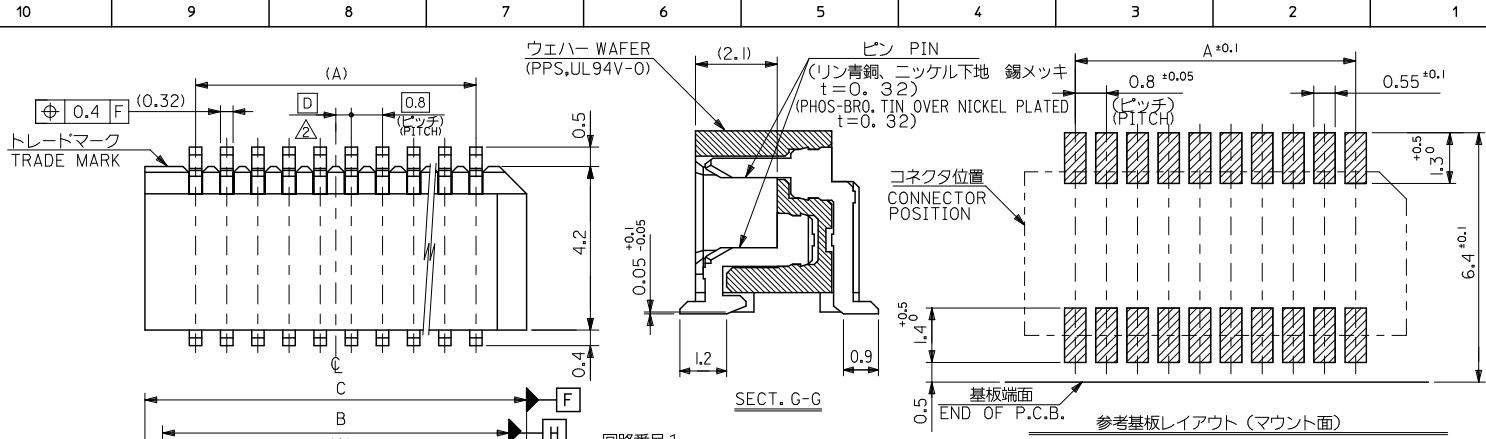
**Material Info**

**Reference - Drawing Numbers**

Product Specification	PS-52465-014
Product Specification	PS-52588-031
Product Specification	RPS-52465-042
Product Specification	RPS-52465-047
Product Specification	RPS-52465-049
Product Specification	RPS-52588-040
Product Specification	RPS-52588-041
Sales Drawing	SD-53309-011
Sales Drawing	SD-53309-012

This document was generated on 11/05/2009

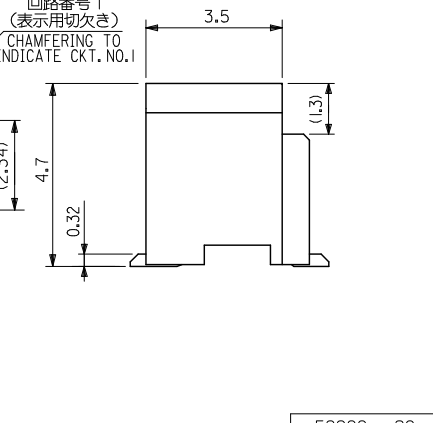
**PLEASE CHECK [WWW.MOLEX.COM](http://WWW.MOLEX.COM) FOR LATEST PART INFORMATION**



**注記 NOTES**

1. 嵌合相手 : 52465,52588 シリーズ  
MATE WITH : 52465,52588 SERIES
2. ウエハーの  $\phi$  から隣接するピンの  $\phi$  迄の位置を示す。  
SHOW POSITION FROM  $\phi$  OF WAFER TO  $\phi$  OF ADJACENT PINS.
3. 本製品は 53309-\*\*27 の鉛フリー品である。  
THIS PRODUCT IS LEAD FREE OF 53309-\*\*27

ib\_frame\_A3\_J\_ME\_S  
Rev. E 2006/04/15



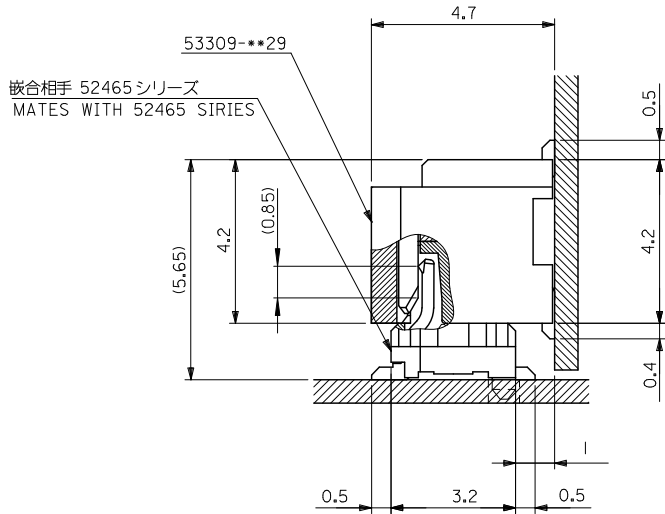
53309-**29	0.8	5.8	4.9	3.2	53309-1029	10
MODEL NO.	D	C	B	A	MATERIAL NO.	極致CKT.

REVISED	DESCRIPTION	GENERAL TOLERANCES (UNLESS SPECIFIED)	DIMENSION STYLE	SCALE	DESIGN UNITS	THIRD ANGLE PROJECTION
EC NO: J2010-1285	2009/12/17	10 UNDER $\pm 0.2$	MM ONLY	---	METRIC	
DRW: YONODZ	2009/12/17	10 OVER 30 UNDER $\pm 0.25$	DRAWN BY	DATE	TITLE	
CHKD: SMARYAMA	2009/12/17	30 OVER $\pm 0.3$	M. NINOMIYA	2004/03/10	0.8 B/B CONN.WAFER ASS'Y	
APPR: SMARYAMA	2009/12/17	ANGULAR $\pm 3^\circ$	CHECKED BY	DATE	R/A SMT(WITHOUT BOSS)	
		DRAFT WHERE APPLICABLE	K. TOJO	2004/03/10		
		MUST REMAIN	APPROVED BY	DATE		
		WITHIN DIMENSIONS	M. SASAO	2004/03/10		
			MATERIAL NO.	SEE TABLE	DOCUMENT NO.	
					SD-53309-011	
			SIZE			SHEET NO.
			A3			1 OF 2

0.4	17.8	16.9	15.2	53309-4029	40
0.8	17.0	16.1	14.4	-3829	38
0.4	16.2	15.3	13.6	-3629	36
0.8	15.4	14.5	12.8	-3429	34
0.4	14.6	13.7	12.0	-3229	32
0.8	13.8	12.9	11.2	-3029	30
0.4	13.0	12.1	10.4	-2829	28
0.8	12.2	11.3	9.6	-2629	26
0.4	11.4	10.5	8.8	-2429	24
0.8	10.6	9.7	8.0	-2229	22
0.4	9.8	8.9	7.2	-2029	20
0.8	9.0	8.1	6.4	-1829	18
0.4	8.2	7.3	5.6	-1629	16
0.8	7.4	6.5	4.8	-1429	14
0.4	6.6	5.7	4.0	-1229	12
53309-**29	0.8	5.8	4.9	53309-1029	10

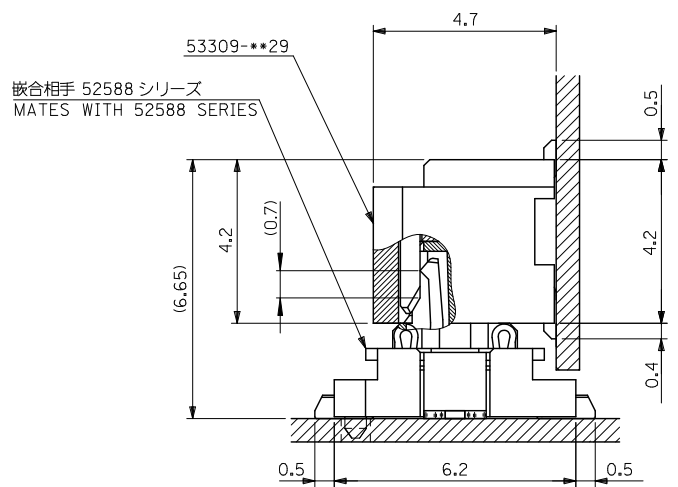
0.4	17.8	16.9	15.2	53309-4029	40
0.8	17.0	16.1	14.4	-3829	38
0.4	16.2	15.3	13.6	-3629	36
0.8	15.4	14.5	12.8	-3429	34
0.4	14.6	13.7	12.0	-3229	32
0.8	13.8	12.9	11.2	-3029	30
0.4	13.0	12.1	10.4	-2829	28
0.8	12.2	11.3	9.6	-2629	26
0.4	11.4	10.5	8.8	-2429	24
0.8	10.6	9.7	8.0	-2229	22
0.4	9.8	8.9	7.2	-2029	20
0.8	9.0	8.1	6.4	-1829	18
0.4	8.2	7.3	5.6	-1629	16
0.8	7.4	6.5	4.8	-1429	14
0.4	6.6	5.7	4.0	-1229	12
53309-**29	0.8	5.8	4.9	53309-1029	10

10 9 8 7 6 5 4 3 2 1



53309-\*\*\*29  
 嵌合相手 52465シリーズ  
 MATES WITH 52465 SERIES

嵌合状態図 (参考)  
 MATED DRAWING(REF.)



53309-\*\*\*29  
 嵌合相手 52588シリーズ  
 MATES WITH 52588 SERIES

嵌合状態図 (参考)  
 MATED DRAWING(REF.)

REVISED EC NO: J2010-1285 DRAWN: YONOD CHKD: SMARYAMA APPR: SMARYAMA 2009/12/17 2009/12/17 2009/12/17	GENERAL TOLERANCES (UNLESS SPECIFIED)		DIMENSION STYLE MM ONLY	SCALE ---	DESIGN UNITS METRIC	THIRD ANGLE PROJECTION
	10 UNDER	±0.2	DRAWN BY M. NINOMIYA	DATE 2004/03/10	TITLE 0.8 B/B CONN. WAFER ASS'Y R/A SMT(WITHOUT BOSS)	
	10 OVER 30 UNDER	±0.25	CHECKED BY K. TOJO	DATE 2004/03/10	APPROVED BY M. SASAO	
	30 OVER	±0.3	DATE 2004/03/10	MATERIAL NO. SEE SHEET 1		DOCUMENT NO. SD-53309-011
	ANGULAR ±3°	DRAFT WHERE APPLICABLE MUST REMAIN WITHIN DIMENSIONS	SIZE A3	THIS DRAWING CONTAINS INFORMATION THAT IS PROPRIETARY TO MOLEX INCORPORATED AND SHOULD NOT BE USED WITHOUT WRITTEN PERMISSION		



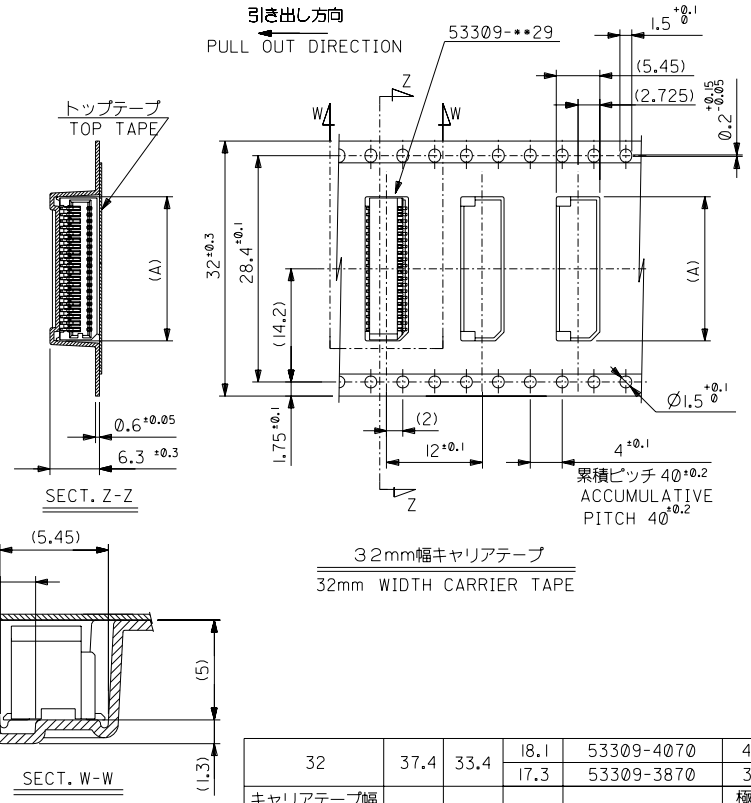
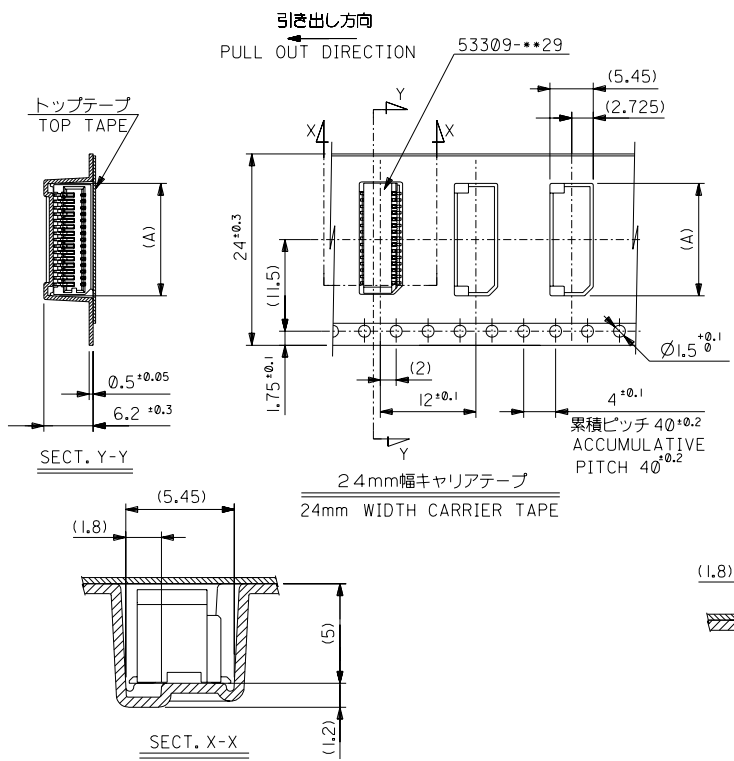
DWG. NO. SD-53309-012

F

D

DIMENSIONS IN METRIC DO NOT SCALE DRAWING

A



24	C	B	(A)	16.5	53309-3670	36
				15.7	53309-3470	34
				14.9	53309-3270	32
				14.1	53309-3070	30
				13.3	53309-2870	28
				12.5	53309-2670	26
				11.7	53309-2470	24
				10.9	53309-2270	22
10.1	53309-2070	20				
キャリアテープ幅 CARRIER TAPE WIDTH	C	B	(A)	MATERIAL NO.	極数 CIRCUIT	

53309-70	MODEL NO.	材料 MATERIAL	32	37.4	33.4	18.1	53309-4070	40
角度 ANGLE	±3°	SHEET 1 OF 2 参照 REFER TO SHEET 1 OF 2	キャリアテープ幅 CARRIER TAPE WIDTH	C	B	17.3	53309-3870	38
30以上 OVER	±0.3	仕上げ FINISH					MATERIAL NO.	極数 CIRCUIT
10以上 30未満 UNDER	±0.25	適用電線範囲 WIRE RANGE						
10未満 UNDER	±0.2	被覆外径 INS. RANGE						
一般公差 GENERAL TOLERANCES	0	新規作成 RELEASED (L2004-2995)						
記号 LTR	変更内容 REVISION RECORD	DR. DATE						
		04/03/10						
		M.NINOMIYA						
		K.TOJO						
		APPRO BY 04/03/10						
		M.SASAO						
		尺度 SCALE						

MOLEX-JAPAN CO.,LTD. 日本モレックス株式会社	
REVISE ONLY ON CAD SYSTEM	
TITLE 名称 0.8 BtB Wafer Assy RA SMT Without Boss Embstp Pkg -LEAD FREE-	
DWG. NO. (SHEET 2 OF 2)	REV 0
SD-53309-012	

THIS DRAWING CONTAINS INFORMATION THAT IS PROPRIETARY TO MOLEX/JAPAN AND SHOULD NOT BE USED WITHOUT WRITTEN PERMISSION  
本図面は日本モレックス(株)の所有する情報を含むもので、当社の許可なく複製を禁止する。 EN-01C(032)MXJ-32