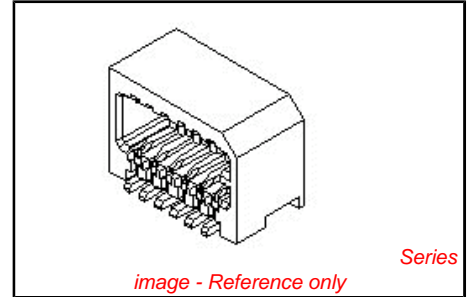


PLEASE CHECK WWW.MOLEX.COM FOR LATEST PART INFORMATION

Part Number: [0533093070](#)
Status: **Active**
Description: 0.80mm (.031") Pitch Board-to-Board Header, Surface Mount, Dual Row, Right Angle, Lead-free, 30 Circuits

Documents:

3D Model	Product Specification PS-52588-031 (PDF)
Drawing (PDF)	Product Specification PS-52588-032 (PDF)
Product Specification PS-52465-014 (PDF)	RoHS Certificate of Compliance (PDF)



General

Product Family	PCB Headers
Series	53309
Application	Board-to-Board
Product Name	N/A

Physical

Breakaway	No
Circuits (Loaded)	30
Circuits (maximum)	30
Color - Resin	Natural
Durability (mating cycles max)	30
First Mate / Last Break	No
Glow-Wire Compliant	No
Guide to Mating Part	No
Keying to Mating Part	None
Lock to Mating Part	Yes
Mated Height (in)	0.222 In, 0.262 In
Mated Height (mm)	5.65 mm, 6.65 mm
Material - Metal	Phosphor Bronze
Material - Plating Mating	Tin
Material - Plating Termination	Tin
Material - Resin	High Temperature Thermoplastic
Number of Rows	2
Orientation	Right Angle
PC Tail Length (in)	0.016 In, 0.020 In
PC Tail Length (mm)	0.40 mm, 0.50 mm
PCB Locator	No
PCB Retention	None
Packaging Type	Embossed Tape on Reel
Pitch - Mating Interface (in)	0.031 In
Pitch - Mating Interface (mm)	0.80 mm
Plating min: Mating (µin)	40
Plating min: Mating (µm)	1
Plating min: Termination (µin)	40
Plating min: Termination (µm)	1
Polarized to PCB	No
Shrouded	Fully
Stackable	No
Temperature Range - Operating	-20°C to +105°C
Termination Interface: Style	Surface Mount

Electrical

Current - Maximum per Contact	0.5A
Voltage - Maximum	50V

EU RoHS ELV and RoHS Compliant REACH SVHC Not Reviewed Halogen-Free Status Not Reviewed	China RoHS 
---	--

Need more information on product environmental compliance?

Email productcompliance@molex.com
 For a multiple part number RoHS Certificate of Compliance, [click here](#)

Please visit the [Contact Us](#) section for any non-product compliance questions.

Search Parts in this Series
[53309Series](#)

Mates With
 Board-to-Board Receptacle [52465](#) , [52588](#)

Material Info

Reference - Drawing Numbers

Product Specification

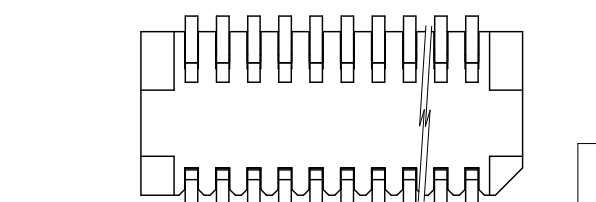
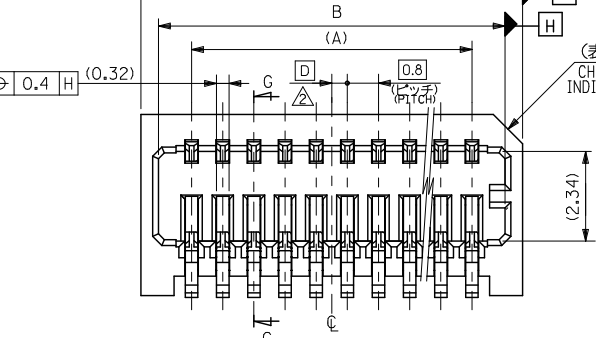
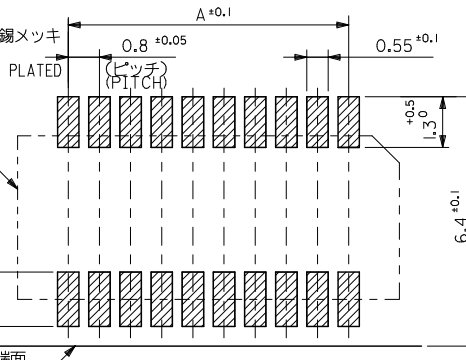
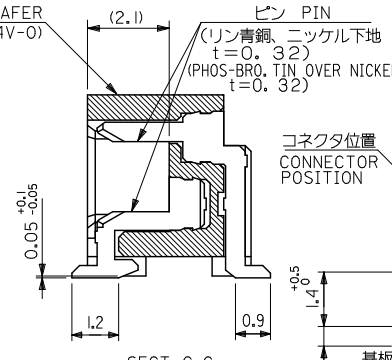
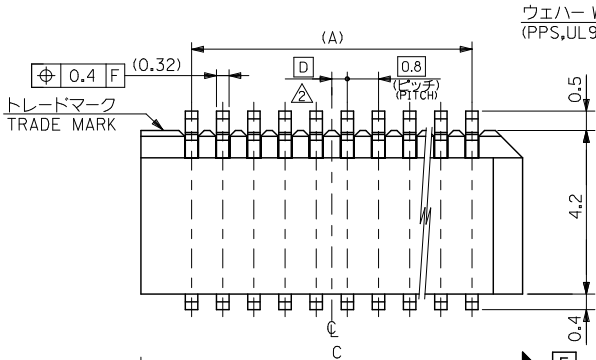
PS-52465-014, PS-52588-031, PS-52588-032,
RPS-52465-042, RPS-52465-047, RPS-52465-049,
RPS-52588-039, RPS-52588-040, RPS-52588-041
SD-53309-011, SD-53309-012

Sales Drawing

This document was generated on 04/16/2010

PLEASE CHECK WWW.MOLEX.COM FOR LATEST PART INFORMATION

10 9 8 7 6 5 4 3 2 1



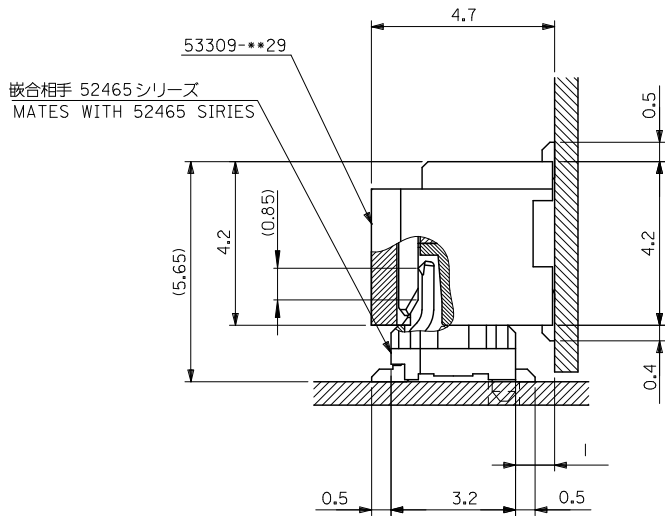
0.4	17.8	16.9	15.2	53309-4029	40
0.8	17.0	16.1	14.4	-3829	38
0.4	16.2	15.3	13.6	-3629	36
0.8	15.4	14.5	12.8	-3429	34
0.4	14.6	13.7	12.0	-3229	32
0.8	13.8	12.9	11.2	-3029	30
0.4	13.0	12.1	10.4	-2829	28
0.8	12.2	11.3	9.6	-2629	26
0.4	11.4	10.5	8.8	-2429	24
0.8	10.6	9.7	8.0	-2229	22
0.4	9.8	8.9	7.2	-2029	20
0.8	9.0	8.1	6.4	-1829	18
0.4	8.2	7.3	5.6	-1629	16
0.8	7.4	6.5	4.8	-1429	14
0.4	6.6	5.7	4.0	-1229	12
53309-***29	0.8	5.8	4.9	53309-1029	10
MODEL NO.	D	C	B	A	MATERIAL NO. 極致CKT.

注記 NOTES

1. 嵌合相手 : 52465,52588 シリーズ MATE WITH : 52465,52588 SERIES
2. ウエハーの ϕ から隣接するピンの ϕ 迄の位置を示す。 SHOW POSITION FROM ϕ OF WAFER TO ϕ OF ADJACENT PINS.
3. 本製品は 53309-***27 の鉛フリー品である。 THIS PRODUCT IS LEAD FREE OF 53309-***27

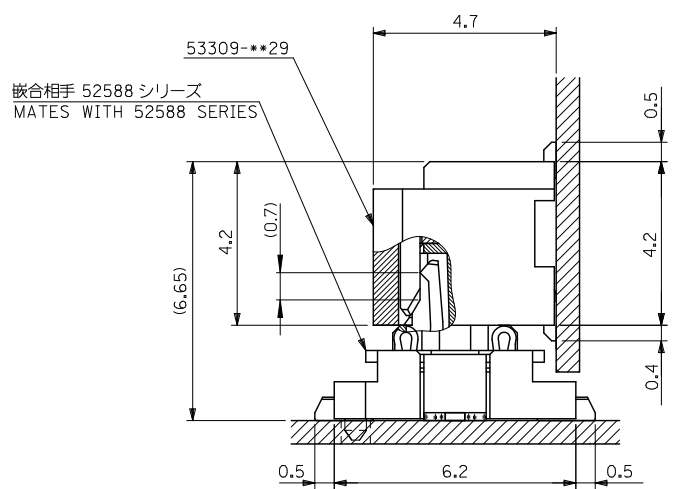
REVISED E.C. NO: J2010-1285 2009/12/17 DRW:YONOD2 CHY:K.S.MARUYAMA 2009/12/17 APPR:SMARUYAMA 2009/12/17	GENERAL TOLERANCES (UNLESS SPECIFIED)		DIMENSION STYLE MM ONLY		SCALE ---	DESIGN UNITS METRIC	THIRD ANGLE PROJECTION
	10 UNDER	±0.2	DRAWN BY M. NINOMIYA	DATE 2004/03/10	TITLE 0.8 B/B CONN.WAFER ASS'Y R/A SMT(WITHOUT BOSS)		
	10 OVER 30 UNDER	±0.25	CHECKED BY K. TOJO	DATE 2004/03/10	MATERIAL NO. 53309-1029		
	30 OVER	±0.3	APPROVED BY M. SASAO	DATE 2004/03/10	DOCUMENT NO. SD-53309-011		
ANGULAR ±3°		DRAFT WHERE APPLICABLE MUST REMAIN WITHIN DIMENSIONS		SEE TABLE		SHEET NO. 1 OF 2	
SIZE A3				THIS DRAWING CONTAINS INFORMATION THAT IS PROPRIETARY TO MOLEX INCORPORATED AND SHOULD NOT BE USED WITHOUT WRITTEN PERMISSION			

10 9 8 7 6 5 4 3 2 1



53309-***29
 嵌合相手 52465シリーズ
 MATES WITH 52465 SERIES

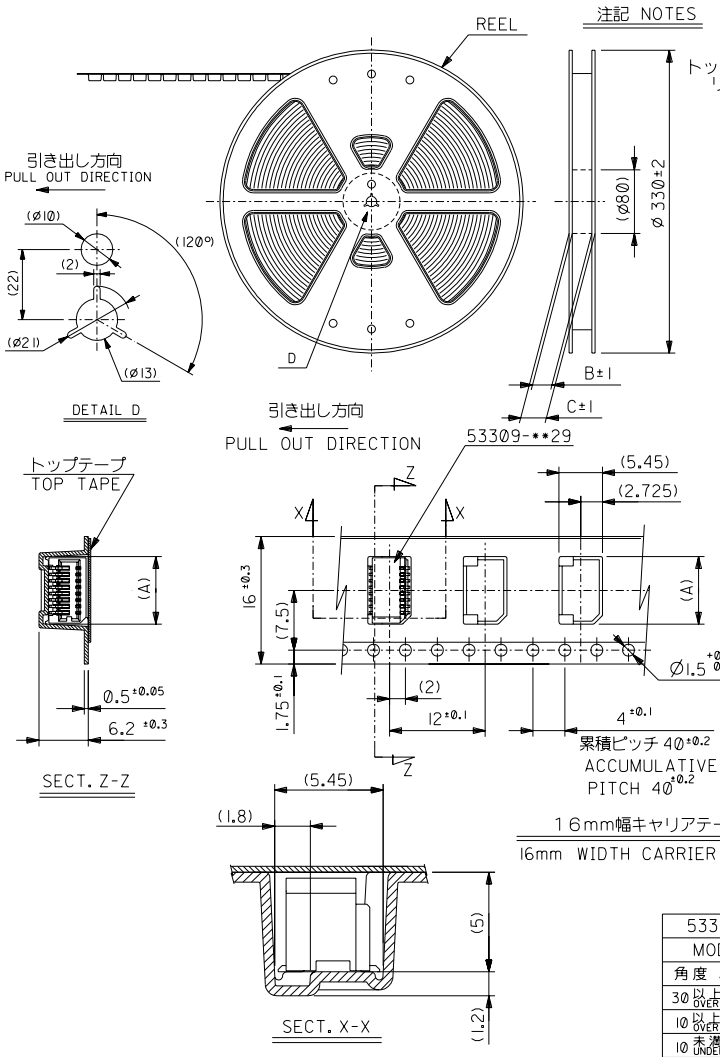
嵌合状態図 (参考)
 MATED DRAWING(REF.)



53309-***29
 嵌合相手 52588シリーズ
 MATES WITH 52588 SERIES

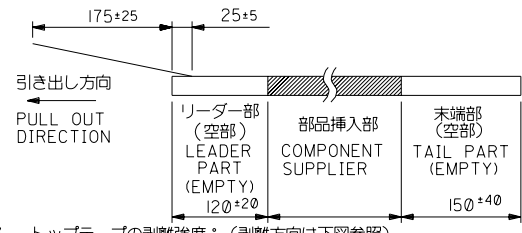
嵌合状態図 (参考)
 MATED DRAWING(REF.)

REVISED EC NO: J2010-1285 DRAWN: YONODZ CHKD: SMARYAMA APPR: SMARYAMA 2009/12/17 2009/12/17 2009/12/17	GENERAL TOLERANCES (UNLESS SPECIFIED)		DIMENSION STYLE MM ONLY	SCALE ---	DESIGN UNITS METRIC	THIRD ANGLE PROJECTION
	10 UNDER	±0.2	DRAWN BY M. NINOMIYA	DATE 2004/03/10	TITLE 0.8 B/B CONN. WAFER ASS'Y R/A SMT(WITHOUT BOSS)	
	10 OVER 30 UNDER	±0.25	CHECKED BY K. TOJO	DATE 2004/03/10	APPROVED BY M. SASAO	
	30 OVER	±0.3	DATE 2004/03/10	MATERIAL NO. SEE SHEET 1		DOCUMENT NO. SD-53309-011
	ANGULAR ±3°		DRAFT WHERE APPLICABLE MUST REMAIN WITHIN DIMENSIONS		SHEET NO. 2 OF 2	
SIZE A3			THIS DRAWING CONTAINS INFORMATION THAT IS PROPRIETARY TO MOLEX INCORPORATED AND SHOULD NOT BE USED WITHOUT WRITTEN PERMISSION			



注記 NOTES

- 1. 梱包数量：1000個/リール NUMBER OF CONNECTORS:1000PCS/REEL
- 2. リードテープ長さ LEAD TAPE LENGTH
- トップテープ TOP TAPE
- リーダー部 LEADER PART
- 部品挿入部 COMPONENT SUPPLIER
- 未接着部 NON-BONDED PART
- 末端部 (空部) TAIL PART (EMPTY)



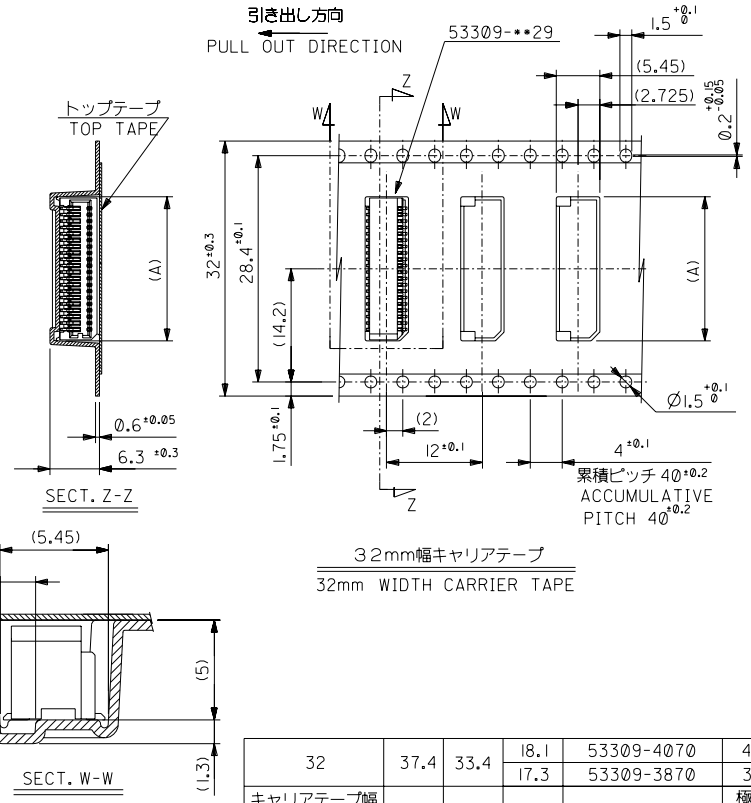
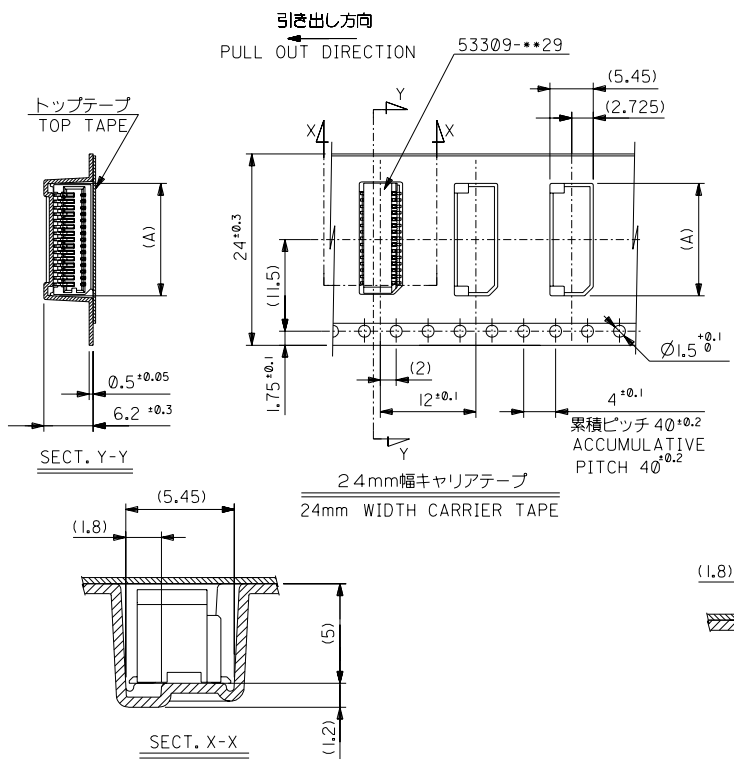
- 3. トップテープの剥離強度：(剥離方向は下図参照)
- 0. 1N~1.3N(10gf~130gf)尚、本規格値は、出荷時に適用。
- (但し、輸送時に剥離が発生しない事。)
- PEELING OFF FORCE OF TOP TAPE
- 0.1N~1.3N(10gf~130gf) (PEELING DIRECTION AS SHOWN IN FOLLOWING FIG.)
- THIS REQUIREMENT SHOULD BE APPLIED AT SHIPMENT
- PEEL OFF SHOULD NOT BE ALLOWED, DURING TRANSPORTATION
- 10°
- 剥離方向 PEEL OFF DIRECTION

- 4. 材料
- キャリアテープ：ポリプロピレン (PP)
- トップテープ：PET, PE, PEF
- リール：ポリスチレン (PS)
- <リサイクル材を含む>
- MATERIAL
- CARRIER TAPE:POLYPROPYLENE
- TOP TAPE:PET,PE,PEF
- REEL:POLYSTYRENE(PS)
- <RECYCLE MATERIAL CONTAINED>
- 5. 本製品は 53309-***91 の鉛フリー品である。
- THIS PRODUCT IS LEAD FREE OF 53309-***91.

16	21.4	17.4	9.3	53309-1870	18
			8.5	53309-1670	16
			7.7	53309-1470	14
			6.9	53309-1270	12
			6.1	53309-1070	10
キャリアテープ幅 CARRIER TAPE WIDTH			C	B	(A)
			MATERIAL NO.		極数 CIRCUIT

53309-***70				材料 MATERIAL		注記参照 SEE NOTES		molex MOLEX-JAPAN CO.,LTD. 日本モレックス株式会社	
MODEL NO.				仕上げ FINISH		—		REVISE ONLY ON CAD SYSTEM	
角度 ANGLE				適用電線範囲 WIRE RANGE		—		TITLE 名称	
30°以上 OVER				10°以上 30°未満 UNDER		—		0.8 BtB Conn Wafer Assy RA SMT Without Boss Embstp Pkg -LEAD FREE-	
10°未満 UNDER				新規作成 (L2004-2995) RELEASED		DRAWN BY:04/03/10 M.NINOMIYA		DWG. NO. (SHEET 1 OF 2) REV	
一般公差 GENERAL TOLERANCES				記号 LTR		04/03/10		SD-53309-012S01	
				承認内容		CHK'D BY:04/03/10 K.TOJO		0	
				DR / CHK		DATE		尺 度 SCALE	
						M.SASAO		—	

THIS DRAWING CONTAINS INFORMATION THAT IS PROPRIETARY TO MOLEX/JAPAN AND SHOULD NOT BE USED WITHOUT WRITTEN PERMISSION
本図面は日本モレックス (株) の所有する権利を含むもので 当社の許可なく複製を禁止する。 EN-01C(032)MXJ-32



24	29.4	25.4	16.5	53309-3670	36
			15.7	53309-3470	34
			14.9	53309-3270	32
			14.1	53309-3070	30
			13.3	53309-2870	28
			12.5	53309-2670	26
			11.7	53309-2470	24
			10.9	53309-2270	22
			10.1	53309-2070	20
キャリアテープ幅 CARRIER TAPE WIDTH	C	B	(A)	MATERIAL NO.	極数 CIRCUIT

32	37.4	33.4	18.1	53309-4070	40
キャリアテープ幅 CARRIER TAPE WIDTH	C	B	(A)	MATERIAL NO.	極数 CIRCUIT
53309-**-70			MATERIAL SHEET 1 OF 2 参照 REFER TO SHEET 1 OF 2		
MODEL NO.	M.NINOMIYA		MATERIAL SHEET 1 OF 2 参照 REFER TO SHEET 1 OF 2		
角度 ANGLE	30°以上 OVER		適用電線範囲 WIRE RANGE		
30°以上 OVER	10°以下 30°未満 UNDER		被覆外径 INS. RANGE		
10°以下 30°未満 UNDER	新規作成 (2004-2995) RELEASED		DRAWN BY: 04/03/10 M.SASAO		
0	記号内書 REVISION RECORD		CHK'D BY: 04/03/10 K.TOJO		
0	一般公差 GENERAL TOLERANCES		尺度 SCALE		
THIS DRAWING CONTAINS INFORMATION THAT IS PROPRIETARY TO MOLEX/JAPAN AND SHOULD NOT BE USED WITHOUT WRITTEN PERMISSION 本図面は日本モレックス(株)の所有する情報を含むもので 当社の許可なく複製を禁止する。			DWG. NO. (SHEET 2 OF 2) REV 0		