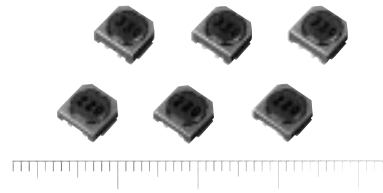


### SMD Choke Coils

Series: **H**  
 Type: **ELL6RH**  
**ELL6SH**  
**ELL6UH**



Type ELL6RH/6SH/6UH

#### ■ Features

- Thin (height 2.5 mm, 3.0 mm)
- Higher reliability in mounting by separating the user terminal and internal connection.
- Large current capability

#### ■ Recommended Applications

- Video, Audio, Mobile communications, Electric battery driven equipment
- As a decoupling choke coil in DC-DC converters

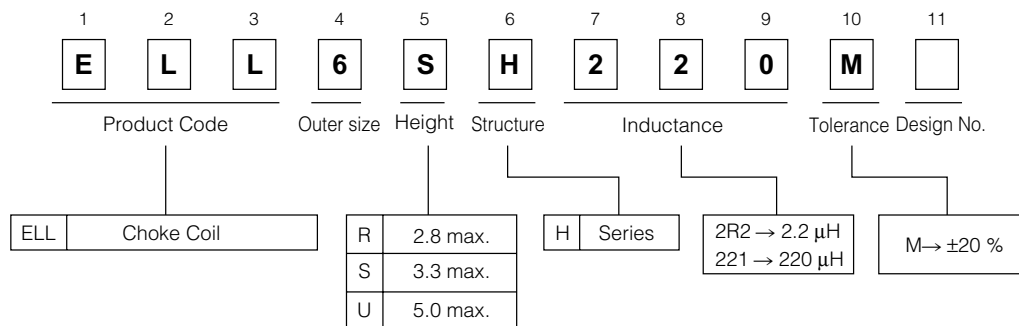
#### ■ Cautionary Notes Regarding Usage in DC-DC converters

- Maximum Dissipation of 1 W.
- Maximum case temperature of 105 °C (Ambient & self-heating temperature)

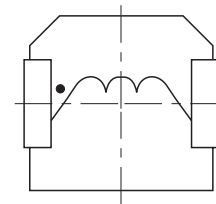
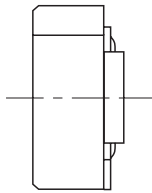
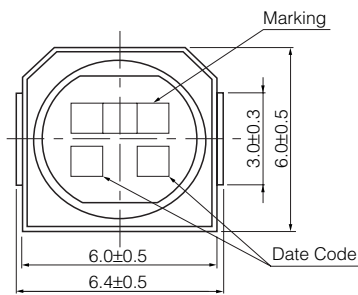
#### ■ Standard Packing Quantity

- 1000 pcs./Reel

#### ■ Explanation of Part Numbers

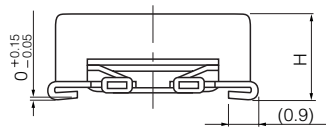


### ■ Dimensions in mm (not to scale)

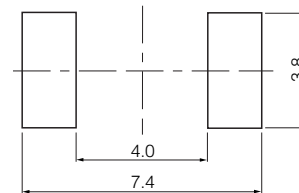


### ■ Connections (Top view)

### ■ Recommended Land Pattern in mm (not to scale)



| Type   | H             |
|--------|---------------|
| ELL6RH | 2.5 mm±0.3 mm |
| ELL6SH | 3.0 mm±0.3 mm |
| ELL6UH | 5.0 mm max.   |



### ■ Standard Parts

| Part No.   | Inductance (μH)<br>at 100 kHz<br>Tol. ±20 % | R <sub>DC</sub> (mΩ)<br>at 20 °C<br>Tol. ±20 % |      | * Rated<br>Current<br>(mA) max. |      | Marking |
|------------|---|--|------|---------------------------------|------|---------|
|            |   | 6RH  | 6SH  | 6RH                             | 6SH  |         |
| ELL6□H1R0M | 1.0   | 19   | 19   | 3000                            | 3400 | 1R0     |
| ELL6□H1R5M | 1.5   | 24   | 24   | 2400                            | 3200 | 1R5     |
| ELL6□H2R7M | 2.7   | 39   | 31   | 1800                            | 2400 | 2R7     |
| ELL6□H3R3M | 3.3   | 44   | 34   | 1600                            | 2200 | 3R3     |
| ELL6□H4R7M | 4.7   | 49   | 42   | 1580                            | 2000 | 4R7     |
| ELL6□H5R1M | 5.1   | 56   | —    | 1550                            | —    | 5R1     |
| ELL6□H5R6M | 5.6   | —  | 49   | —                               | 1800 | 5R6     |
| ELL6□H6R2M | 6.2   | 62   | —    | 1400                            | —    | 6R2     |
| ELL6□H6R8M | 6.8   | —  | 52   | —                               | 1500 | 6R8     |
| ELL6□H7R5M | 7.5   | 80   | —    | 1250                            | —    | 7R5     |
| ELL6□H8R2M | 8.2   | 87   | 61   | 1200                            | 1400 | 8R2     |
| ELL6□H100M | 10.0  | 95   | 65   | 1100                            | 1300 | 100     |
| ELL6□H120M | 12.0  | 130  | 71   | 1000                            | 1200 | 120     |
| ELL6□H150M | 15.0  | 150  | 96   | 850                             | 1100 | 150     |
| ELL6□H180M | 18.0  | 170  | 130  | 800                             | 1000 | 180     |
| ELL6□H220M | 22.0  | 220  | 140  | 700                             | 900  | 220     |
| ELL6□H270M | 27.0  | 260  | 160  | 650                             | 800  | 270     |
| ELL6□H330M | 33.0  | 380  | 180  | 600                             | 700  | 330     |
| ELL6□H390M | 39.0  | 410  | 240  | 550                             | 650  | 390     |
| ELL6□H470M | 47.0  | 480  | 270  | 500                             | 600  | 470     |
| ELL6□H560M | 56.0  | 540  | 290  | 450                             | 550  | 560     |
| ELL6□H680M | 68.0  | 770  | 520  | 400                             | 500  | 680     |
| ELL6□H820M | 82.0  | 870  | 600  | 350                             | 450  | 820     |
| ELL6□H101M | 100.0                                       | 1000   | 680  | 300                             | 400  | 101     |
| ELL6□H121M | 120.0                                       | 1500   | 750  | 280                             | 370  | 121     |
| ELL6□H151M | 150.0                                       | 1800   | 860  | 250                             | 350  | 151     |
| ELL6□H181M | 180.0                                       | 2000   | 1300 | 230                             | 300  | 181     |

\* Current: This indicates the value of current when the inductance is 80% of nominal value or when the case temperature has risen 45 °C.

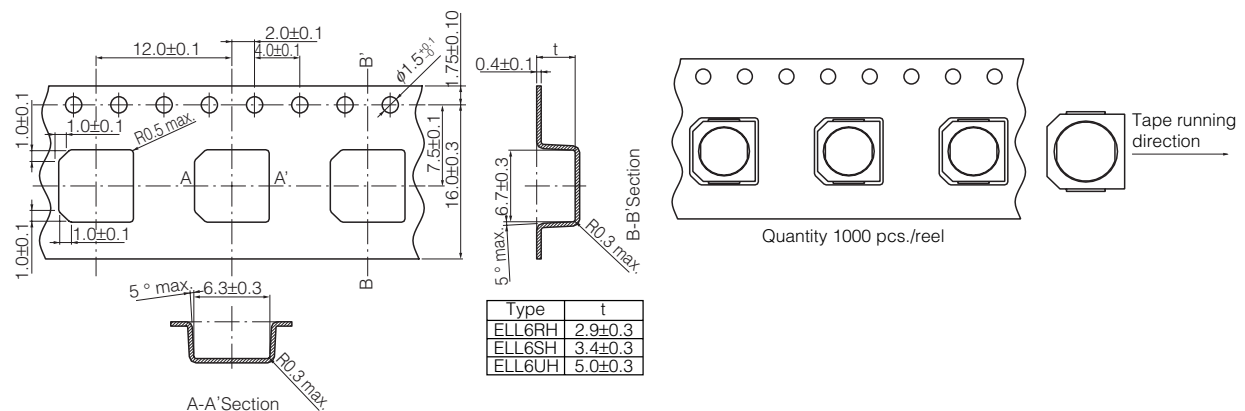
Design and specifications are each subject to change without notice. Ask factory for the current technical specifications before purchase and/or use. Should a safety concern arise regarding this product, please be sure to contact us immediately.

### Standard Parts

| Part No.   | Inductance ( $\mu\text{H}$ )<br>at 100 kHz<br>Tolerance $\pm 20\%$ | $R_{DC}$ ( $m\Omega$ )<br>at 20 °C<br>Tolerance $\pm 20\%$ | * Rated Current<br>(mA) max. | Marking |
|------------|--|--|------------------------------|---------|
| ELL6UH100M | 10.0   | 63   | 1800                         | 100     |
| ELL6UH120M | 12.0   | 71   | 1700                         | 120     |
| ELL6UH150M | 15.0   | 79   | 1600                         | 150     |
| ELL6UH180M | 18.0   | 88   | 1400                         | 180     |
| ELL6UH220M | 22.0   | 98   | 1300                         | 220     |
| ELL6UH270M | 27.0   | 110  | 1200                         | 270     |
| ELL6UH330M | 33.0   | 130  | 1100                         | 330     |
| ELL6UH390M | 39.0   | 150  | 1000                         | 390     |
| ELL6UH470M | 47.0   | 160  | 900                          | 470     |
| ELL6UH560M | 56.0   | 210  | 800                          | 560     |
| ELL6UH680M | 68.0   | 230  | 700                          | 680     |
| ELL6UH820M | 82.0   | 260  | 650                          | 820     |
| ELL6UH101M | 100.0  | 360  | 600                          | 101     |
| ELL6UH121M | 120.0  | 480  | 580                          | 121     |
| ELL6UH151M | 150.0  | 680  | 500                          | 151     |
| ELL6UH181M | 180.0  | 750  | 470                          | 181     |
| ELL6UH221M | 220.0  | 840  | 410                          | 221     |
| ELL6UH271M | 270.0  | 1200   | 370                          | 271     |
| ELL6UH331M | 330.0  | 1360   | 330                          | 331     |
| ELL6UH391M | 390.0  | 1500   | 300                          | 391     |
| ELL6UH471M | 470.0  | 1680   | 270                          | 471     |
| ELL6UH561M | 560.0  | 2530   | 260                          | 561     |
| ELL6UH681M | 680.0  | 2830   | 240                          | 681     |
| ELL6UH821M | 820.0  | 3140   | 200                          | 821     |
| ELL6UH102M | 1000.0   | 3670   | 180                          | 102     |

\* Current: This indicates the value of current when the inductance is 70% of nominal value or when the case temperature has risen 45 °C.

### Embossed Carrier Tape Dimensions in mm (not to scale)



Design and specifications are each subject to change without notice. Ask factory for the current technical specifications before purchase and/or use. Should a safety concern arise regarding this product, please be sure to contact us immediately.

Feb. 2009