

Alchip™-MKB Series

- Low ESR
- Endurance : 3,000 hours at 105°C
- Rated voltage 400V, Capacitance 2.2 to 4.7μF
- RoHS Compliant

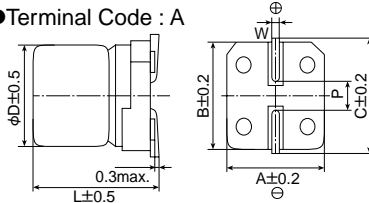


◆ SPECIFICATIONS

Items	Characteristics	
Category		
Temperature Range	-40 to +105°C	
Rated Voltage Range	400V _{dc}	
Capacitance Tolerance	±20%(M) (20°C, 120Hz)	
Leakage Current	I=0.04CV+100(max.) Where, I : Max. leakage current (μA), C : Nominal capacitance (μF), V : Rated voltage (V) (at 20°C after 1 minute)	
Dissipation Factor (tanδ)	Rated voltage(V _{dc}) 400V	(20°C, 120Hz)
	tanδ (Max.) 0.25	
Low Temperature Characteristics (Max. impedance Ratio)	Rated voltage(V _{dc}) 400V	(120Hz)
	Z(-25°C)/Z(+20°C) 6	
	Z(-40°C)/Z(+20°C) 10	
Endurance	The following specifications shall be satisfied when the capacitors are restored to 20°C after the rated voltage is applied for 3,000 hours at 105°C.	
	Capacitance change	≤±20% of the initial value
	D.F. (tanδ)	≤200% of the initial specified value
	Leakage current	≤The initial specified value
Shelf life	The following specifications shall be satisfied when the capacitors are restored to 20°C after exposing them for 500 hours at 105°C without voltage applied. Before the measurement, the capacitor shall be preconditioned by applying voltage according to Item 4.1 of JIS C 5101-4.	
	Capacitance change	≤±20% of the initial value
	D.F. (tanδ)	≤200% of the initial specified value
	Leakage current	≤The initial specified value

◆ DIMENSIONS [mm]

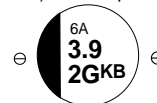
- Terminal Code : A



Size code	D	L	A	B	C	W	P
HA0	8	10.0	8.3	8.3	9.0	0.7 to 1.1	3.1
JA0	10	10.0	10.3	10.3	11.0	0.7 to 1.1	4.5

◆ MARKING

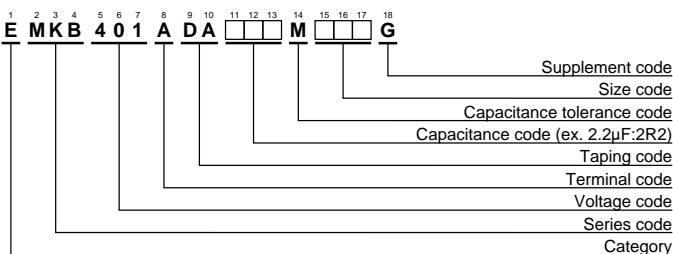
EX) 400V3.9μF



- Rated voltage symbol

Rated voltage (V _{dc})	Symbol
400	2G

◆ PART NUMBERING SYSTEM



Please refer to "Product code guide (surface mount type)"

◆ STANDARD RATINGS

WV (V _{dc})	Cap (μF)	Size code	ESR (Ωmax/120Hz)		Rated ripple current (mA _{rms} /105°C, 120Hz)	Part No.
			20°C	-40°C		
400	2.2	HA0	20	1,000	26	EMKB401ADA2R2MHA0G
	3.3	JA0	10	500	37	EMKB401ADA3R3MJA0G
	3.9	JA0	10	500	38	EMKB401ADA3R9MJA0G
	4.7	JA0	10	500	39	EMKB401ADA4R7MJA0G