

PLEASE CHECK WWW.MOLEX.COM FOR LATEST PART INFORMATION

Part Number: [0359650200](#)
Status: **Active**
Description: 1.78mm (.070") Tab Multiple Wire-to-Wire Female Housing, 2 Circuits, Vertical, A-Type

Documents:

[Drawing \(PDF\)](#) [RoHS Certificate of Compliance \(PDF\)](#)
[Product Specification PS-35180-002 \(PDF\)](#)

Agency Certification

UL E29179

General

Product Family Crimp Housings
 Series [35965](#)
 Product Name N/A

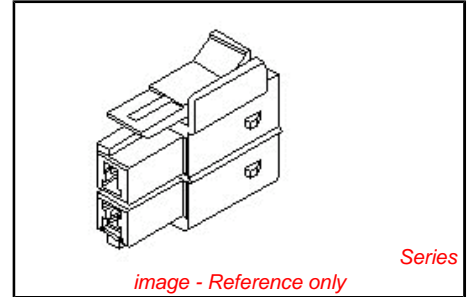
Physical

Circuits (maximum) 2
 Gender Female
 Glow-Wire Compliant No
 Number of Rows 2
 Packaging Type Bag
 Panel Mount No
 Pitch - Mating Interface (in) 0.315 In
 Pitch - Mating Interface (mm) 8.00 mm
 Stackable No
 Temperature Range - Operating -40°C to +120°C

Material Info

Reference - Drawing Numbers

Product Specification PS-35180-002
 Sales Drawing SD-35965-020*



EU RoHS

ELV and RoHS Compliant

REACH SVHC

Not Reviewed

Halogen-Free

Status

Not Reviewed

Need more information on product environmental compliance?

Email productcompliance@molex.com
 For a multiple part number RoHS Certificate of Compliance, [click here](#)

Please visit the [Contact Us](#) section for any non-product compliance questions.

China RoHS



Search Parts in this Series

[35965Series](#)

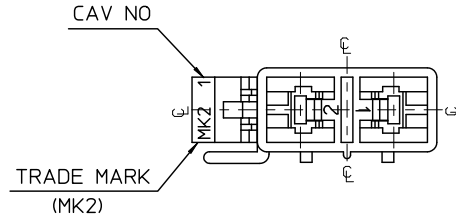
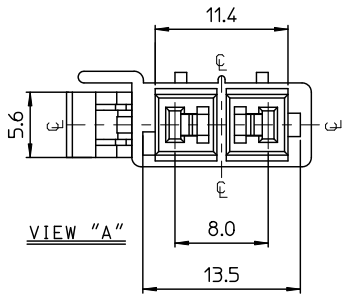
Mates With

[35180](#)

Use With

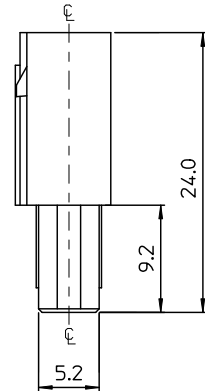
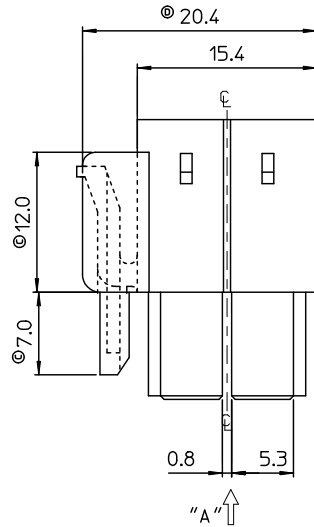
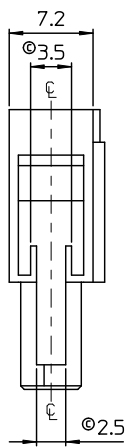
[35746](#)

PLEASE CHECK WWW.MOLEX.COM FOR LATEST PART INFORMATION



NOTES.

1. MATERIAL & COLOR : SEE TABLE
2. MATED HOUSING : 35180-040*
35180-060*
3. APPLICABLE TERMINAL : 35746-0*10
4. APPLICABLE T.P.A : 35965-029*
5. PRODUCT SPECIFICATION : PS-35180-002



| NO. | POLYESTER(PBT) | | PC/PET(UL94V-0) | |
|-----|----------------|---------|-----------------|---------|
| | MATERIAL | COLOR | MATERIAL | COLOR |
| 1 | 35965-0200 | NATURAL | 35965-9200 | NATURAL |
| 2 | 35965-0202 | RED | 35965-9202 | RED |
| 3 | 35965-0203 | BLUE | 35965-9203 | YELLOW |
| 4 | 35965-0204 | BLUE | 35965-9204 | BLUE |

| | | |
|---------|---------------------|------------|
| REVISED | EC NO: KOR2010-0186 | 2010/05/17 |
| DRAWN | JHPARK01 | 2010/05/17 |
| CHKD | SJCHU | 2010/05/18 |
| APPR | YUNJIK IM | 2010/05/18 |

| | |
|-----------------|-----|
| QUALITY SYMBOLS | ▽=0 |
| | ▽=0 |

| GENERAL TOLERANCES (UNLESS SPECIFIED) | |
|--|-------|
| | mm |
| 4 PLACES | ± 0.3 |
| 3 PLACES | ± 0.4 |
| 2 PLACES | ± 0.5 |
| 1 PLACE | ± 0.6 |
| ANGULAR ± 1 ° | |
| DRAFT WHERE APPLICABLE MUST REMAIN WITHIN DIMENSIONS | |

| DIMENSION STYLE | |
|-----------------|------------|
| MM ONLY | |
| DRAWN BY | DATE |
| JS.KANG | 1995/09/28 |
| CHECKED BY | DATE |
| BK.CHOI | 1995/09/28 |
| APPROVED BY | DATE |
| CW.LEE | 1995/09/28 |
| MATERIAL NO. | SEE TABLE |

| | | | | |
|---|-----------|--------------|---------------|------------------------|
| SCALE | 3:1 | DESIGN UNITS | METRIC | THIRD ANGLE PROJECTION |
| TITLE | | | | |
| 070 MULTI FEMALE HSG 2P(A) | | | | |
| MOLEX INCORPORATED | | | | |
| MATERIAL NO. | SEE TABLE | DOCUMENT NO. | SD-35965-020* | SHEET NO. |
| | | | | 1 OF 01 |
| THIS DRAWING CONTAINS INFORMATION THAT IS PROPRIETARY TO MOLEX INCORPORATED AND SHOULD NOT BE USED WITHOUT WRITTEN PERMISSION | | | | |