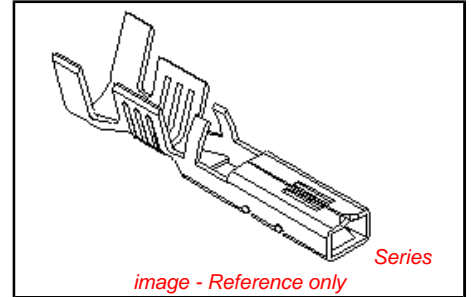


PLEASE CHECK WWW.MOLEX.COM FOR LATEST PART INFORMATION

Part Number: [0357480110](#)
Status: **Active**
Overview: [versablade](#)
Description: Crimp Terminal 35748, 20-22 AWG

Documents:

| | |
|--|--|
| Drawing (PDF) | Product Specification PS-35180-003 (PDF) |
| Product Specification PS-35150-001 (PDF) | Product Specification PS-35182-003 (PDF) |
| Product Specification PS-35150-003 (PDF) | Product Specification PS-35524-001 (PDF) |
| Product Specification PS-35180-002 (PDF) | RoHS Certificate of Compliance (PDF) |



General

| | |
|-------------------------|----------------------------|
| Product Family | Crimp Terminals |
| Series | 35748 |
| Crimp Quality Equipment | Yes |
| Overview | versablade |
| Product Name | VersaBlade™ |

Physical

| | |
|--------------------------------|----------------------|
| Gender | Female |
| Material - Metal | Phosphor Bronze |
| Material - Plating Mating | Tin |
| Material - Plating Termination | Tin |
| Packaging Type | Reel |
| Plating min: Mating (µin) | 32.00 |
| Plating min: Mating (µm) | 0.800 |
| Plating min: Termination (µin) | 32.00 |
| Plating min: Termination (µm) | 0.80 |
| Termination Interface: Style | Crimp or Compression |
| Wire Insulation Diameter | 2.70mm (.106") max. |
| Wire Size AWG | 20, 22 |
| Wire Size mm² | N/A |

Material Info

Reference - Drawing Numbers

| | |
|-----------------------|---|
| Product Specification | PS-35150-001, PS-35150-003, PS-35180-002, PS-35180-003, PS-35182-003, PS-35524-001 |
| Sales Drawing | SD-35748-001 |

| | |
|--|--------------------------|
| <p>EU RoHS ELV and RoHS Compliant REACH SVHC Contains SVHC: No Halogen-Free Status Halogen-Free</p> | <p>China RoHS</p> |
|--|--------------------------|

Need more information on product environmental compliance?

Email productcompliance@molex.com
 For a multiple part number RoHS Certificate of Compliance, [click here](#)

Please visit the [Contact Us](#) section for any non-product compliance questions.

Search Parts in this Series
[35748Series](#)

Application Tooling | FAQ

Tooling specifications and manuals are found by selecting the products below. Crimp Height Specifications are then contained in the Application Tooling Specification document.

Global

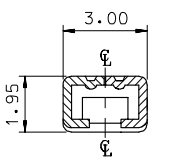
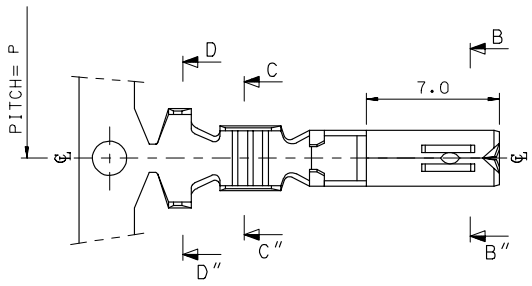
| Description | Product # |
|-------------------|----------------------------|
| T2 Terminator Die | 0638529000 |
| FineAdjust™ | 0638629000 |
| Applicator | |

PLEASE CHECK WWW.MOLEX.COM FOR LATEST PART INFORMATION

10 9 8 7 6 5 4 3 2 1

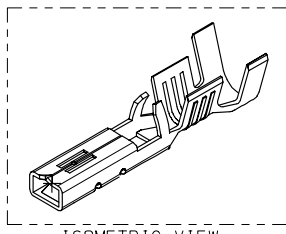
F
E
D
C
B
A

F
E
D
C
B
A

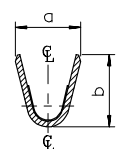
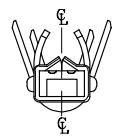
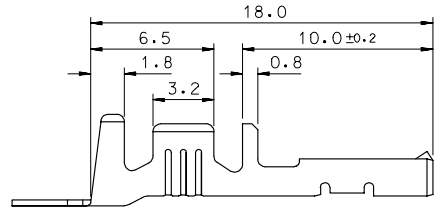


SEC' : B-B''

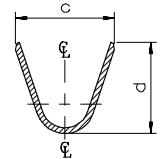
- NOTES
1. MATERIAL : PHOSPHOR BRONZE
0.3mm THICKNESS
 2. FINISH : PRE-PLATED TIN
 3. RECOMMENDED LENGTH OF WIRE STRIP IS 4.0-4.8mm.



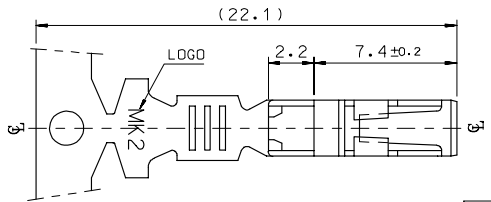
ISOMETRIC VIEW



SEC' : C-C''



SEC' : D-D''



| MATERIAL NO | ENG. No. | AWG | a | b | c | d | P |
|-------------|------------|---------|------|------|------|-----|------|
| 357480210 | 35748-0210 | #18-#14 | 3.4 | 3.8 | 5.2 | 4.8 | 12.0 |
| 357480110 | 35748-0110 | #22-#20 | 2.85 | 2.8 | 4.2 | 4.0 | 10.6 |
| 357480410 | 35748-0410 | #24 | 2.2 | 1.75 | 3.85 | 3.5 | 10.6 |

| | | | | | | |
|---|-----------------|---|--|-------|---|--|
| REVISED E.C. NO.: KOR2008-0087 T.DRWN: JHPARK01 2007/11/15 CHIKHWY YANG 2007/11/15 APPR: TUNSIKIM 2007/11/15 DESCRIPTION | QUALITY SYMBOLS | GENERAL TOLERANCES (UNLESS SPECIFIED) | DIMENSION STYLE | SCALE | DESIGN UNITS | THIRD ANGLE PROJECTION |
| | ▽=0 ▽=0 | mm INCH 4 PLACES ± --- ± --- 3 PLACES ± --- ± --- 2 PLACES ± 0.3 ± --- 1 PLACE ± 0.3 ± --- ANGULAR ± 1 ° | MM ONLY | 1:1 | METRIC | DRAWN BY BK.CHOI DATE 1992/11/17 CHECKED BY BK.CHOI DATE 1992/11/17 APPROVED BY CW.LEE DATE 1992/11/17 |
| DRAFT WHERE APPLICABLE MUST REMAIN WITHIN DIMENSIONS | | SEE TABLE | TITLE .070 FEMALE TERMINAL (B-TYPE) MATERIAL NO. SD-35748-001 DOCUMENT NO. | | MOLEX INCORPORATED SHEET NO. 1 OF 01 | |
| | | THIS DRAWING CONTAINS INFORMATION THAT IS PROPRIETARY TO MOLEX INCORPORATED AND SHOULD NOT BE USED WITHOUT WRITTEN PERMISSION | | | | |

9 8 7 6 5 4 3 2 1