

PLEASE CHECK WWW.MOLEX.COM FOR LATEST PART INFORMATION

Part Number: [0357470210](#)
Status: **Active**
Overview: [versablade](#)
Description: Crimp Terminal 35747, 16-18 AWG

Documents:

Drawing (PDF)	Product Specification PS-35182-003 (PDF)
Product Specification PS-35150-001 (PDF)	Product Specification PS-35524-001 (PDF)
Product Specification PS-35180-002 (PDF)	RoHS Certificate of Compliance (PDF)

General

Product Family	Crimp Terminals
Series	35747
Crimp Quality Equipment	Yes
Overview	versablade
Product Name	VersaBlade™

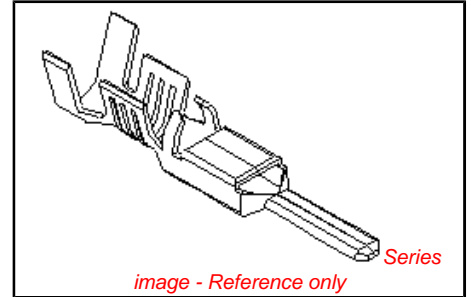
Physical

Gender	Male
Material - Metal	Brass
Material - Plating Mating	Tin
Material - Plating Termination	Tin
Packaging Type	Reel
Plating min: Mating (µin)	32.00
Plating min: Mating (µm)	0.800
Plating min: Termination (µin)	32.00
Plating min: Termination (µm)	0.80
Termination Interface: Style	Crimp or Compression
Wire Insulation Diameter	3.40mm (.134") max.
Wire Size AWG	16, 18
Wire Size mm²	N/A

Material Info

Reference - Drawing Numbers

Product Specification	PS-35150-001, PS-35180-002, PS-35182-003, PS-35524-001
Sales Drawing	SD-35747-001



EU RoHS

ELV and RoHS Compliant
REACH SVHC Contains SVHC: No
Halogen-Free Status
Halogen-Free

China RoHS



Need more information on product environmental compliance?

Email productcompliance@molex.com
 For a multiple part number RoHS Certificate of Compliance, [click here](#)

Please visit the [Contact Us](#) section for any non-product compliance questions.

Search Parts in this Series

[35747Series](#)

Application Tooling | FAQ

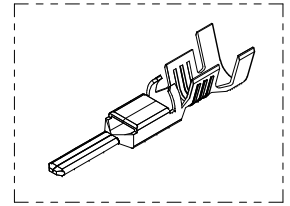
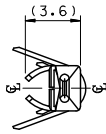
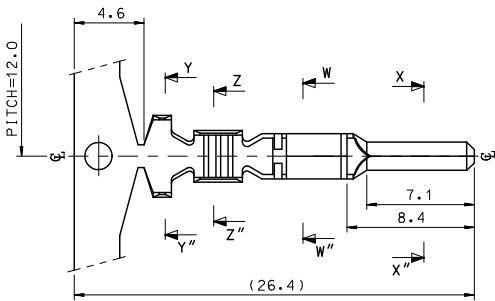
Tooling specifications and manuals are found by selecting the products below. Crimp Height Specifications are then contained in the Application Tooling Specification document.

Global

Description	Product #
T2 Terminator Die	0638529100
FineAdjust™	0638629100
Applicator	

PLEASE CHECK WWW.MOLEX.COM FOR LATEST PART INFORMATION

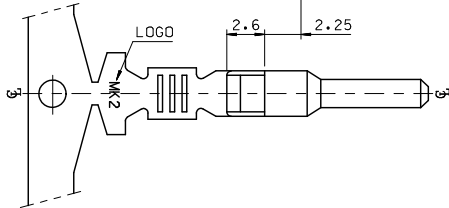
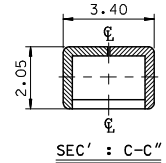
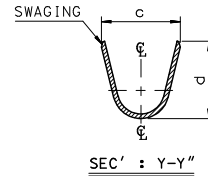
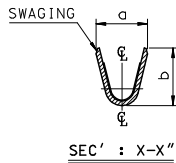
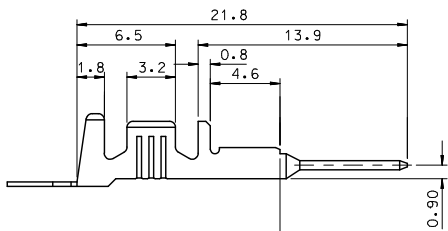
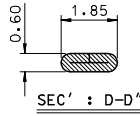
10 9 8 7 6 5 4 3 2 1



ISOMETRIC VIEW

NOTES.

1. MATERIAL : C BRASS, PRE-TIN PLATED
2. FINISH : 0.8~1.8 μm , Tin(Sn) plating overall
0.3~0.8 μm , Copper(Cu) plating
3. PRODUCT SPECIFICATION : PS-35150-001, PS-35180-002
PS-35180-003, PS-35524-001
4. CRIMPING SPECIFICATION : CS-35745-001
5. RECOMMENDED LENGTH OF WIRE STRIP IS 4.0~4.8mm



MATERIAL NO	ENG. No.	AWG	a	b	c	d	PITCH "P"
357470210	35747-0210	#18-#14	3.4	3.8	5.2	4.8	12.0
357470110	35747-0110	#22-#20	2.85	2.8	4.2	4.0	10.6
357470410	35747-0410	#24	2.2	1.75	3.85	3.5	10.6

REVISED E.C. NO.: KOR2009-0151 T.DRAWN: H.PARK01 2009/05/18 C.HYD: 2009/06/18 APPR: YUNSIKIM 2009/07/01 DESCRIPTION REV	QUALITY SYMBOLS $\nabla=0$ $\nabla=0$	GENERAL TOLERANCES (UNLESS SPECIFIED) <table border="1"> <thead> <tr> <th></th> <th>mm</th> <th>INCH</th> </tr> </thead> <tbody> <tr> <td>4 PLACES</td> <td>\pm ---</td> <td>\pm ---</td> </tr> <tr> <td>3 PLACES</td> <td>\pm ---</td> <td>\pm ---</td> </tr> <tr> <td>2 PLACES</td> <td>\pm 0.2</td> <td>\pm ---</td> </tr> <tr> <td>1 PLACE</td> <td>\pm 0.3</td> <td>\pm ---</td> </tr> <tr> <td colspan="2">ANGULAR</td> <td>\pm 1°</td> </tr> </tbody> </table>		mm	INCH	4 PLACES	\pm ---	\pm ---	3 PLACES	\pm ---	\pm ---	2 PLACES	\pm 0.2	\pm ---	1 PLACE	\pm 0.3	\pm ---	ANGULAR		\pm 1°	DIMENSION STYLE MM ONLY DRAWN BY JS.KANG DATE 1998/01/19 CHECKED BY BK.CH01 DATE 1998/01/19 APPROVED BY CW.LEE DATE 1998/01/19	SCALE 4:1 DESIGN UNITS METRIC THIRD ANGLE PROJECTION	TITLE .070 MALE TERMINAL (B-TYPE)
		mm	INCH																				
4 PLACES	\pm ---	\pm ---																					
3 PLACES	\pm ---	\pm ---																					
2 PLACES	\pm 0.2	\pm ---																					
1 PLACE	\pm 0.3	\pm ---																					
ANGULAR		\pm 1°																					
DRAFT WHERE APPLICABLE MUST REMAIN WITHIN DIMENSIONS		MATERIAL NO. SEE TABLE SIZE A3	MOLEX INCORPORATED DOCUMENT NO. SD-35747-001 SHEET NO. 1 OF 01																				

9 8 7 6 5 4 3 2 1