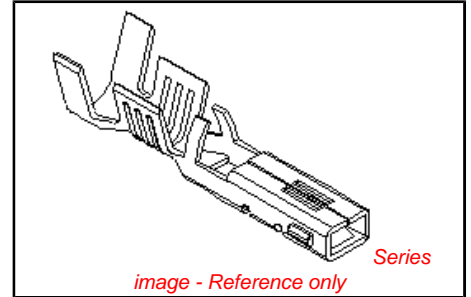


**PLEASE CHECK WWW.MOLEX.COM FOR LATEST PART INFORMATION**

**Part Number:** [0357460110](#)  
**Status:** **Active**  
**Overview:** [versablade](#)  
**Description:** Crimp Terminal 35746, 20-22 AWG

**Documents:**

<a href="#">Drawing (PDF)</a>	<a href="#">Product Specification PS-35182-003 (PDF)</a>
<a href="#">Product Specification PS-35150-001 (PDF)</a>	<a href="#">Product Specification PS-35524-001 (PDF)</a>
<a href="#">Product Specification PS-35180-002 (PDF)</a>	<a href="#">RoHS Certificate of Compliance (PDF)</a>
<a href="#">Product Specification PS-35180-003 (PDF)</a>	



**General**

Product Family	Crimp Terminals
Series	35746
Crimp Quality Equipment	Yes
Overview	<a href="#">versablade</a>
Product Name	VersaBlade™

**Physical**

Gender	Female
Material - Metal	Phosphor Bronze
Material - Plating Mating	Tin
Material - Plating Termination	Tin
Packaging Type	Reel
Plating min: Mating (µm)	32.00
Plating min: Mating (µm)	0.800
Plating min: Termination (µm)	32.00
Plating min: Termination (µm)	0.80
Termination Interface: Style	Crimp or Compression
Wire Insulation Diameter	2.70mm (.106") max.
Wire Size AWG	20, 22
Wire Size mm²	N/A

**Material Info**

**Reference - Drawing Numbers**

Product Specification	PS-35150-001, PS-35180-002, PS-35180-003, PS-35182-003, PS-35524-001
Sales Drawing	SD-35746-001

<p><b>EU RoHS</b>  <b>ELV and RoHS</b>  <b>Compliant</b>  <b>REACH SVHC</b>  <b>Contains SVHC: No</b>  <b>Halogen-Free</b>  <b>Status</b>  <b>Halogen-Free</b></p>	<p><b>China RoHS</b></p>
--	--------------------------

**Need more information on product environmental compliance?**

Email [productcompliance@molex.com](mailto:productcompliance@molex.com)  
 For a multiple part number RoHS Certificate of Compliance, [click here](#)

Please visit the [Contact Us](#) section for any non-product compliance questions.

**Search Parts in this Series**  
[35746Series](#)

**Application Tooling | FAQ**

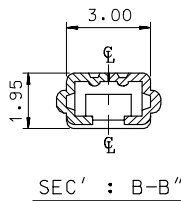
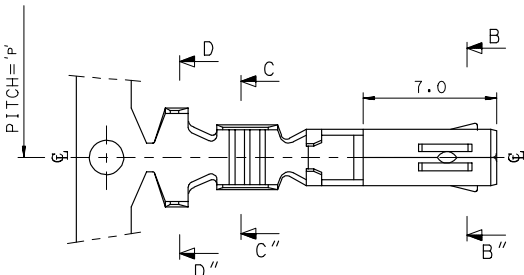
*Tooling specifications and manuals are found by selecting the products below. Crimp Height Specifications are then contained in the Application Tooling Specification document.*

**Global**

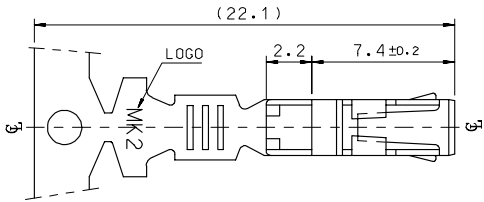
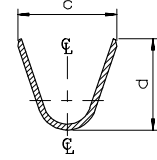
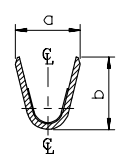
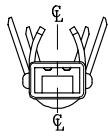
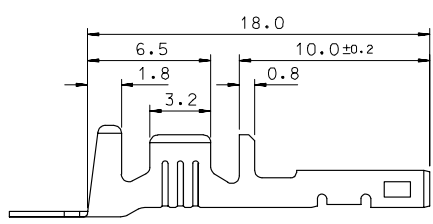
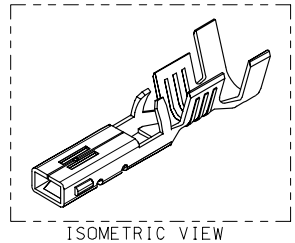
Description	Product #
T2 Terminator Die	<a href="#">0638529000</a>
FineAdjust™	<a href="#">0638629000</a>
Applicator	

**PLEASE CHECK WWW.MOLEX.COM FOR LATEST PART INFORMATION**

10 9 8 7 6 5 4 3 2 1



- NOTES
1. MATERIAL : PHOSPHOR BRONZE  
0.3mm THICKNESS
  2. FINISH : PRE-PLATED TIN
  3. RECOMMENDED LENGTH OF WIRE STRIP IS 4.0-4.8mm.



MATERIAL NO	ENG. No.	AWG	a	b	c	d	PITCH P
357460210	35746-0210	#18-#14	3.4	3.8	5.2	4.8	12.0
357460110	35746-0110	#22-#20	2.85	2.8	4.2	4.0	10.6
357460410	35746-0410	#24	2.2	1.75	3.85	3.5	10.6

REVISED EC NO: KOR2008-0087 TIDRAWN: JHPARK01 2007/11/15 CHIKDHWY YANG 2007/11/15 APPR: TUNSIKIM 2007/11/15 DESCRIPTION	QUALITY SYMBOLS	GENERAL TOLERANCES (UNLESS SPECIFIED)	DIMENSION STYLE	SCALE	DESIGN UNITS	THIRD ANGLE PROJECTION
	▽=0 ▽=0	mm    INCH 4 PLACES ± --- ± --- 3 PLACES ± --- ± --- 2 PLACES ± 0.3 ± --- 1 PLACE ± 0.3 ± --- ANGULAR ± 1 °	MM ONLY	4:1	METRIC	DRAWN BY BK.CHOI DATE 1992/11/17 CHECKED BY BK.CHOI DATE 1992/11/17 APPROVED BY CW.LEE DATE 1992/11/17 MATERIAL NO. SD-35746-001 DOCUMENT NO. SD-35746-001
DRAFT WHERE APPLICABLE MUST REMAIN WITHIN DIMENSIONS		SEE TABLE	TITLE .070 FEMALE TERMINAL (A-TYPE) MOLEX INCORPORATED SHEET NO. 1 OF 01			
THIS DRAWING CONTAINS INFORMATION THAT IS PROPRIETARY TO MOLEX INCORPORATED AND SHOULD NOT BE USED WITHOUT WRITTEN PERMISSION						

9 8 7 6 5 4 3 2 1