

**PLEASE CHECK WWW.MOLEX.COM FOR LATEST PART INFORMATION**

**Part Number:** [0357450410](#)  
**Status:** **Active**  
**Overview:** [versablade](#)  
**Description:** Tab Crimp Terminal 35745, Male, 24-26 AWG , (0.20 - 0.12mm<sup>2</sup>), Brass, Pre-Tin Plated, Reel

**Documents:**

[Drawing \(PDF\)](#) [RoHS Certificate of Compliance \(PDF\)](#)  
[Product Specification PS-35180-003 \(PDF\)](#)

**General**

Product Family	Crimp Terminals
Series	<a href="#">35745</a>
Crimp Quality Equipment	Yes
Overview	<a href="#">versablade</a>
Product Name	VersaBlade™

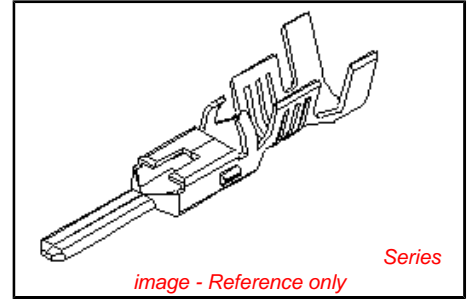
**Physical**

Gender	Male
Material - Metal	Brass
Material - Plating Mating	Tin
Material - Plating Termination	Tin
Packaging Type	Reel
Plating min: Mating (µin)	32.00
Plating min: Mating (µm)	0.800
Plating min: Termination (µin)	32.00
Plating min: Termination (µm)	0.80
Termination Interface: Style	Crimp or Compression
Wire Insulation Diameter	2.70mm (.106") max.
Wire Size AWG	24, 26
Wire Size mm <sup>2</sup>	N/A

**Material Info**

**Reference - Drawing Numbers**

Product Specification	PS-35180-003, RPS-35180-001
Sales Drawing	SD-35745-001



<p><b>EU RoHS</b>  <b>ELV and RoHS</b>  <b>Compliant</b>  <b>REACH SVHC</b>  <b>Contains SVHC: No</b>  <b>Halogen-Free</b>  <b>Status</b>  <b>Halogen-Free</b></p>	<p><b>China RoHS</b></p>
--	--------------------------

**Need more information on product environmental compliance?**

Email [productcompliance@molex.com](mailto:productcompliance@molex.com)  
 For a multiple part number RoHS Certificate of Compliance, [click here](#)

Please visit the [Contact Us](#) section for any non-product compliance questions.

**Search Parts in this Series**  
[35745Series](#)

**Mates With**  
[35748 Crimp Terminal](#)

**Use With**  
[35150 VersaBlade™ Hybrid Receptacle Housing](#), [35151 VersaBlade™ Hybrid Plug Housing](#)

**Application Tooling | FAQ**  
*Tooling specifications and manuals are found by selecting the products below. Crimp Height Specifications are then contained in the Application Tooling Specification document.*

Global Description	Product #
Fine Adjust Applicator for .070 Female Crimp Terminal.	<a href="#">0639020700</a>

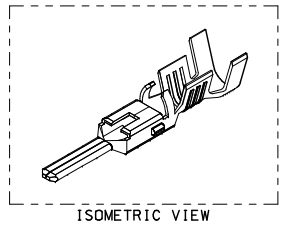
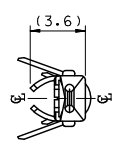
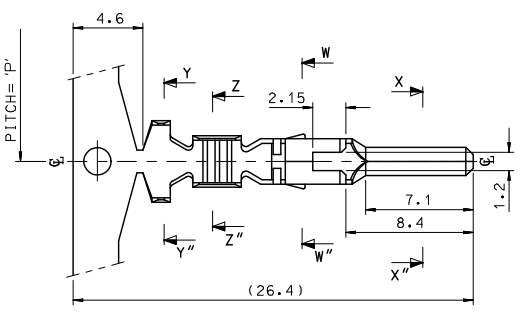
T2 Terminator  
for .070 Female  
Crimp Terminal

0639120700

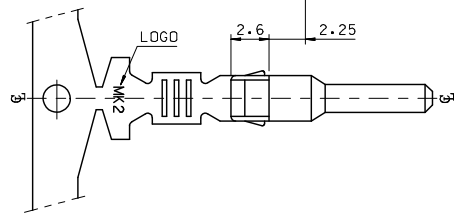
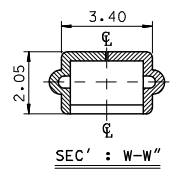
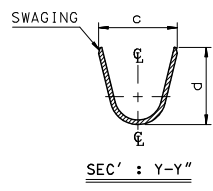
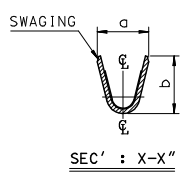
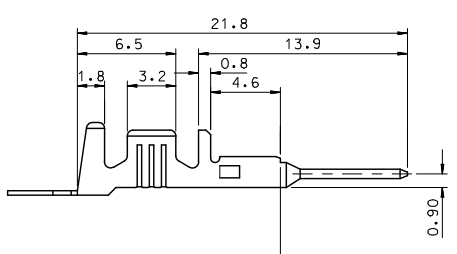
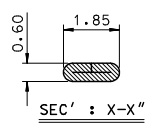
This document was generated on 05/27/2010

**PLEASE CHECK WWW.MOLEX.COM FOR LATEST PART INFORMATION**

10 | 9 | 8 | 7 | 6 | 5 | 4 | 3 | 2 | 1



- NOTES.
1. MATERIAL :  $\text{Ⓟ}$ BRASS, PRE-TIN PLATED
  2. FINISH : 0.8~1.8 $\mu\text{m}$ ,Tin(Sn) plating overall  
0.3~0.8 $\mu\text{m}$ ,Copper(Cu) plating
  3. PRODUCT SPECIFICATION : PS-35150-001, PS-35180-002  
PS-35180-003, PS-35524-001
  4. CRIMPING SPECIFICATION : CS-35745-001
  5. RECOMMENDED LENGTH OF WIRE STRIP IS 4.0~4.8mm



MATERIAL NO	ENG. No.	AWG	a	b	c	d	PITCH 'P'
357450210	35745-0210	#18-#14	3.4	3.8	5.2	4.8	12.0
357450110	35745-0110	#22-#20	2.85	2.8	4.2	4.0	10.6
357450410	35745-0410	#24	2.2	1.75	3.85	3.5	10.6

REVISED EC NO: KOR2009-0151 TDRWN: JHPARK01 2009/05/18 CHKD BY: YANG 2009/06/18 APPR: YUNSIKKIM 2009/07/01 REV DESCRIPTION	QUALITY SYMBOLS	GENERAL TOLERANCES (UNLESS SPECIFIED)	DIMENSION STYLE	SCALE	DESIGN UNITS	THIRD ANGLE PROJECTION	
	$\nabla=0$ $\nabla=0$	mm INCH	MM ONLY	4:1	METRIC		
		4 PLACES ± --- ± ---	DRAWN BY JS.KANG DATE 1998/01/19	TITLE	.070 MALE TERMINAL (A-TYPE)		
		3 PLACES ± --- ± ---	CHECKED BY BK.CHOI DATE 1998/01/19	MOLEX INCORPORATED DOCUMENT NO. SD-35745-001 SHEET NO. 1 OF 01			
	2 PLACES ± 0.2 ± ---	APPROVED BY CW.LEE DATE 1998/01/19					
	1 PLACE ± 0.3 ± ---	ANGULAR ± 1°	MATERIAL NO. SEE TABLE				
DRAFT WHERE APPLICABLE MUST REMAIN WITHIN DIMENSIONS		THIS DRAWING CONTAINS INFORMATION THAT IS PROPRIETARY TO MOLEX INCORPORATED AND SHOULD NOT BE USED WITHOUT WRITTEN PERMISSION					

ib\_frame\_A3\_P\_ME\_T  
Rev. E 2006/04/15

9 | 8 | 7 | 6 | 5 | 4 | 3 | 2 | 1