

PLEASE CHECK WWW.MOLEX.COM FOR LATEST PART INFORMATION

Part Number: [0357252710](#)
Status: **Active**
Description: Quick Disconnect, Female, for 10-14 AWG (5.26-2.08mm²), Metal Strip, Tab 6.35 by 0.81mm (.250 by .032"), Slip-On Type With Slot, Post Tin Plating

Documents:

[Drawing \(PDF\)](#)

[Product Specification PS-35703-001 \(PDF\)](#)

[RoHS Certificate of Compliance \(PDF\)](#)

Agency Certification

UL E92853

General

Product Family Quick Disconnects
Series [35725](#)
Crimp Quality Equipment Yes
Product Name N/A
Type Quick Disconnect

Physical

Barrel Type Open
Gender Female
Glow-Wire Compliant No
Insulation None
Lock to Mating Part Yes
Material - Metal Brass
Orientation Straight
Packaging Type Reel
Polarized to Mating Part No
Tab Thickness 0.81mm (.032")
Tab Width 6.35mm (.250")
Temperature Range - Operating -40°C to +85°C
Wire Insulation Diameter 3.80-5.30mm (.150-.209")
Wire Size AWG 10, 12, 14
Wire Size mm² 2.08 - 5.26

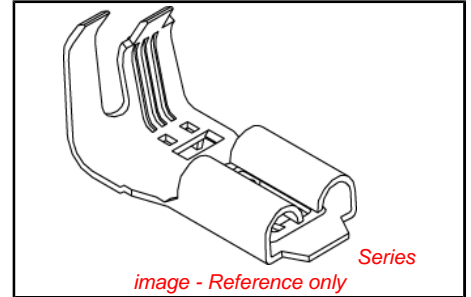
Electrical

Voltage - Maximum Per Wire Specification

Material Info

Reference - Drawing Numbers

Product Specification PS-35703-001
Sales Drawing SD-35725-27*0



EU RoHS

**ELV and RoHS
Compliant**

REACH SVHC

Contains SVHC: No

Halogen-Free

Status

Halogen-Free

**Need more information on product
environmental compliance?**

Email productcompliance@molex.com
For a multiple part number RoHS Certificate of
Compliance, [click here](#)

Please visit the [Contact Us](#) section for any
non-product compliance questions.

China RoHS



Search Parts in this Series

[35725Series](#)

Use With

6.35mm (.250") Tab

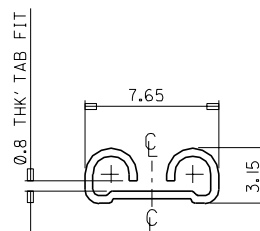
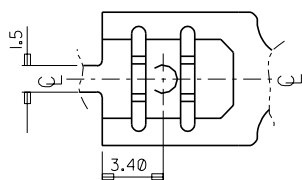
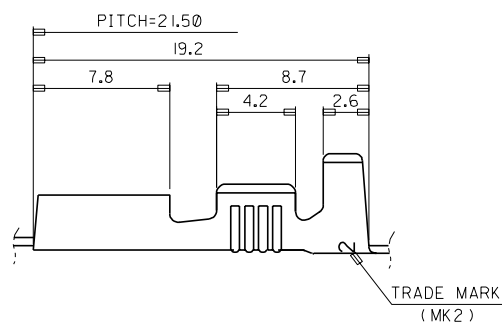
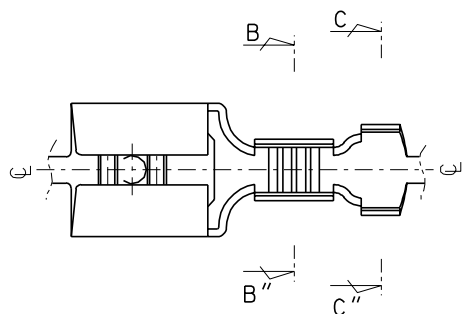
8 7 6 5 4 3 2 1

NOTES

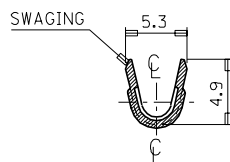
1. MATERIAL : BRASS , 0.45mm THICKNESS
2. PART NUMBER

PART NUMBER	FINISH
35725-2700	UNPLATED
35725-2710	POST PLATED TIN
35725-2740	POST PLATED TIN-LEAD

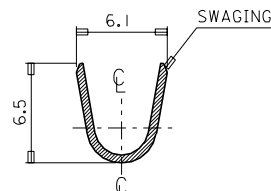
3. MATING TAB THICKNESS : 0.8 mm



VIEW "A"



SEC' : B-B''



SEC' : C-C''

WIRE RANGE				MATERIAL		SEE NOTES		molex MOLEX-KOREA CO.,LTD.	
AWG #14-#10									
INSULATION RANGE				C		REVISED		DRAWN BY	
Ø3.8 -5.3				B		REVISED		J.S.KANG	
DIE FEED: //				A		CAD REDRAWING		APP'D BY	
APPLICATOR FEED: 21.50				LTR		REVISION RECORD		SCALE	
O'TY/ REEL OR PACK				ECN		DATE		4.5:1	
4.000 O'TY/REEL				REVISE ONLY ON CAD SYSTEM				TITLE: .250 SLIP-ON	
								RECEPTACLE(SLOT)-L	
								ENG. NO.	
								SEE NOTES	
								REV	
								C	

THIS DRAWING CONTAINS INFORMATION THAT IS PROPRIETARY TO MOLEX(KOREA) AND SHOULD NOT BE USED WITHOUT WRITTEN PERMISSION
MX-A3(ANSI:290,420)