

**PLEASE CHECK WWW.MOLEX.COM FOR LATEST PART INFORMATION**

**Part Number:** [0357252610](#)  
**Status:** **Active**  
**Description:** Flag Quick Disconnect, Female, for 14-18 AWG (2.00-0.80mm<sup>2</sup>) Wire, Metal Strip, Tab 6.35 by 0.81mm (.250 by .032"), Open Barrel Flag, Tin Plating

**Documents:**

[Drawing \(PDF\)](#) [RoHS Certificate of Compliance \(PDF\)](#)  
[Product Specification PS-35718-1210 \(PDF\)](#)

**Agency Certification**

CSA LR95446  
 UL E92853

**General**

Product Family Quick Disconnects  
 Series [35725](#)  
 Crimp Quality Equipment Yes  
 Product Name N/A  
 Type Quick Disconnect

**Physical**

Barrel Type Open  
 Gender Female  
 Glow-Wire Compliant No  
 Insulation None  
 Lock to Mating Part Yes  
 Material - Metal Brass  
 Material - Plating Mating Tin  
 Material - Plating Termination Tin  
 Orientation Flag  
 Packaging Type Reel  
 Plating min: Mating (µm) 32  
 Plating min: Mating (µm) 0.8  
 Plating min: Termination (µm) 32  
 Plating min: Termination (µm) 0.8  
 Polarized to Mating Part No  
 Tab Thickness 0.81mm (.032")  
 Tab Width 6.35mm (.250")  
 Temperature Range - Operating Per Wire Specification  
 Wire Insulation Diameter 3.60mm (.142") max.  
 Wire Size AWG 14, 16, 18  
 Wire Size mm<sup>2</sup> 0.80 - 2.00

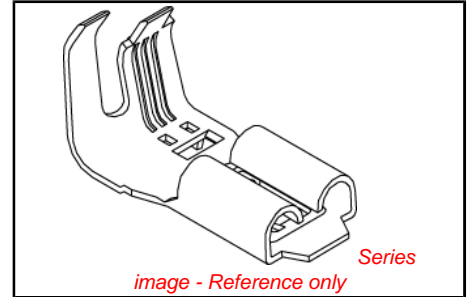
**Electrical**

Voltage - Maximum Per Wire Specification

**Material Info**

**Reference - Drawing Numbers**

Product Specification PS-35718-1210  
 Sales Drawing SD-35725-26\*0



<p><b>EU RoHS</b>  <b>ELV and RoHS</b>  <b>Compliant</b>  <b>REACH SVHC</b>  <b>Contains SVHC: No</b>  <b>Halogen-Free</b>  <b>Status</b>  <b>Halogen-Free</b></p>	<p><b>China RoHS</b></p> 
--	--

**Need more information on product environmental compliance?**  
 Email [productcompliance@molex.com](mailto:productcompliance@molex.com)  
 For a multiple part number RoHS Certificate of Compliance, [click here](#)  
 Please visit the [Contact Us](#) section for any non-product compliance questions.

**Search Parts in this Series**  
[35725Series](#)

**Use With**  
 6.35mm (.250") Tab

**Application Tooling | FAQ**  
*Tooling specifications and manuals are found by selecting the products below. Crimp Height Specifications are then contained in the Application Tooling Specification document.*  
**Japan**  
**Description** **Product #**  
 End-Feed Applicator [0573463300](#)

**PLEASE CHECK WWW.MOLEX.COM FOR LATEST PART INFORMATION**

DO NOT SCALE DRAWING DIMENSION IN METRIC

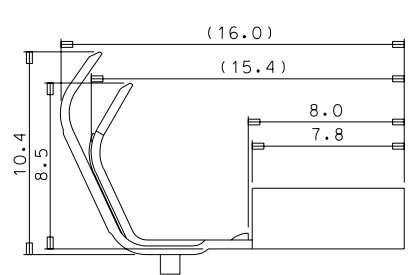
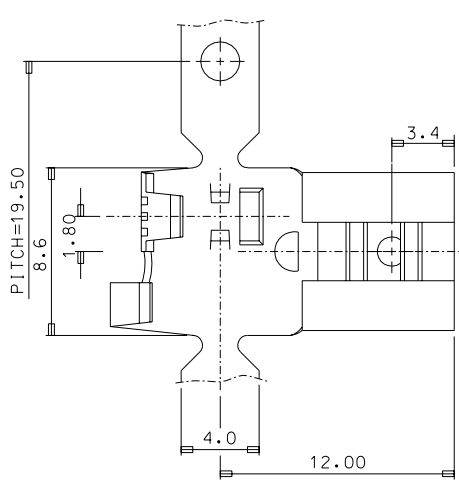
DWG. NO. SD-35725-26\*0

SIMILAR ITEM

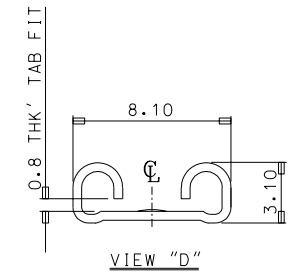
PROJECT NO.

C

B



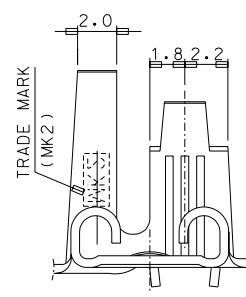
“D”



NOTES

1. MATERIAL:BRASS, 0.45mmThk'
2. FINISH : POST-TIN PLATED
3. MATING TAB THICKNESS:0.8mmThk'
4. APPLICABLE WIRERANE :AWG#18 - #12
5. RECOMMENDED LENGTH OF WIRE STRIP IS 4.8mm - 5.3mm

MATERIAL NO.	ENG NO.	FINISH
357252600	35725-2600	UNPLATED
357252610	35725-2610	POST TIN PLATED



REVISED EC NO. KOR2004-0148 DRAWN: C.B.CHEN 04/06/22 CHK: W.Y.YANG APPR: C.W.LEE	QUALITY SYMBOLS MAJOR = CRITICAL =	GENERAL TOLERANCES: (UNLESS SPECIFIED)		SCALE 5:1	DESIGN UNITS <input checked="" type="checkbox"/> MM <input type="checkbox"/> INCH	THIRD ANGLE PROJECTION <input type="checkbox"/> MM <input type="checkbox"/> INCH <input checked="" type="checkbox"/> MM ONLY	SHT	REV
		4 PLACES ±0.	±.	DRAWN BY & DATE W.Y.YANG 93/07/21	TITLE: .250 FLAG REC' TERMINAL		REVISE ON CAD ONLY	
C	DESCRIPTION	3 PLACES ±0.	±.	CHECKED BY & DATE B.K.CHOI 93/07/21	MOLEX INCORPORATED			
		2 PLACES ±0.30	±.	APPROVED BY & DATE C.W.LEE 93/07/21	CAD FILENAME S72526@AA.DGN	MATERIAL NO. SEE NOTES	DRAWING NO. SD-35725-26*0	SHEET NO. 1 OF 1
DRAFT WHERE APPLICABLE MUST REMAIN WITHIN DIMENSIONS		1 PLACE ±0.30	±.	THIS DRAWING CONTAINS INFORMATION THAT IS PROPRIETARY TO MOLEX INCORPORATED AND SHOULD NOT BE USED WITHOUT WRITTEN PERMISSION.				
		ANGULAR: ± °		SIZE B				

MX-A3