

PLEASE CHECK WWW.MOLEX.COM FOR LATEST PART INFORMATION

Part Number: [0357252411](#)
Status: **Active**
Description: Quick Disconnect, Female, for 14-18 AWG (2.00 - 0.80mm²) Wire, Metal Strip, Tab 6.35 by 0.81mm (.250 by .032"), Slip-On Type with Slot, Post Tin Plating, High Tension Type

Documents:

[Drawing \(PDF\)](#) [RoHS Certificate of Compliance \(PDF\)](#)
[Product Specification PS-35703-001 \(PDF\)](#)

Agency Certification

UL E92853

General

Product Family Quick Disconnects
 Series [35725](#)
 Crimp Quality Equipment Yes
 Product Name N/A
 Type Quick Disconnect

Physical

Barrel Type Open
 Gender Female
 Glow-Wire Compliant No
 Insulation None
 Lock to Mating Part Yes
 Material - Metal Brass
 Orientation Straight
 Packaging Type Reel
 Polarized to Mating Part No
 Tab Thickness 0.81mm (.032")
 Tab Width 6.35mm (.250")
 Temperature Range - Operating -40°C to +120°C
 Wire Insulation Diameter 3.81mm (.150") max.
 Wire Size AWG 14, 16, 18
 Wire Size mm² 0.80 - 2.00

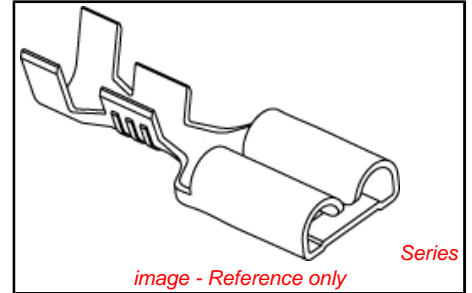
Electrical

Voltage - Maximum 300V

Material Info

Reference - Drawing Numbers

Product Specification PS-35703-001
 Sales Drawing SD-35725-002



EU RoHS

ELV and RoHS Compliant
REACH SVHC Contains SVHC: No
Halogen-Free Status
Halogen-Free

China RoHS



Need more information on product environmental compliance?

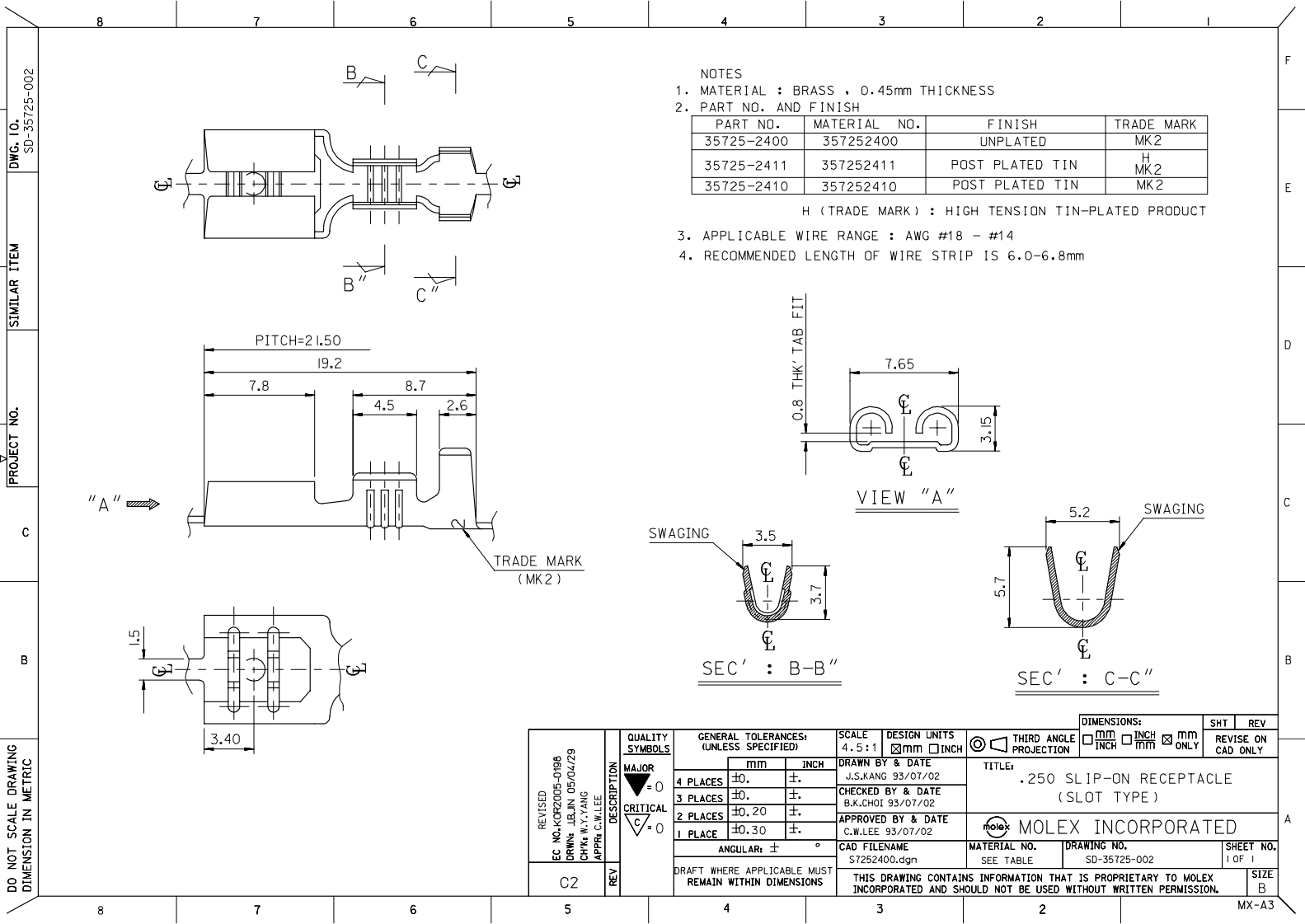
Email productcompliance@molex.com
 For a multiple part number RoHS Certificate of Compliance, [click here](#)

Please visit the [Contact Us](#) section for any non-product compliance questions.

Search Parts in this Series
[35725Series](#)

Use With
 6.35mm (.250") Tab

PLEASE CHECK WWW.MOLEX.COM FOR LATEST PART INFORMATION



- NOTES
1. MATERIAL : BRASS , 0.45mm THICKNESS
 2. PART NO. AND FINISH

PART NO.	MATERIAL NO.	FINISH	TRADE MARK
35725-2400	357252400	UNPLATED	MK2
35725-2411	357252411	POST PLATED TIN	H MK2
35725-2410	357252410	POST PLATED TIN	MK2

H (TRADE MARK) : HIGH TENSION TIN-PLATED PRODUCT

3. APPLICABLE WIRE RANGE : AWG #18 - #14
4. RECOMMENDED LENGTH OF WIRE STRIP IS 6.0-6.8mm

DWG. NO. SD-35725-002
 SIMILAR ITEM
 PROJECT NO.
 DO NOT SCALE DRAWING
 DIMENSION IN METRIC

REV	DESCRIPTION	QUALITY SYMBOLS	GENERAL TOLERANCES: (UNLESS SPECIFIED)		SCALE	DESIGN UNITS	THIRD ANGLE PROJECTION	DIMENSIONS:			SHT	REV
			mm	INCH				mm	INCH	mm ONLY		
02	REVISED EC NO. KOP2005-0198 DRWN: JB.JIN 05/04/29 CHK: W.Y. YANG APPR: C.W.LEE	MAJOR = 0 CRITICAL = 0	4 PLACES	±0.	±.	4.5:1	mm	INCH	TITLE: .250 SLIP-ON RECEPTACLE (SLOT TYPE)			REVISE ON CAD ONLY
			3 PLACES	±0.	±.				MOLEX INCORPORATED			
			2 PLACES	±0.20	±.				CAD FILENAME	MATERIAL NO.	DRAWING NO.	SHEET NO.
			1 PLACE	±0.30	±.				S7252400.dgn	SEE TABLE	SD-35725-002	1 OF 1
			ANGULAR: ± °						THIS DRAWING CONTAINS INFORMATION THAT IS PROPRIETARY TO MOLEX INCORPORATED AND SHOULD NOT BE USED WITHOUT WRITTEN PERMISSION.			SIZE B

MX-A3