

**PLEASE CHECK WWW.MOLEX.COM FOR LATEST PART INFORMATION**

**Part Number:** **0357180910**  
**Status:** **Active**  
**Description:** 4.75mm (.187") Tab Slip-On Terminal, Female, Wire Range 16-20 AWG (1.31-0.52mm<sup>2</sup>), 0.51mm Tab Thickness, Post-Tin Plated

**Documents:**

[Drawing \(PDF\)](#) [Product Specification PS-68417-001 \(PDF\)](#)  
[Product Specification PS-35703-001 \(PDF\)](#) [RoHS Certificate of Compliance \(PDF\)](#)

**Agency Certification**

CSA	LR95446
TUV	R9451159
UL	E92853

**General**

Product Family	Quick Disconnects
Series	35718
Crimp Quality Equipment	Yes
Product Name	Slip-On
Type	Quick Disconnect

**Physical**

Barrel Type	Open
Gender	Female
Glow-Wire Compliant	No
Insulation	None
Lock to Mating Part	Yes
Material - Metal	Brass
Material - Plating Mating	Tin
Material - Plating Termination	Tin
Orientation	Straight
Packaging Type	Reel
Plating min: Mating (µin)	40
Plating min: Mating (µm)	1
Plating min: Termination (µin)	40
Plating min: Termination (µm)	1
Polarized to Mating Part	No
Tab Thickness	0.51mm (.020")
Tab Width	4.75mm (.187")
Temperature Range - Operating	-40°C to +105°C
Termination Interface: Style	Crimp or Compression
Wire Insulation Diameter	3.50mm (.138") max.
Wire Size AWG	16, 18, 20
Wire Size mm <sup>2</sup>	0.50 - 1.30

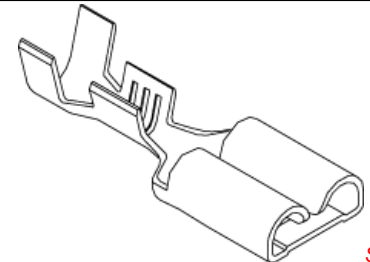
**Electrical**

Voltage - Maximum	250V
-------------------	------

**Material Info**

**Reference - Drawing Numbers**

Product Specification	PS-35703-001, PS-68417-001
Sales Drawing	SD-35718-09*0



*image - Reference only*

**EU RoHS**

**ELV and RoHS**  
**Compliant**

**REACH SVHC**

**Contains SVHC: No**

**Halogen-Free**

**Status**

**Halogen-Free**

**Need more information on product environmental compliance?**

Email [productcompliance@molex.com](mailto:productcompliance@molex.com)  
For a multiple part number RoHS Certificate of Compliance, [click here](#)

Please visit the [Contact Us](#) section for any non-product compliance questions.

**China RoHS**



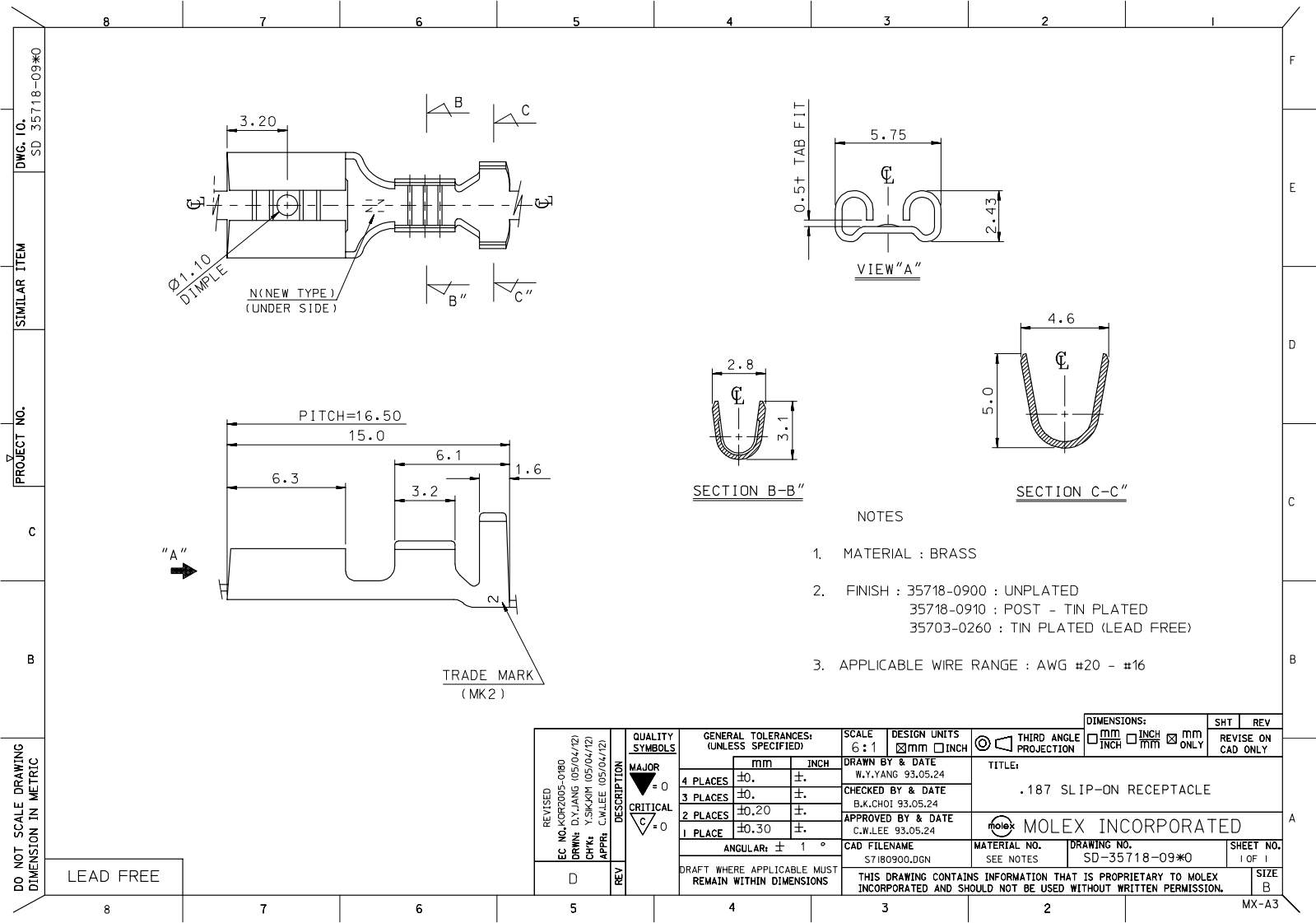
**Search Parts in this Series**

35718Series

**Use With**

4.75mm (.187") Tab

**PLEASE CHECK [WWW.MOLEX.COM](http://WWW.MOLEX.COM) FOR LATEST PART INFORMATION**



REVISED		DESCRIPTION	QUALITY SYMBOLS	GENERAL TOLERANCES: (UNLESS SPECIFIED)		SCALE	DESIGN UNITS	THIRD ANGLE PROJECTION	DIMENSIONS:			SHT	REV	
				mm	INCH	6:1	<input checked="" type="checkbox"/> mm <input type="checkbox"/> INCH			<input type="checkbox"/> mm <input type="checkbox"/> INCH	<input type="checkbox"/> mm <input checked="" type="checkbox"/> INCH ONLY	mm	INCH	REVISION ON CAD ONLY
EC NO. KOR2005-0180 DRWN: D.Y. JANG (05/04/12) CHK: Y. SK. QIM (05/04/12) APPR: C.W. LEE (05/04/12)	MAJOR Δ 0  CRITICAL Δ 0			4 PLACES	±0.	±.	DRAWN BY & DATE W.Y. YANG 93.05.24	TITLE:  .187 SLIP-ON RECEPTACLE		MOLEX INCORPORATED				
				3 PLACES	±0.	±.	CHECKED BY & DATE B.K. CHOI 93.05.24							
				2 PLACES	±0.20	±.	APPROVED BY & DATE C.W. LEE 93.05.24							
				1 PLACE	±0.30	±.								
				ANGULAR: ± 1 °			CAD FILENAME S7180900.DGN							
D	REV	DRAFT WHERE APPLICABLE MUST REMAIN WITHIN DIMENSIONS				THIS DRAWING CONTAINS INFORMATION THAT IS PROPRIETARY TO MOLEX INCORPORATED AND SHOULD NOT BE USED WITHOUT WRITTEN PERMISSION.							SIZE B	