

PLEASE CHECK WWW.MOLEX.COM FOR LATEST PART INFORMATION

Part Number: [0357110810](#)
Status: **Active**
Description: 2.79mm (.110") Slip-On Receptacle Terminal, Quick Disconnect, 0.50mm (.020") Tab Thickness, Wire Range 20-22 AWG (0.52-0.33mm²), Post-Tin Plated

Documents:

Drawing (PDF)	Product Specification PS-68428-001 (PDF)
Product Specification PS-35544-001 (PDF)	RoHS Certificate of Compliance (PDF)
Product Specification PS-35702-001 (PDF)	

Agency Certification

CSA	LR95446
UL	E92853

General

Product Family	Quick Disconnects
Series	35711
Crimp Quality Equipment	Yes
Product Name	Slip-On
Type	Quick Disconnect

Physical

Barrel Type	Open
Gender	Female
Glow-Wire Compliant	No
Insulation	None
Lock to Mating Part	None
Material - Metal	Brass
Material - Plating Mating	Tin
Material - Plating Termination	Tin
Orientation	Strait
Packaging Type	Reel
Plating min: Mating (µm)	40
Plating min: Mating (µm)	1
Plating min: Termination (µm)	40
Plating min: Termination (µm)	1
Polarized to Mating Part	No
Tab Thickness	0.51mm (.020")
Tab Width	2.79mm (.110")
Temperature Range - Operating	-40°C to +120°C
Termination Interface: Style	Crimp or Compression
Wire Insulation Diameter	1.50-2.00mm (.059-.079") max.
Wire Size AWG	20, 22
Wire Size mm ²	0.33 - 0.52

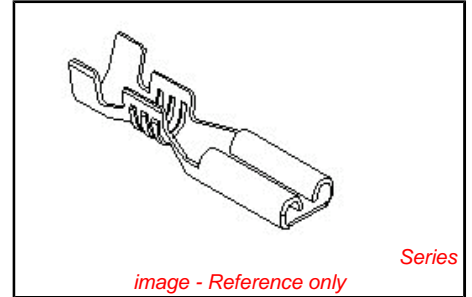
Electrical

Voltage - Maximum	Per Wire Specification
-------------------	------------------------

Material Info

Reference - Drawing Numbers

Product Specification	PS-35544-001, PS-35702-001, PS-68428-001
Sales Drawing	SD-35711-08*0



<p>EU RoHS ELV and RoHS Compliant REACH SVHC Contains SVHC: No Halogen-Free Status Halogen-Free</p>	<p>China RoHS</p>
--	--------------------------

Need more information on product environmental compliance?

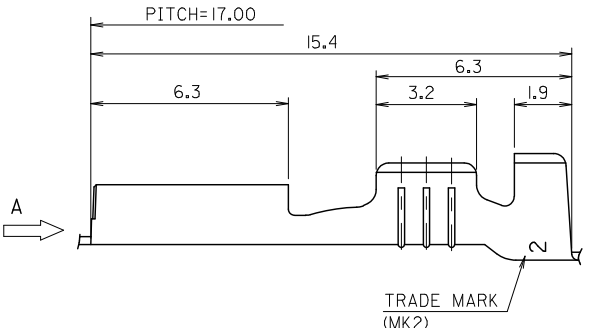
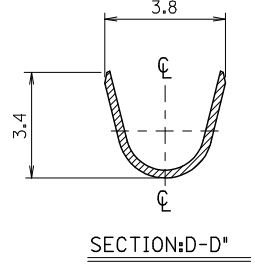
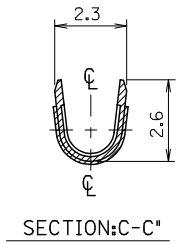
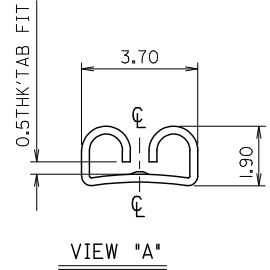
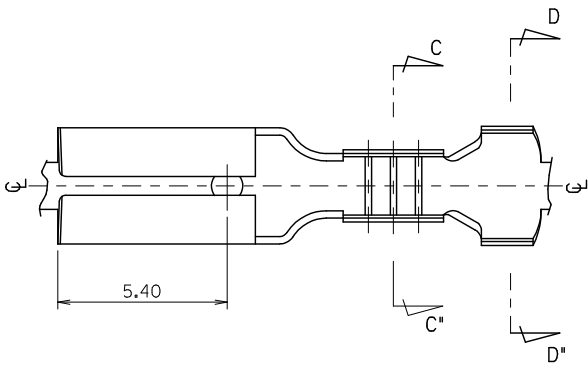
Email productcompliance@molex.com
 For a multiple part number RoHS Certificate of Compliance, [click here](#)

Please visit the [Contact Us](#) section for any non-product compliance questions.

Search Parts in this Series
[35711Series](#)

PLEASE CHECK WWW.MOLEX.COM FOR LATEST PART INFORMATION

10 9 8 7 6 5 4 3 2 1



- NOTES.
- MATERIAL : BRASS
 - FINISH : 35711-0800 : UNPLATED
35711-0810 : ©PRE-TIN PLATED
0.8~1.8 μm TIN PLATING
OVERALL 0.3~0.8μm COPPER PLATING
 - PRODUCT SPECIFICATION : PS-35544-001
PS-35702-001
PS-68428-001
 - MATES WITH : 0.5t TAB
 - APPLICABLE WIRE RANGE : AWG #22~#20

REVISED EC. NO.: KOR2009-0111 DRWN: JHPARK01 2009/01/30 CHKDWT: YANG 2009/01/30 APPR: YUNSIKKIM 2009/01/30	QUALITY SYMBOLS ▽=0 ▽=0	GENERAL TOLERANCES (UNLESS SPECIFIED)		DIMENSION STYLE MM ONLY		SCALE 8:1	DESIGN UNITS METRIC	THIRD ANGLE PROJECTION	
		4 PLACES ± --- ± ---	3 PLACES ± --- ± ---	2 PLACES ± --- ± ---	1 PLACE ± 0.30 ± ---	ANGULAR ± ---°	DRAWN BY WY. YANG	DATE 1993/04/15	TITLE .110 SLIP-ON RECEPTACLE
		DRAFT WHERE APPLICABLE MUST REMAIN WITHIN DIMENSIONS		SEE NOTE	MATERIAL NO.	DOCUMENT NO.	MOLEX INCORPORATED	SD-35711-08*0	SHEET NO. 1 OF 01
		THIS DRAWING CONTAINS INFORMATION THAT IS PROPRIETARY TO MOLEX INCORPORATED AND SHOULD NOT BE USED WITHOUT WRITTEN PERMISSION							

9 8 7 6 5 4 3 2 1