

**PLEASE CHECK WWW.MOLEX.COM FOR LATEST PART INFORMATION**

**Part Number:** [0351960110](#)  
**Status:** **Active**  
**Description:** 6.35mm (.250") Tab MP-Lock™ Housing, Male, 1 Circuit

**Documents:**

|  |  |
|--|--|
| <a href="#">3D Model</a>                                 | <a href="#">Product Specification PS-35960-001 (PDF)</a> |
| <a href="#">Drawing (PDF)</a>                            | <a href="#">RoHS Certificate of Compliance (PDF)</a>     |
| <a href="#">Product Specification PS-35196-003 (PDF)</a> |  |

**Agency Certification**

UL E29179

**General**

|                |                |
|----------------|----------------|
| Product Family | Crimp Housings |
| Series         | 35196          |
| Product Name   | MP-Lock™       |

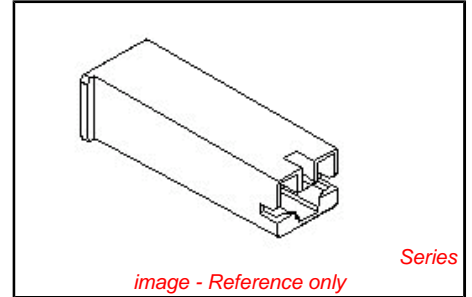
**Physical**

|                               |                 |
|-------------------------------|-----------------|
| Circuits (maximum)            | 1               |
| Color - Resin                 | Natural         |
| Flammability                  | 94V-2           |
| Gender                        | Male            |
| Glow-Wire Compliant           | No              |
| Material - Resin              | Nylon           |
| Number of Rows                | 1               |
| Packaging Type                | Bag             |
| Panel Mount                   | No              |
| Pitch - Mating Interface (in) | 0.000 In        |
| Pitch - Mating Interface (mm) | 0.00 mm         |
| Temperature Range - Operating | -40°C to +105°C |

**Material Info**

**Reference - Drawing Numbers**

|                       |                            |
|-----------------------|----------------------------|
| Product Specification | PS-35196-003, PS-35960-001 |
| Sales Drawing         | SD-35196-0110              |



|  |                          |
|--|--------------------------|
| <p><b>EU RoHS</b><br/> <b>ELV and RoHS</b><br/> <b>Compliant</b><br/> <b>REACH SVHC</b><br/> <b>Contains SVHC: No</b><br/> <b>Halogen-Free</b><br/> <b>Status</b><br/> <b>Halogen-Free</b></p> | <p><b>China RoHS</b></p> |
|--|--------------------------|

**Need more information on product environmental compliance?**

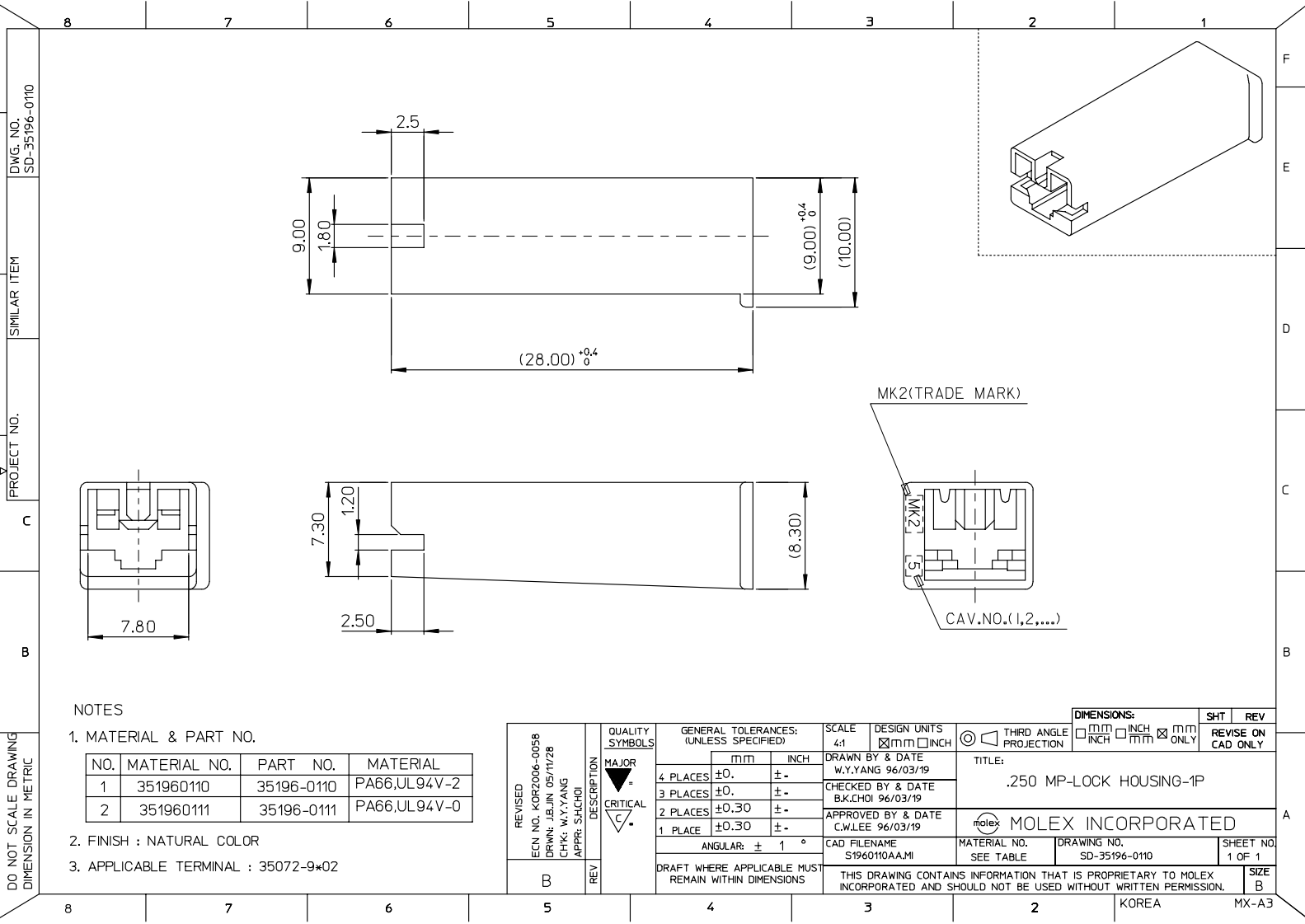
Email [productcompliance@molex.com](mailto:productcompliance@molex.com)  
 For a multiple part number RoHS Certificate of Compliance, [click here](#)

Please visit the [Contact Us](#) section for any non-product compliance questions.

**Search Parts in this Series**  
[35196Series](#)

**Use With**  
[35072-9\\*02](#)

**PLEASE CHECK WWW.MOLEX.COM FOR LATEST PART INFORMATION**



NOTES

1. MATERIAL & PART NO.

| NO. | MATERIAL NO. | PART NO.   | MATERIAL     |
|-----|--------------|------------|--------------|
| 1   | 351960110    | 35196-0110 | PA66,UL94V-2 |
| 2   | 351960111    | 35196-0111 | PA66,UL94V-0 |

2. FINISH : NATURAL COLOR

3. APPLICABLE TERMINAL : 35072-9\*02

|   |                    |   |   |   |                                   |  |  |  |                              |                     |
|---|--------------------|---|---|---|-----------------------------------|--|--|--|------------------------------|---------------------|
| REVISED<br>ECN NO. KOR2006-0058<br>DRWN: JBJUN 05/11/28<br>CHK: W.Y.YANG<br>APPR: SHLCHOI | DESCRIPTION<br>REV | QUALITY SYMBOLS<br>MAJOR =<br>CRITICAL =<br>C | GENERAL TOLERANCES:<br>(UNLESS SPECIFIED)   |   | SCALE<br>4:1                      | DESIGN UNITS<br><input checked="" type="checkbox"/> MM <input type="checkbox"/> INCH | THIRD ANGLE PROJECTION<br><input type="checkbox"/> FIRST ANGLE <input checked="" type="checkbox"/> THIRD ANGLE | DIMENSIONS:<br><input type="checkbox"/> MM <input type="checkbox"/> INCH <input checked="" type="checkbox"/> MM ONLY | SHT<br>REV                   |                     |
|   |                    |   | 4 PLACES ±0.    ±-<br>3 PLACES ±0.    ±-<br>2 PLACES ±0.30 ±-<br>1 PLACE ±0.30 ±-<br>ANGULAR: ± 1 °                               | DRAWN BY & DATE<br>W.Y.YANG 96/03/19<br>CHECKED BY & DATE<br>B.K.CHOI 96/03/19<br>APPROVED BY & DATE<br>C.W.LEE 96/03/19<br>CAD FILENAME<br>S1960110AA.MI | TITLE:<br>.250 MP-LOCK HOUSING-1P |  | MOLEX INCORPORATED   | MATERIAL NO.<br>SEE TABLE  | DRAWING NO.<br>SD-35196-0110 | SHEET NO.<br>1 OF 1 |
| DRAFT WHERE APPLICABLE MUST<br>REMAIN WITHIN DIMENSIONS                                   |                    |   | THIS DRAWING CONTAINS INFORMATION THAT IS PROPRIETARY TO MOLEX<br>INCORPORATED AND SHOULD NOT BE USED WITHOUT WRITTEN PERMISSION. |   |                                   |  |  |  |                              | SIZE<br>B           |

DO NOT SCALE DRAWING  
DIMENSION IN METRIC

SIMILAR ITEM

PROJECT NO.

B

A

KOREA

F

E

D

C

B

A

MX-A3