

PLEASE CHECK WWW.MOLEX.COM FOR LATEST PART INFORMATION

Part Number: [0351820190](#)
Status: **Active**
Description: 1.78mm (.070") Tab, Wire-to-Wire Male Housing TPA™, 1 Circuit, Vertical

Documents:

3D Model	Product Specification PS-35182-003 (PDF)
Drawing (PDF)	RoHS Certificate of Compliance (PDF)
Product Specification PS-35150-001 (PDF)	

General

Product Family	Accessories
Series	35182
Component Type	Retainer
Product Name	TPA™ - Term Pos Assurance

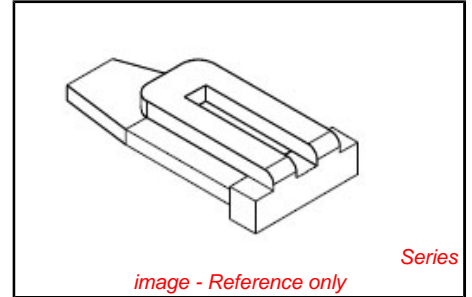
Physical

Circuits (Loaded)	1
Color - Resin	Natural
Lock to Mating Part	Yes
Material - Resin	Nylon
Number of Rows	1
Packaging Type	Bag
Temperature Range - Operating	-40°C to +120°C

Material Info

Reference - Drawing Numbers

Product Specification	PS-35150-001, PS-35182-003
Sales Drawing	SD-35182-019*



EU RoHS
ELV and RoHS
Compliant
REACH SVHC
Contains SVHC: No
Halogen-Free
Status
Halogen-Free

China RoHS



Need more information on product environmental compliance?

Email productcompliance@molex.com
 For a multiple part number RoHS Certificate of Compliance, [click here](#)

Please visit the [Contact Us](#) section for any non-product compliance questions.

Search Parts in this Series
[35182Series](#)

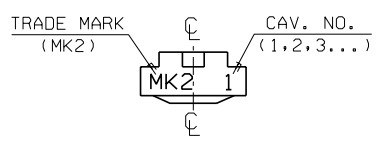
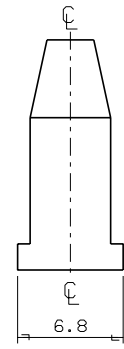
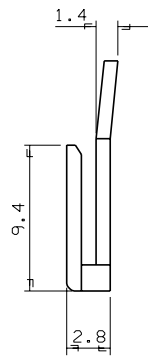
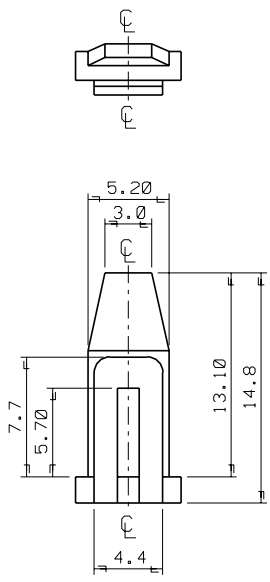
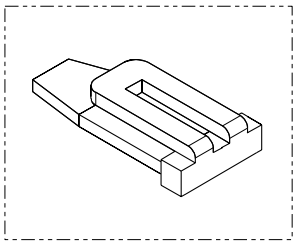
Use With
[35181 Wire-to-Wire Female Housing](#)

PLEASE CHECK WWW.MOLEX.COM FOR LATEST PART INFORMATION

ENG. NO. SD 35182-019*
 EDP. NO.
 SIMILAR ITEM
 PROJECT NO. .070 MULTI CONN.

8 7 6 5 4 3 2 1

- NOTES
1. MATERIAL : NYLON 66 (UL94V-2)
 2. COLOR : 35182-0190 (NATURAL)
 35182-0192 (RED)
 35182-0193 (YELLOW)
 35182-0194 (BLUE)
 3. MATCHED HOUSING : 35181-020*
 35181-021*
 35181-022*



				MATERIAL SEE NOTES		molex MOLEX-KOREA CO.,LTD.	
				GENERAL TOLERANCE		DRAWN BY J.S.KANG	
				DIMENSION : +0.3		CHK'D BY	
				ANGLE : +1°		SCALE 4/1	
				DIMENSION CLASSIFICATION		APP'D BY	
				▽ : CRITICAL ▼ : MAJOR		TITLE :	
A NEW RELEASED PDR 94-041 95 9.28				▽ : REFERENCE		.070 MULTI FEMALE HOUSING T.P.A-1P	
LTR REVISION RECORD ECN DATE				ASS'Y PART		SHEET 1 OF 1	
				DESCRIPTION ENG. NO.		REV A	
REVISE ONLY ON CAD SYSTEM				---		ENG. NO. SD 35182-019*	

S1820190.DGN

THIS DRAWING CONTAINS INFORMATION THAT IS PROPRIETARY TO MOLEX(KOREA) AND SHOULD NOT BE USED WITHOUT WRITTEN PERMISSION MX-A3(ANSI:Z90,420)