

PLEASE CHECK WWW.MOLEX.COM FOR LATEST PART INFORMATION

Part Number: [0351810210](#)
Status: **Active**
Description: 1.78mm (.070") Tab Multiple Wire-to-Wire Female Housing, 2 Circuits, Vertical, B-Type

Documents:

[Drawing \(PDF\)](#) [RoHS Certificate of Compliance \(PDF\)](#)
[Product Specification PS-35182-003 \(PDF\)](#)

Agency Certification

CSA LR19980
 UL E29179

General

Product Family Crimp Housings
 Series [35181](#)
 Product Name N/A

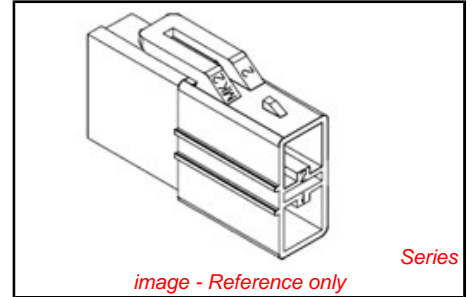
Physical

Circuits (maximum) 2
 Color - Resin Natural
 Flammability 94V-0
 Gender Female
 Glow-Wire Compliant No
 Material - Resin Polyester
 Number of Rows 2
 Packaging Type Bag
 Panel Mount No
 Pitch - Mating Interface (in) 0.315 In
 Pitch - Mating Interface (mm) 8.00 mm
 Stackable No
 Temperature Range - Operating -40°C to +120°C

Material Info

Reference - Drawing Numbers

Product Specification PS-35182-003
 Sales Drawing SD-35181-021*



EU RoHS

ELV and RoHS Compliant
REACH SVHC
 Not Reviewed
Halogen-Free Status
Not Reviewed

China RoHS



Need more information on product environmental compliance?

Email productcompliance@molex.com
 For a multiple part number RoHS Certificate of Compliance, [click here](#)

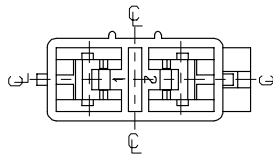
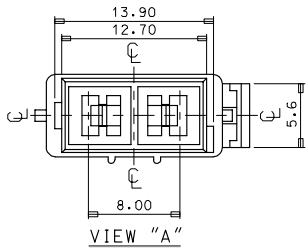
Please visit the [Contact Us](#) section for any non-product compliance questions.

Search Parts in this Series
[35181Series](#)

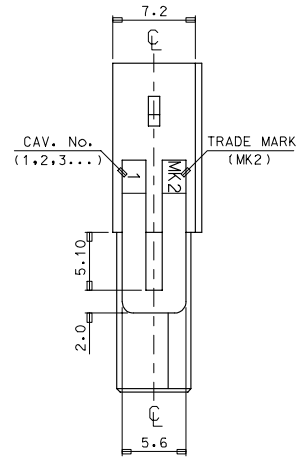
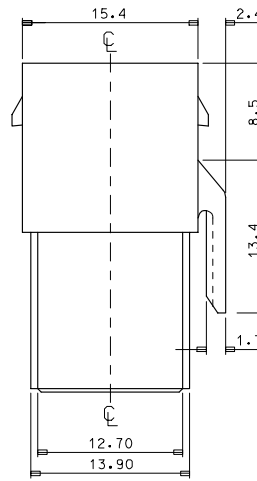
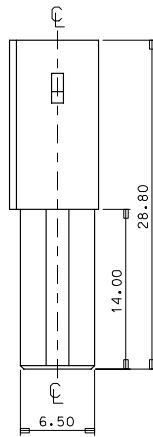
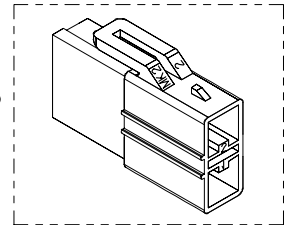
Mates With
[35180 Wire-to-Wire Male Housing](#)

Use With
[35745 VersaBlade™ Crimp Terminal](#), [35182 Versablade™ Wire-to-Wire Male Housing](#)
[TPA™](#)

PLEASE CHECK WWW.MOLEX.COM FOR LATEST PART INFORMATION



- NOTES
1. MATERIAL & COLOR : SEE TABLE
 2. MATCHED HOUSING : 35180-040*
35180-060*
 3. APPLICABLE TERMINAL : 35745-0*10
 4. APPLICABLE T.P.A : 35182-019*



NO	PRODUCT		MATERIAL	
	PART NO	MATERIAL NO	COLOR	DESCRIPTION
1	35181-0210	351810210	NATURAL	PBT (UL94V-0)
2	35181-0214	351810214	BLUE	
3	35181-0219	351810219	NATURAL	PBT/PC(UL94V-0)

REVISED EC NO: KOR2008-0048 2007/09/10 DRWN: JHPARK01 CHKD: W. YANG 2007/09/10 APPR: TUNSIKIM 2007/09/10	QUALITY SYMBOLS ▽=0 ▽=0	GENERAL TOLERANCES (UNLESS SPECIFIED)	DIMENSION STYLE		SCALE	DESIGN UNITS	THIRD ANGLE PROJECTION	
			MM ONLY		3:1	METRIC		
B	DESCRIPTION	DRAFT WHERE APPLICABLE MUST REMAIN WITHIN DIMENSIONS	4 PLACES	± ---	± ---	DRAWN BY JS. KANG	DATE	TITLE .070 MULTI W/W CONN FEMALE HSG-2P(B)
			3 PLACES	± ---	± ---			
REV			2 PLACES	± ---	± ---	APPROVED BY	DATE	MOLEX INCORPORATED
			1 PLACE	± 0.3	± ---			
			ANGULAR ± 1 °		SD-35181-021*		SHEET NO.	1 OF 01
			SEE TABLE		THIS DRAWING CONTAINS INFORMATION THAT IS PROPRIETARY TO MOLEX INCORPORATED AND SHOULD NOT BE USED WITHOUT WRITTEN PERMISSION			