

PLEASE CHECK WWW.MOLEX.COM FOR LATEST PART INFORMATION

Part Number: [0351550300](#)
Status: **Active**
Description: 2.50mm (.098") Pitch Wire-to-Board Housing, Positive Lock, Natural, 3 Circuits

Documents:

3D Model	Product Specification PS-35184-001 (PDF)
Drawing (PDF)	Product Specification PS-68143-001 (PDF)
Product Specification PS-35155-001 (PDF)	RoHS Certificate of Compliance (PDF)
Product Specification PS-35155-002 (PDF)	

Agency Certification

CSA	LR19980
TUV	R72081037
UL	E29179

General

Product Family	Crimp Housings
Series	35155
Product Name	N/A

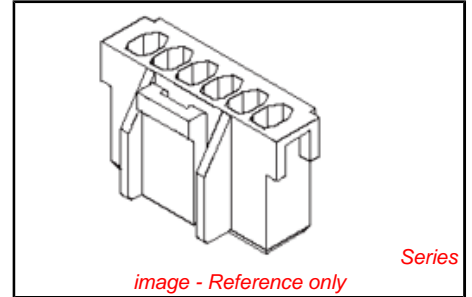
Physical

Breakaway	No
Circuits (maximum)	3
Color - Resin	Natural
Flammability	94V-0
Gender	Female
Glow-Wire Compliant	No
Keying to Mating Part	None
Lock to Mating Part	Yes
Material - Resin	Polyester
Number of Rows	1
Packaging Type	Bag
Panel Mount	No
Pitch - Mating Interface (in)	0.098 In
Pitch - Mating Interface (mm)	2.50 mm
Temperature Range - Operating	-40°C to +105°C

Material Info

Reference - Drawing Numbers

Product Specification	PS-35155-001, PS-35155-002, PS-35184-001, PS-68143-001, RPS-35155-101, RPS-35155-102
Sales Drawing	SD-35155-**0*



EU RoHS

ELV and RoHS Compliant

REACH SVHC

Contains SVHC: No

Halogen-Free

Status

Halogen-Free

Need more information on product environmental compliance?

Email productcompliance@molex.com
 For a multiple part number RoHS Certificate of Compliance, [click here](#)

Please visit the [Contact Us](#) section for any non-product compliance questions.

China RoHS



Search Parts in this Series

[35155Series](#)

Mates With

[35312](#) Vertical Shrouded Header, [35184](#) Wire-to-Wire Plug Housing

Use With

[5103](#) SPOX™ Crimp Terminal

PLEASE CHECK WWW.MOLEX.COM FOR LATEST PART INFORMATION

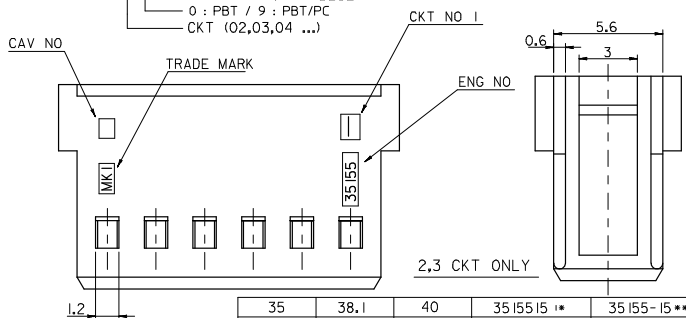
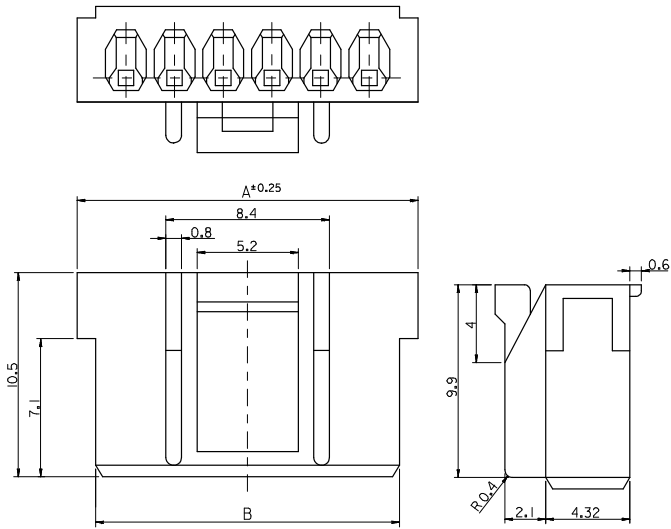
10 9 8 7 6 5 4 3 2 1

NOTE

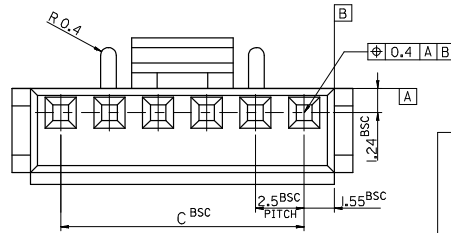
- 1. MATERIAL : SEE TABLE
- 2. USED WITH TERMINAL : 5103-*
- 3. MATED WITH WAFER ASS'Y : 35312-***

LEGEND

- 35155 - **
- COLOR : 0 --- NATURAL
- 1 --- BLACK
- 2 --- RED
- 3 --- YELLOW
- 4 --- BLUE
- 0 : PBT / 9 : PBT/PC
- CKT (02,03,04 ...)



35	38.1	40	3515515 **	35155-15**	15
32.5	35.6	37.5	14 **	-14**	14
30	33.1	35	13 **	-13**	13
27.5	30.6	32.5	12 **	-12**	12
25	28.1	30	11 **	-11**	11
22.5	25.6	27.5	10 **	-10**	10
20	23.1	25	09 **	-09**	9
17.5	20.6	22.5	08 **	-08**	8
15	18.1	20	07 **	-07**	7
12.5	15.6	17.5	06 **	-06**	6
10	13.1	15	05 **	-05**	5
7.5	10.6	12.5	04 **	-04**	4
5	8.1	10	03 **	-03**	3
2.5	5.6	7.5	3515502 **	35155-020*	2
C	B	A	MATERIAL NO.	ENG NO.	CKT.



REVISED IEC NO: KOR2008-0103 DRWNS: HAN01 2007/12/13 CHYKSHY YANG 2007/12/13 APPR: TUNSIKKIM 2007/12/13 REV DESCRIPTION	QUALITY SYMBOLS	GENERAL TOLERANCES (UNLESS SPECIFIED)	DIMENSION STYLE IN/MM	SCALE 5:1	DESIGN UNITS METRIC	THIRD ANGLE PROJECTION	
	4 PLACES ± --- ± --- 3 PLACES ± --- ± --- 2 PLACES ± --- ± --- 1 PLACE ± 0.1 ± ---	mm INCH ANGULAR ± 1°	DRAWN BY SK.HAN DATE 2007/12/13 CHECKED BY WY.YANG DATE 2007/12/13 APPROVED BY EH.JUNG DATE 2007/12/13	TITLE	2.5 PITCH W/B CONN. HOUSING		
	DRAFT WHERE APPLICABLE MUST REMAIN WITHIN DIMENSIONS		MATERIAL NO. SEE TABLE	MOLEX INCORPORATED			
			SIZE A3	DOCUMENT NO. SD-35155-***0*		SHEET NO. 1 OF 1	
	THIS DRAWING CONTAINS INFORMATION THAT IS PROPRIETARY TO MOLEX INCORPORATED AND SHOULD NOT BE USED WITHOUT WRITTEN PERMISSION						