

PLEASE CHECK WWW.MOLEX.COM FOR LATEST PART INFORMATION

Part Number: [0351500410](#)
Status: **Active**
Overview: [versablade](#)
Description: 6.20mm (.244") Pitch Wire-to-Wire VersaBlade™ Hybrid Plug Housing, with Mounting Ears, 4 Circuits, Polyester UL94V-0, Natural

Documents:

[3D Model](#) [RoHS Certificate of Compliance \(PDF\)](#)
[Drawing \(PDF\)](#)

Agency Certification

CSA	LR19980
TUV	R72090206
UL	E29179

General

Product Family	Crimp Housings
Series	35150
Comments	Polarized to Mating Part, Positive Lock
Overview	versablade
Product Name	VersaBlade™

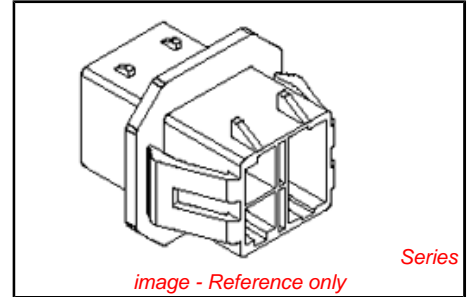
Physical

Circuits (maximum)	4
Color - Resin	Natural
Flammability	94V-0
Gender	Female
Glow-Wire Compliant	No
Keying to Mating Part	None
Lock to Mating Part	Yes
Material - Resin	Polyester
Number of Rows	2
Packaging Type	Bag
Panel Mount	Yes
Pitch - Mating Interface (in)	0.287 In
Pitch - Mating Interface (mm)	7.30 mm
Polarized to Mating Part	Yes
Stackable	No
Temperature Range - Operating	-40°C to +120°C

Material Info

Reference - Drawing Numbers

Sales Drawing [SD-35150-0410](#)



EU RoHS

ELV and RoHS Compliant
REACH SVHC
 Not Reviewed
Halogen-Free Status
 Not Reviewed

China RoHS



Need more information on product environmental compliance?

Email productcompliance@molex.com
 For a multiple part number RoHS Certificate of Compliance, [click here](#)

Please visit the [Contact Us](#) section for any non-product compliance questions.

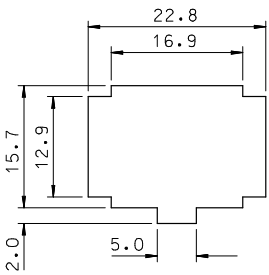
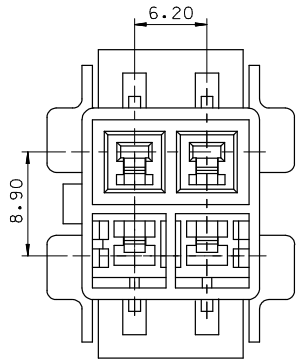
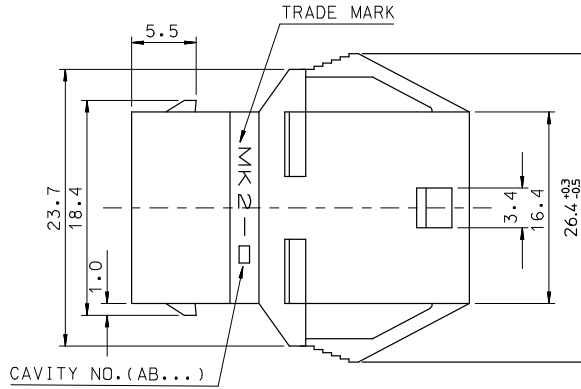
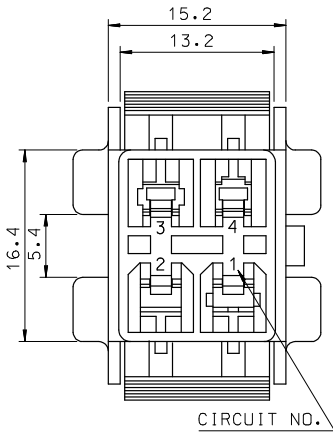
Search Parts in this Series
[35150Series](#)

Mates With
[35151-041*](#) Plug Housings

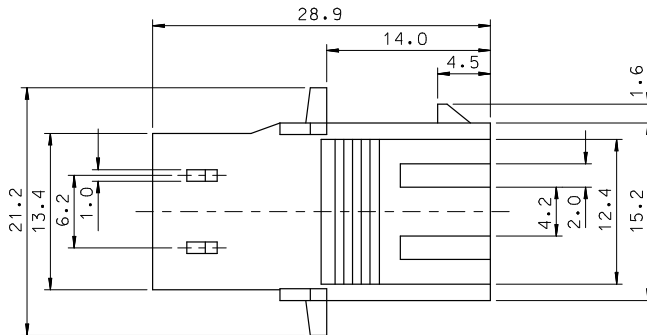
Use With
 VersaBlade™ Crimp Terminals, [35745](#) ,
[35747](#) , [35746](#) , [35748](#) . [351500290](#) TPA™

PLEASE CHECK WWW.MOLEX.COM FOR LATEST PART INFORMATION

10 9 8 7 6 5 4 3 2 1



PANEL HOLE DIMENSION



NOTES

1. MATERIAL : SEE TABLE
2. MATED HOUSING: 35151-041*
3. APPLICABLE TERMINAL: 35745-**** (1CKT)
35746-**** (3CKT)
35747-**** (2CKT)
35748-**** (4CKT)
4. APPLICABLE T.P.A: 35150-0290

NO	PRODUCT		MATERIAL	
	PART NO	MATERIAL NO	COLOR	DESCRIPTION
1	35150-0410	351500410	NATURAL	PBT (UL94V-0)
2	35150-0412	351500412	RED	
3	35150-0414	351500414	BLUE	
4	35150-0419	351500419	NATURAL	PBT/PC (UL94V-0)
5	35150-3419	351503419	YELLOW	
6	35150-4419	351504419	BLUE	

REVISED	EC NO: KOR2008-0179	2008/04/29
	TORWNSKHAN01	2008/04/29
	CHYCHWY YANG	2008/04/29
	APPR: TUNSIKKIM	2008/04/29
REV	DESCRIPTION	QUALITY SYMBOLS

GENERAL TOLERANCES (UNLESS SPECIFIED)		
	mm	INCH
4 PLACES	± 0.3	± 0.012
3 PLACES	± 0.2	± 0.008
2 PLACES	± 0.1	± 0.004
1 PLACE	± 0.1	± 0.004
ANGULAR ± 1°		
DRAFT WHERE APPLICABLE MUST REMAIN WITHIN DIMENSIONS		

DIMENSION STYLE	
SCALE	DESIGN UNITS
2:1	METRIC
THIRD ANGLE PROJECTION	
DRAWN BY	DATE
WY. YANG	1993/08/19
CHECKED BY	DATE
BK. CHOI	1993/08/19
APPROVED BY	DATE
CW. LEE	1993/08/19
MATERIAL NO.	SEE TABLE

TITLE		6.2 PITCH W/W MALE HOUSING-4P (EAR)	
MOLEX INCORPORATED		SD-35150-0410	
DOCUMENT NO.		SHEET NO.	
		1 OF 01	

9 8 7 6 5 4 3 2 1