

ENG. NO
SD 35150-039*

EDP. NO.

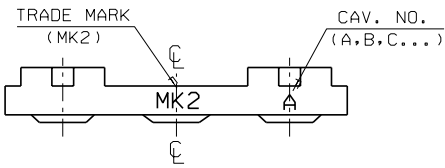
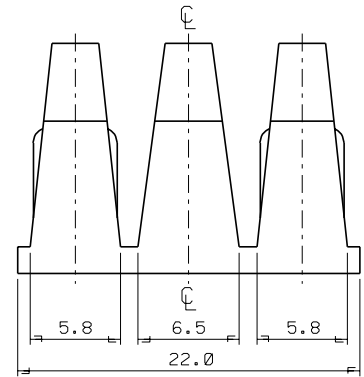
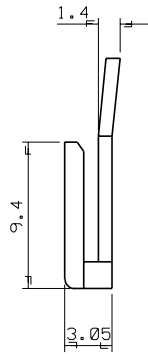
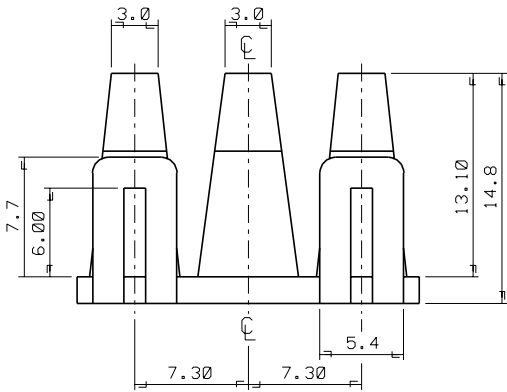
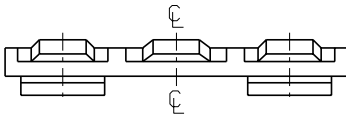
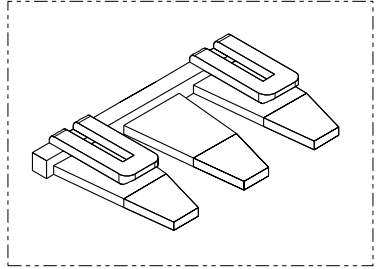
SIMILAR ITEM

PROJECT NO.
.070 W/W CONN'

8 7 6 5 4 3 2 1

NOTES

1. MATERIAL : NYLON 66 (UL94V-2)
2. COLOR : 35150-0390 (NATURAL)
35150-0392 (RED)
35150-0393 (YELLOW)
35150-0394 (BLUE)
3. MATCHED HOUSING : 35150-030*/031*
35151-031*
35150-060*/061*
35151-061*



				MATERIAL SEE NOTES		molex MOLEX-KOREA CO.,LTD.	
				GENERAL TOLERANCE		DRAWN BY J.S.KANG	
				DIMENSION : +0.3		CHK'D BY	
				ANGLE : +1°		SCALE 4/1	
B	REVISED	95.127	95.11.22	DIMENSION CLASSIFICATION		APPR'D BY	
A	NEW RELEASED		92.9.14	▽ : CRITICAL ▼ : MAJOR		TITLE: 7.3 PITCH W/W CONN'	
LTR	REVISION RECORD	ECN	DATE	1 : REFERENCE		T,P,A - 3P	
				ASS'Y PART		SHEET 1 OF 1	
				DESCRIPTION ENG. NO.		REV B	
REVISE ONLY ON CAD SYSTEM				---		ENG. NO. SD 35150-039*	

S1500390.DGN

THIS DRAWING CONTAINS INFORMATION THAT IS PROPRIETARY TO MOLEX(KOREA) AND SHOULD NOT BE USED WITHOUT WRITTEN PERMISSION MX-A3(ANSI:290,420)