

**PLEASE CHECK WWW.MOLEX.COM FOR LATEST PART INFORMATION**

**Part Number:** [0351500290](#)  
**Status:** **Active**  
**Overview:** [versablade](#)  
**Description:** 1.78mm (.070") Tab Wire-to-Wire TPA™, 6.20mm (.244") Pitch, 2 Circuits, White

**Documents:**

<a href="#">3D Model</a>	<a href="#">Product Specification PS-35524-001 (PDF)</a>
<a href="#">Drawing (PDF)</a>	<a href="#">RoHS Certificate of Compliance (PDF)</a>
<a href="#">Product Specification PS-35150-001 (PDF)</a>	

**Agency Certification**

CSA	LR19980
TUV	R72090206
UL	E29179

**General**

Product Family	Accessories
Series	<a href="#">35150</a>
Comments	35150 VersaBlade™ Hybrid Receptacle Housing, <a href="#">35151</a>
Component Type	Retainer
Overview	<a href="#">versablade</a>
Product Name	VersaBlade™

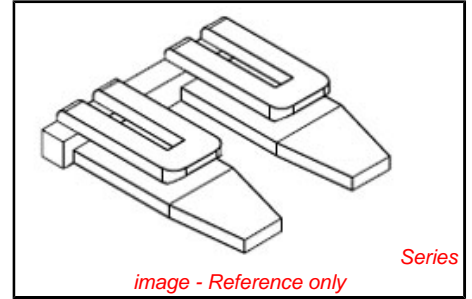
**Physical**

Circuits (Loaded)	2
Color - Resin	Natural
Flammability	94V-0
Lock to Mating Part	Yes
Material - Resin	Nylon
Number of Rows	1
Packaging Type	Bag
Temperature Range - Operating	-40°C to +120°C

**Material Info**

**Reference - Drawing Numbers**

Product Specification	PS-35150-001, PS-35524-001
Sales Drawing	SD-35150-029*



**EU RoHS**

**ELV and RoHS Compliant**  
**REACH SVHC Contains SVHC: No**  
**Halogen-Free Status**  
**Halogen-Free**

**China RoHS**



**Need more information on product environmental compliance?**

Email [productcompliance@molex.com](mailto:productcompliance@molex.com)  
 For a multiple part number RoHS Certificate of Compliance, [click here](#)

Please visit the [Contact Us](#) section for any non-product compliance questions.

**Search Parts in this Series**  
[35150Series](#)

**Use With**  
[35150 VersaBlade™ Hybrid Receptacle Housing, 35151](#)

**PLEASE CHECK WWW.MOLEX.COM FOR LATEST PART INFORMATION**

ENG. NO.  
SD 35150-029\*

EDP NO.

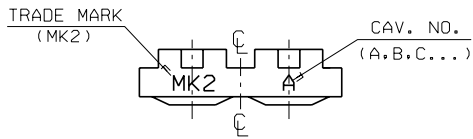
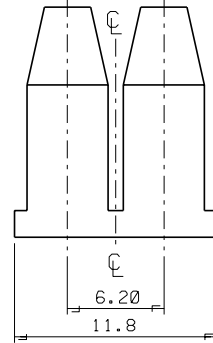
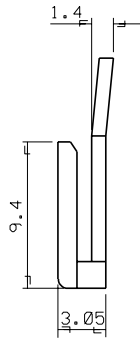
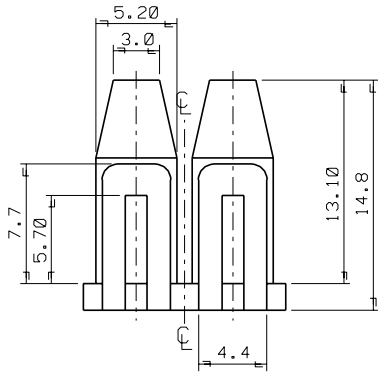
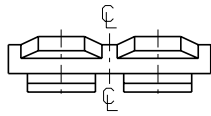
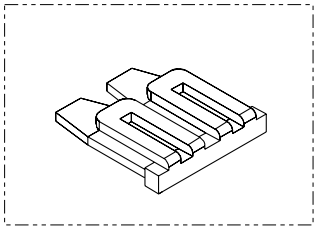
SIMILAR ITEM

PROJECT NO.  
-070 W/W CONN'

8 7 6 5 4 3 2 1

NOTES

1. MATERIAL : NYLON 66 (UL94V-2)
2. COLOR : 35150-0290 (NATURAL)  
35150-0292 (RED)  
35150-0293 (YELLOW)  
35150-0294 (BLUE)
3. MATCHED HOUSING : 35150-020\*/021\*  
35151-021\*  
35150-040\*/041\*  
35151-041\*



				MATERIAL SEE NOTES		molex MOLEX-KOREA CO.,LTD.	
				GENERAL TOLERANCE DIMENSION : +0.3		DRAWN BY J.S.KANG	
				ANGLE : +1°		CHK'D BY	
				DIMENSION CLASSIFICATION		SCALE 4/1	
				▽ : CRITICAL ▼ : MAJOR		TITLE :	
A NEW RELEASED				95 3.10		6.2 PITCH W/W CONN'	
LTR REVISION RECORD ECN DATE				ASS'Y PART		T.P.A - 2P	
REVISION RECORD ECN DATE				DESCRIPTION ENG. NO.		SHEET 1 OF 1	
REVISE ONLY ON CAD SYSTEM				---		ENG. NO. SD 35150-029*	
				---		REV A	

THIS DRAWING CONTAINS INFORMATION THAT IS PROPRIETARY TO MOLEX(KOREA) AND SHOULD NOT BE USED WITHOUT WRITTEN PERMISSION MX-A3(ANSI:Z90,420)

S1500290.DGN