

**PLEASE CHECK WWW.MOLEX.COM FOR LATEST PART INFORMATION**

**Part Number:** [0351500100](#)  
**Status:** **Active**  
**Overview:** [versablade](#)  
**Description:** .070mm (.003") Pitch Wire-to-Wire VersaBlade™ Hybrid Receptacle Housing, without Mounting Ears, 1 Circuit, Polyester UL94V-0, Natural

**Documents:**

[3D Model](#) [RoHS Certificate of Compliance \(PDF\)](#)  
[Drawing \(PDF\)](#)

**Agency Certification**

CSA	LR19980
TUV	R72090206
UL	E29179

**General**

Product Family	Crimp Housings
Series	<a href="#">35150</a>
Comments	Polarized to Mating Part, Positive Lock
Overview	<a href="#">versablade</a>
Product Name	VersaBlade™

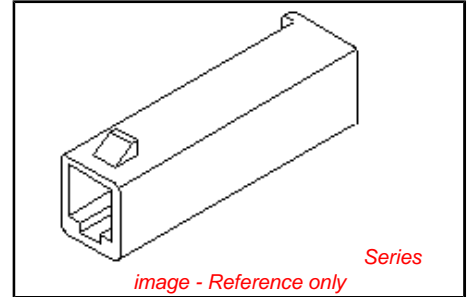
**Physical**

Breakaway	No
Circuits (maximum)	1
Color - Resin	Natural
Flammability	94V-0
Gender	Male
Glow-Wire Compliant	No
Keying to Mating Part	None
Lock to Mating Part	Yes
Material - Resin	Polyester
Number of Rows	1
Packaging Type	Bag
Panel Mount	No
Pitch - Mating Interface (in)	0.000 In
Pitch - Mating Interface (mm)	0.00 mm
Polarized to Mating Part	Yes
Stackable	No
Temperature Range - Operating	-40°C to +105°C

**Material Info**

**Reference - Drawing Numbers**

Sales Drawing	SD-35150-0100
---------------	---------------



**EU RoHS**  
**ELV and RoHS**  
**Compliant**  
**REACH SVHC**  
 Not Reviewed  
**Halogen-Free**  
**Status**  
**Not Reviewed**

**China RoHS**



**Need more information on product environmental compliance?**

Email [productcompliance@molex.com](mailto:productcompliance@molex.com)  
 For a multiple part number RoHS Certificate of Compliance, [click here](#)

Please visit the [Contact Us](#) section for any non-product compliance questions.

**Search Parts in this Series**  
[35150Series](#)

**Mates With**  
[35151-0110 Plug Housing](#)

**Use With**  
[357450\\*10 VersaBlade™ Crimp Terminals](#)

**PLEASE CHECK WWW.MOLEX.COM FOR LATEST PART INFORMATION**

10 9 8 7 6 5 4 3 2 1

F

E

D

C

B

A

F

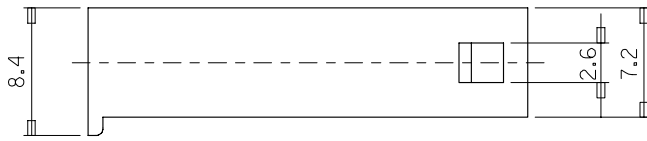
E

D

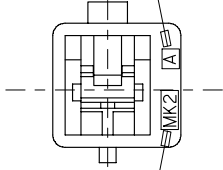
C

B

A



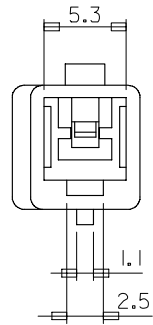
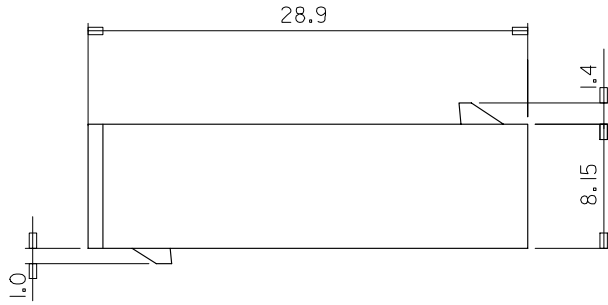
CAV. NO. (A, B..)



TRADE MARK  
(MK2)

NOTES

1. MATERIAL & COLOR : SEE TABLE
2. MATING HOUSING: 35151-0110
3. APPLICABLE TERMINAL: 35745-0\*10
4. APPLICABLE TPA: 35182-019\*



NO	PRODUCT		MATERIAL	
	PART NO	MATERIAL NO	COLOR	DESCRIPTION
1	35150-0100	351500100	NATURAL	PBT
2	35150-0102	351500102	RED	(UL94V-0)
3	35150-0104	351500104	BLUE	
4	35150-0109	351500109	NATURAL	PBT/PC

REVISED  
EC NO: KOR2008-0048  
DRAWN: JHPARK01 2007/09/10  
CHKD: WYANG 2007/09/10  
APPR: TUNSIKIM 2007/09/10

QUALITY SYMBOLS  
▽=0  
▽=0

GENERAL TOLERANCES (UNLESS SPECIFIED)

	mm	INCH
4 PLACES	± .005	± .0002
3 PLACES	± .008	± .0003
2 PLACES	± .015	± .0006
1 PLACE	± 0.3	± .0118
ANGULAR ± 1 °		

DRAFT WHERE APPLICABLE MUST REMAIN WITHIN DIMENSIONS

DIMENSION STYLE  
MM ONLY

DRAWN BY  
WY. YANG

CHECKED BY  
BK. CHOI

APPROVED BY  
CW. LEE

MATERIAL NO.  
SEE TABLE

SCALE  
4:1

DESIGN UNITS  
METRIC

THIRD ANGLE PROJECTION

TITLE  
.070 W/W RECEPTACLE HSG-1P

MOLEX INCORPORATED

DOCUMENT NO.  
SD-35150-0100

SHEET NO.  
1 OF 01

THIS DRAWING CONTAINS INFORMATION THAT IS PROPRIETARY TO MOLEX INCORPORATED AND SHOULD NOT BE USED WITHOUT WRITTEN PERMISSION

9 8 7 6 5 4 3 2 1