

**PLEASE CHECK WWW.MOLEX.COM FOR LATEST PART INFORMATION**

**Part Number:** [0350729702](#)  
**Status:** **Active**  
**Description:** MP-Lock™ Quick Disconnect, Female, for 18-22 AWG (0.80-0.33mm²), Metal Strip, Tab 6.35 by 0.80mm (.250 by .031"), Pre-Tin Plated

**Documents:**

[Drawing \(PDF\)](#) [RoHS Certificate of Compliance \(PDF\)](#)  
[Product Specification PS-35960-001 \(PDF\)](#)

**Agency Certification**

CSA LR95446  
 UL E92853

**General**

Product Family Quick Disconnects  
 Series [35072](#)  
 Crimp Quality Equipment Yes  
 Product Name MP-Lock™  
 Type Quick Disconnect

**Physical**

Barrel Type Open  
 Gender Female  
 Glow-Wire Compliant No  
 Insulation None  
 Lock to Mating Part Yes  
 Material - Metal Brass  
 Material - Plating Mating Tin  
 Material - Plating Termination Tin  
 Orientation Straight  
 Packaging Type Reel  
 Plating min: Mating (µin) 32.00  
 Plating min: Mating (µm) 0.800  
 Plating min: Termination (µin) 32.00  
 Plating min: Termination (µm) 0.80  
 Polarized to Mating Part Yes  
 Tab Thickness 0.81mm (.032")  
 Tab Width 6.35mm (.250")  
 Temperature Range - Operating -40°C to +105°C  
 Termination Interface: Style Crimp or Compression  
 Wire Insulation Diameter 1.50-3.20mm (.060-.125") max.  
 Wire Size AWG 18, 20, 22  
 Wire Size mm² 0.33 - 0.80

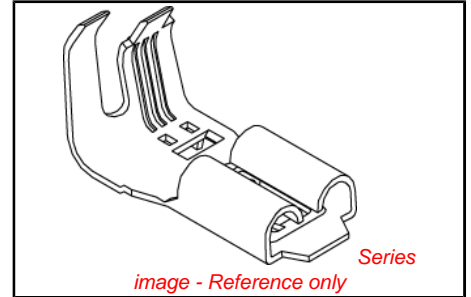
**Electrical**

Voltage - Maximum 300V

**Material Info**

**Reference - Drawing Numbers**

Product Specification PS-35960-001  
 Sales Drawing SD-35072-9702



**EU RoHS**

**ELV and RoHS Compliant**  
**REACH SVHC Contains SVHC: No**  
**Halogen-Free Status**

**China RoHS**



**Need more information on product environmental compliance?**

Email [productcompliance@molex.com](mailto:productcompliance@molex.com)  
 For a multiple part number RoHS Certificate of Compliance, [click here](#)

Please visit the [Contact Us](#) section for any non-product compliance questions.

**Search Parts in this Series**

[35072Series](#)

**Use With**

[35196](#) , [35959](#)

**Application Tooling | FAQ**

*Tooling specifications and manuals are found by selecting the products below. Crimp Height Specifications are then contained in the Application Tooling Specification document.*

**Global**

| Description                                      | Product #                  |
|--|----------------------------|
| Hand Crimp Tool for .250 MP-Lock Crimp Terminals | <a href="#">0638196300</a> |
| Extraction Tool for MP-Lock™ Quick Disconnect    | <a href="#">0638135500</a> |

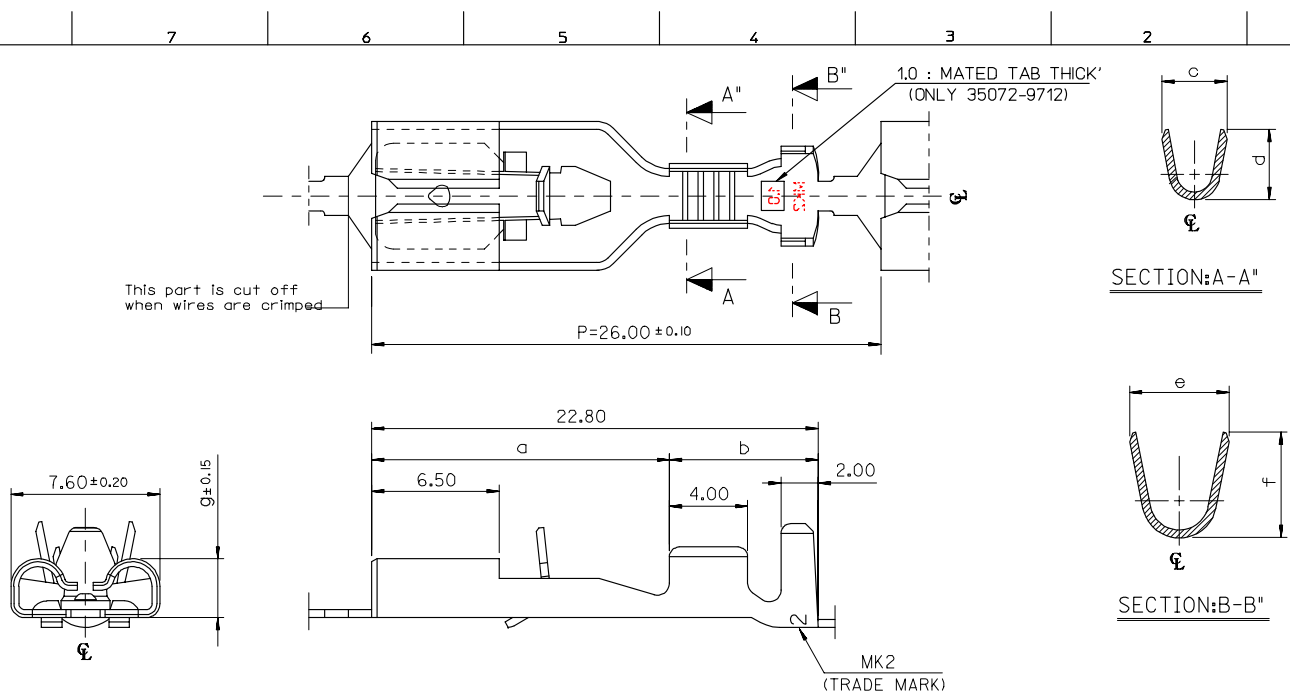
**Japan**

| Description         | Product #                  |
|---------------------|----------------------------|
| End-Feed Applicator | <a href="#">0573693100</a> |

This document was generated on 04/15/2010

**PLEASE CHECK [WWW.MOLEX.COM](http://WWW.MOLEX.COM) FOR LATEST PART INFORMATION**

DWG. NO. SD-35072-9702  
 PROJECT NO. SD-35072-9702  
 SIMILAR ITEM  
 DO NOT SCALE DRAWING DIMENSION IN METRIC



| ENG.NO.    | a    | b   | c   | d   | e   | f   | g    | WIRE SIZE | INSUL.DIA. | MATING TAB THICK' |
|------------|------|-----|-----|-----|-----|-----|------|-----------|------------|-------------------|
| 35072-9702 | 15.1 | 7.7 | 2.6 | 3.2 | 4.8 | 4.8 | 2.92 | AWG#22-18 | 1.5-3.1    | 0.8 t             |
| 35072-9802 | 15.1 | 7.7 | 3.7 | 3.6 | 5.0 | 5.5 |      | AWG#18-14 | 2.2-3.4    |                   |
| 35072-9902 | 14.4 | 8.4 | 4.6 | 5.4 | 6.8 | 6.2 |      | AWG#14-10 | 3.0-5.1    |                   |
| 35072-9712 | 15.1 | 7.7 | 2.6 | 3.2 | 4.8 | 4.8 | 3.00 | AWG#22-18 | 1.5-3.1    | 1.0 t             |

- NOTES
- MATERIAL: TIN-PLATED BRASS 0.4mm THICK'
  - APPLICABLE HOUSING: 35196-0110
  - MATING TAB WIDTH : 6.35mm

|   |  |  |    |  |  |  |  |                                  |                       |     |
|---|--|--|----|--|--|--|--|----------------------------------|-----------------------|-----|
| REDRAWN<br>ECN NO. KOR2006-0031<br>DRWN: JBJUN 05/08/20<br>CHK: W.Y.YANG<br>APPR: C.W.LEE | QUALITY SYMBOLS<br>MAJOR = 0<br>CRITICAL = 0 | GENERAL TOLERANCES: (UNLESS SPECIFIED) |    | SCALE 5:1  | DESIGN UNITS<br><input checked="" type="checkbox"/> mm <input type="checkbox"/> INCH | THIRD ANGLE PROJECTION   | DIMENSIONS:<br><input type="checkbox"/> mm <input type="checkbox"/> INCH <input checked="" type="checkbox"/> mm ONLY |                                  | SHT                   | REV |
|   |  | 4 PLACES ±0.                           | ±- | DRAWN BY & DATE<br>W.Y.YANG 96/03/19                 | TITLE:<br>.250 MP-LOCK<br>RECEPTACLE TERMINAL  |  | <input type="checkbox"/> INCH <input type="checkbox"/> mm  | <input type="checkbox"/> mm ONLY | REVISE ON<br>CAD ONLY |     |
|   |  | 3 PLACES ±0.                           | ±- | CHECKED BY & DATE<br>B.K.CHOI 96/03/19               | MOLEX INCORPORATED   |  |  |                                  |                       |     |
|   |  | 2 PLACES ±0.30                         | ±- | APPROVED BY & DATE<br>C.W.LEE 96/03/19               | CAD FILENAME<br>W.Y.YANG 93/03/19  | MATERIAL NO.<br>SEE TABLE  | DRAWING NO.<br>SD-35072-9702   | SHEET NO.<br>1 OF 1              | SIZE<br>B             |     |
| 1 PLACE ±0.30   | ±-   | ANGULAR: ± 1 °                         |    | DRAFT WHERE APPLICABLE MUST REMAIN WITHIN DIMENSIONS |  | THIS DRAWING CONTAINS INFORMATION THAT IS PROPRIETARY TO MOLEX INCORPORATED AND SHOULD NOT BE USED WITHOUT WRITTEN PERMISSION. |  | KOREA                            | MX-A3                 |     |