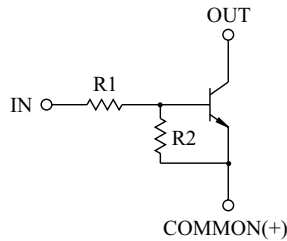


SWITCHING APPLICATION.  
INTERFACE CIRCUIT AND DRIVER CIRCUIT APPLICATION.

### FEATURES

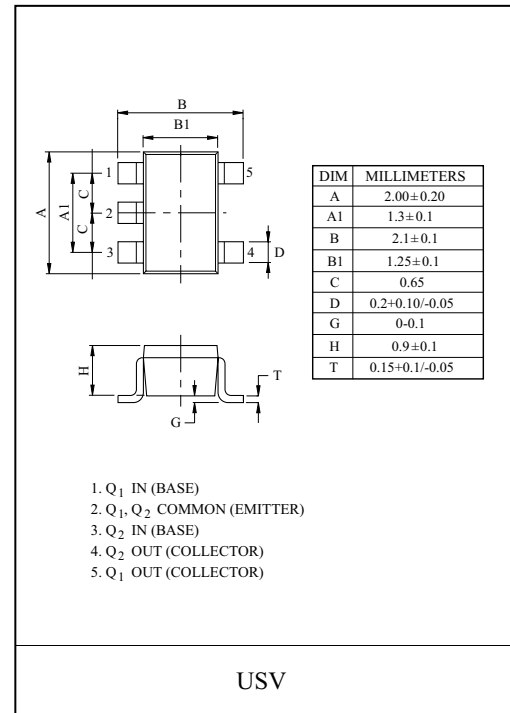
- With Built-in Bias Resistors.
- Simplify Circuit Design.
- Reduce a Quantity of Parts and Manufacturing Process.
- High Packing Density.

### EQUIVALENT CIRCUIT

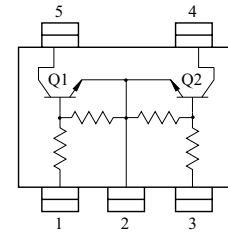


### BIAS RESISTOR VALUES

TYPE NO.	R1(k $\Omega$ )	R2(k $\Omega$ )
KRC657U	10	47
KRC658U	22	47
KRC659U	47	22



### EQUIVALENT CIRCUIT (TOP VIEW)



### MAXIMUM RATING (Ta=25°C)

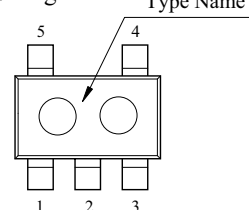
CHARACTERISTIC		SYMBOL	RATING	UNIT
Output Voltage	KRC657U ~659U	V <sub>O</sub>	50	V
Input Voltage	KRC657U	V <sub>I</sub>	30, -6	V
	KRC658U		40, -7	
	KRC659U		40, -15	
Output Current	KRC657U ~659U	I <sub>O</sub>	100	mA
Power Dissipation		P <sub>D</sub> *	200	mW
Junction Temperature		T <sub>j</sub>	150	°C
Storage Temperature Range		T <sub>stg</sub>	-55 ~ 150	°C

\* Total Rating.

### MARK SPEC

TYPE	KRC657U	KRC658U	KRC659U
MARK	NH	NI	NJ

### Marking



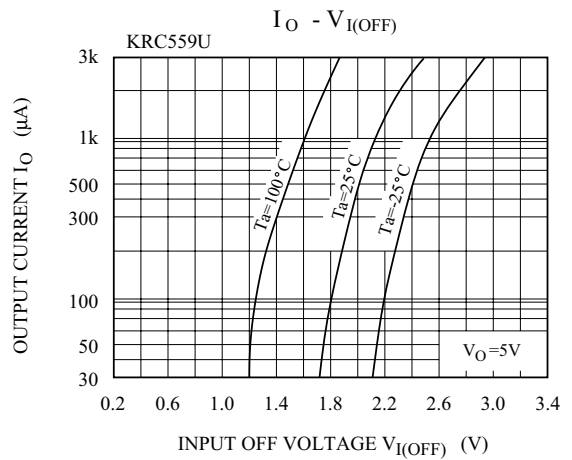
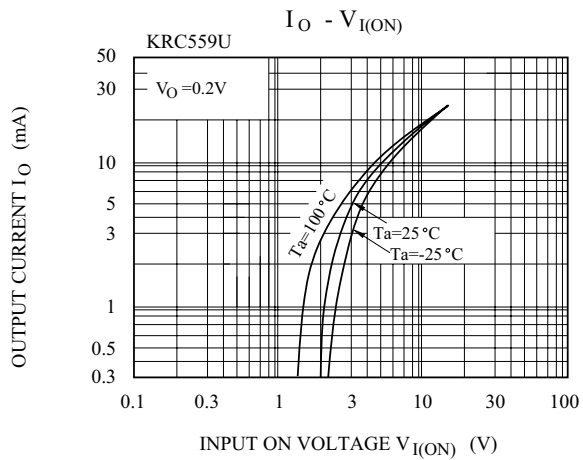
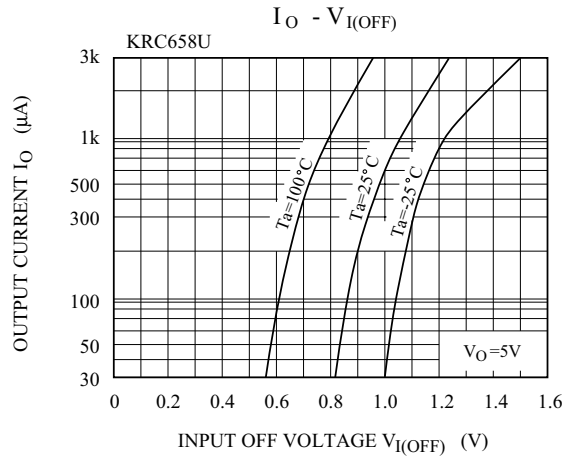
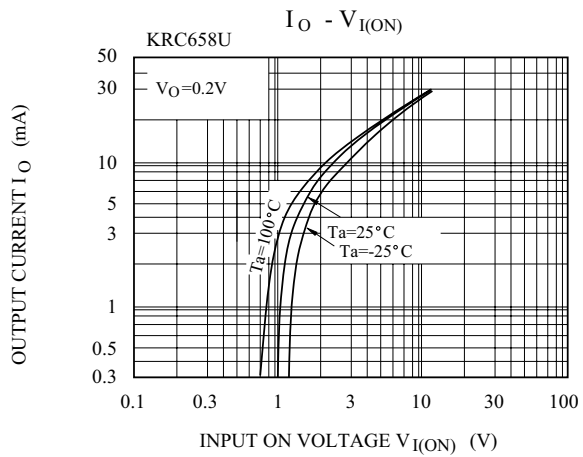
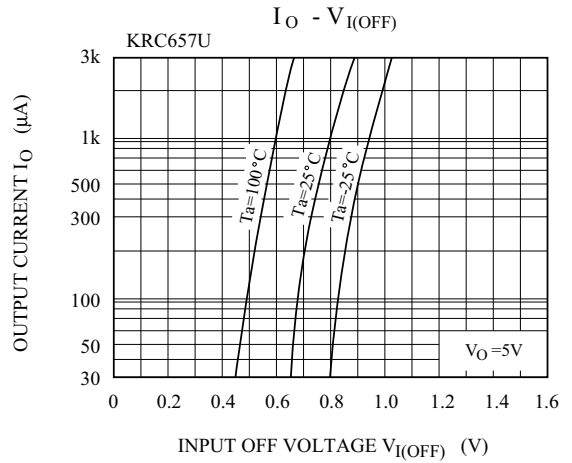
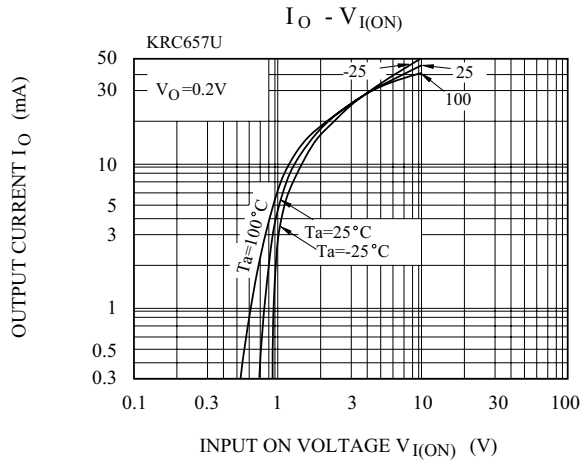
# KRC657U~KRC659U

## ELECTRICAL CHARACTERISTICS (Ta=25 °C)

CHARACTERISTIC		SYMBOL	TEST CONDITION	MIN.	TYP.	MAX.	UNIT	
Output Cut-off Current	KRC657U ~659U	$I_{O(OFF)}$	$V_O=50V, V_I=0$	-	-	500	nA	
DC Current Gain	KRC657U	$G_I$	$V_O=5V, I_O=10mA$	80	150	-		
	KRC658U			80	150	-		
	KRC659U			70	140	-		
Output Voltage	KRC657U ~659U	$V_{O(ON)}$	$I_O=10mA, I_I=0.5mA$	-	0.1	0.3	V	
Input Voltage (ON)	KRC657U	$V_{I(ON)}$	$V_O=0.2V, I_O=5mA$	-	1.2	1.8	V	
	KRC658U			-	1.8	2.6		
	KRC659U			-	3.0	5.8		
Input Voltage (OFF)	KRC657U	$V_{I(OFF)}$	$V_O=5V, I_O=0.1mA$	0.5	0.75	-	V	
	KRC658U			0.6	0.88	-		
	KRC659U			1.5	1.82	-		
Transition Frequency	KRC657U ~659U	$f_T^*$	$V_O=10V, I_O=5mA$	-	200	-	MHz	
Input Current	KRC657U	$I_I$	$V_I=5V$	-	-	0.88	mA	
	KRC658U			-	-	0.36		
	KRC659U			-	-	0.16		
Switching Time	Rise Time	KRC657U	$V_O=5V, V_{IN}=5V$ $R_L=1k\ \Omega$	-	0.05	-	$\mu s$	
		KRC658U		-	0.12	-		
		KRC659U		-	0.26	-		
	Storage Time	KRC657U		$t_{stg}$	-	2.0		-
		KRC658U			-	2.4		-
		KRC659U			-	1.5		-
	Fall Time	KRC657U		$t_f$	-	0.36		-
		KRC658U			-	0.4		-
		KRC659U			-	0.41		-

Note : \* Characteristic of Transistor Only.

# KRC657U~KRC659U



# KRC657U~KRC659U

