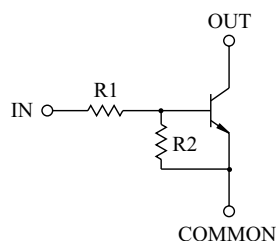


SWITCHING APPLICATION.  
INTERFACE CIRCUIT AND DRIVER CIRCUIT APPLICATION.

#### FEATURES

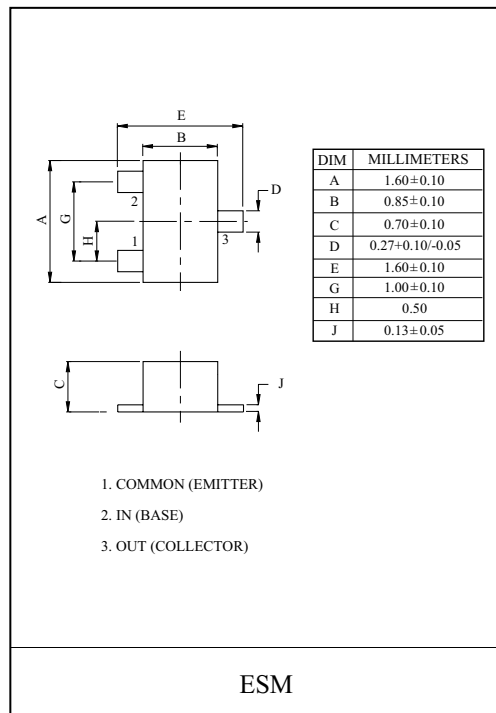
- With Built-in Bias Resistors
- Simplify Circuit Design
- Reduce a Quantity of Parts and Manufacturing Process
- High Packing Density.

#### EQUIVALENT CIRCUIT



#### BIAS RESISTOR VALUES

TYPE NO.	R1(kΩ)	R2(kΩ)
KRC407E	10	47
KRC408E	22	47
KRC409E	47	22

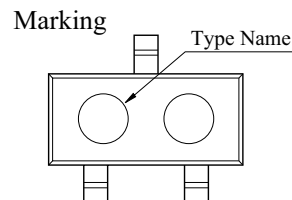


#### MAXIMUM RATING (Ta=25°C)

CHARACTERISTIC		SYMBOL	RATING	UNIT
Output Voltage	KRC407E ~409E	V <sub>O</sub>	50	V
Input Voltage	KRC407E	V <sub>I</sub>	30, -6	V
	KRC408E		40, -7	
	KRC409E		40, -15	
Output Current	KRC407E ~409E	I <sub>O</sub>	100	mA
Power Dissipation		P <sub>D</sub>	100	mW
Junction Temperature		T <sub>j</sub>	150	°C
Storage Temperature Range		T <sub>stg</sub>	-55 ~ 150	°C

#### MARK SPEC

TYPE	KRC407E	KRC408E	KRC409E
MARK	NH	NI	NJ



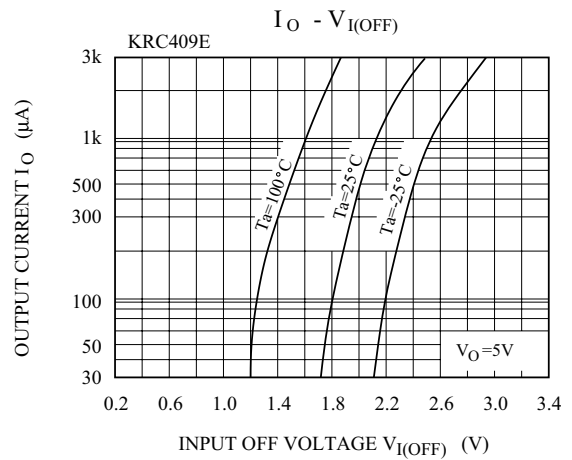
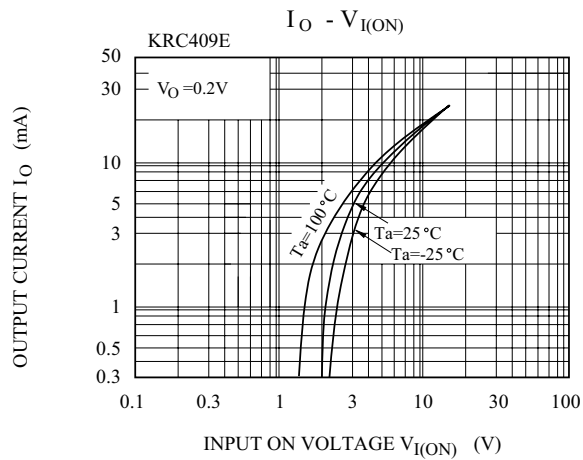
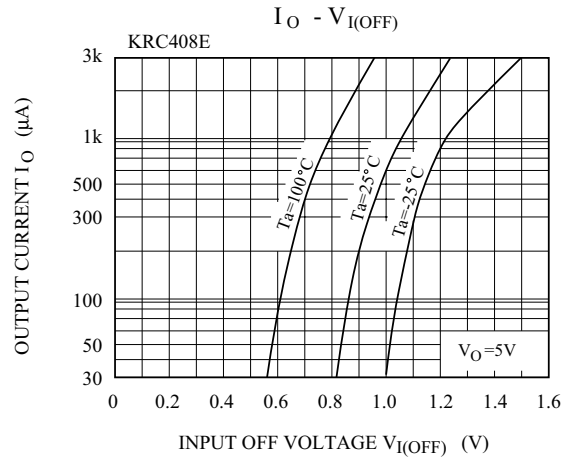
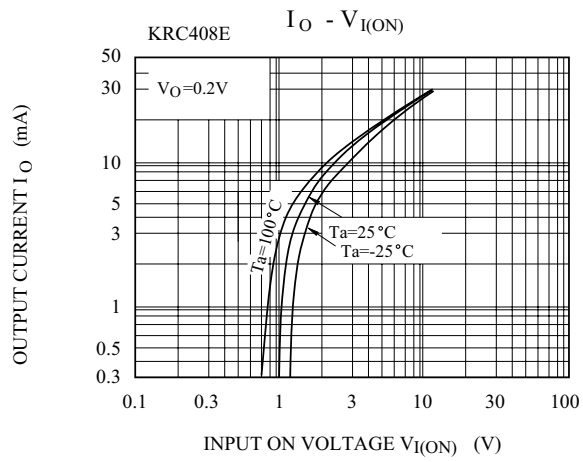
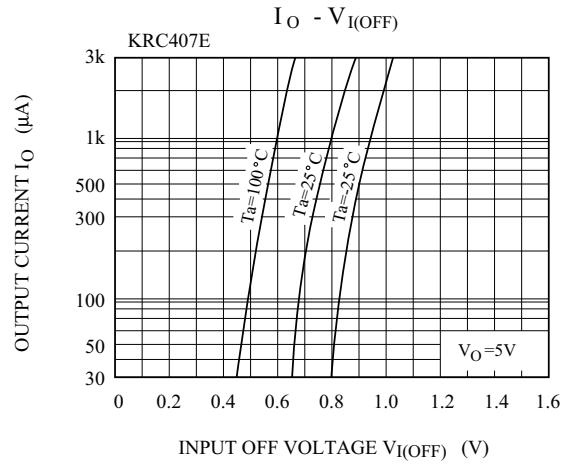
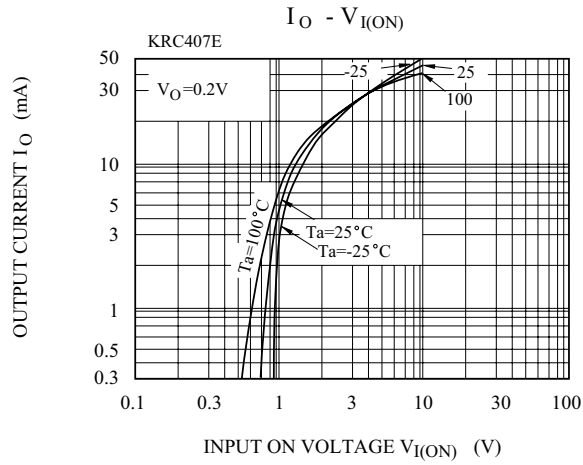
# KRC407E~KRC409E

## ELECTRICAL CHARACTERISTICS (Ta=25 °C)

CHARACTERISTIC		SYMBOL	TEST CONDITION	MIN.	TYP.	MAX.	UNIT		
Output Cut-off Current		KRC407E ~409E	$I_{O(OFF)}$	$V_O=50V, V_I=0$	-	-	500	nA	
DC Current Gain	KRC407E	$G_I$	$V_O=5V, I_O=10mA$	80	150	-			
	KRC408E			80	150	-			
	KRC409E			70	140	-			
Output Voltage		KRC407E ~409E	$V_{O(ON)}$	$I_O=10mA, I_I=0.5mA$	-	0.1	0.3	V	
Input Voltage (ON)	KRC407E	$V_{I(ON)}$	$V_O=0.2V, I_O=5mA$	-	1.2	1.8	V		
	KRC408E			-	1.8	2.6			
	KRC409E			-	3.0	5.8			
Input Voltage (OFF)	KRC407E	$V_{I(OFF)}$	$V_O=5V, I_O=0.1mA$	0.5	0.75	-	V		
	KRC408E			0.6	0.88	-			
	KRC409E			1.5	1.82	-			
Transition Frequency		KRC407E ~409E	$f_T^*$	$V_O=10V, I_O=5mA$	-	200	-	MHz	
Input Current	KRC407E	$I_I$	$V_I=5V$	-	-	0.88	mA		
	KRC408E			-	-	0.36			
	KRC409E			-	-	0.16			
Switching Time	Rise Time	KRC407E	$t_r$	$V_O=5V, V_{IN}=5V$ $R_L=1k\Omega$	-	0.05	-	$\mu s$	
		KRC408E			-	0.12	-		
		KRC409E			-	0.26	-		
	Storage Time	KRC407E			$t_{stg}$	-	2.0		-
		KRC408E				-	2.4		-
		KRC409E				-	1.5		-
	Fall Time	KRC407E			$t_f$	-	0.36		-
		KRC408E				-	0.4		-
		KRC409E				-	0.41		-

Note : \* Characteristic of Transistor Only.

# KRC407E~KRC409E



# KRC407E~KRC409E

