

Model name

PC6-24-5

Series name Output power Input voltage Output voltage

Features

- Input/Output isolation
- 5 dimensions shield metal case
- Over current protection
- Adjustable output voltage
- Remote ON/OFF control (6W type)

PC1R5 (1.5W type) Specifications

Model	PC1R5 -5-3.3	PC1R5 -5-5	PC1R5 -5-12	PC1R5 -12-3.3	PC1R5 -12-5	PC1R5 -12-12	PC1R5 -24-3.3	PC1R5 -24-5	PC1R5 -24-12	PC1R5 -48-3.3	PC1R5 -48-5	PC1R5 -48-12
Input Voltage	5VDC (4.5 ~ 9.0V)			12VDC (9 ~ 18V)			24VDC (18 ~ 36V)			48VDC (36 ~ 72V)		
Output Voltage (*1)	Vdc 3.3V±5%	Vdc 5V±5%	Vdc 12V±5% (15V±5%)	Vdc 3.3V±5%	Vdc 5V±5%	Vdc 12V±5% (15V±5%)	Vdc 3.3V±5%	Vdc 5V±5%	Vdc 12V±5% (15V±5%)	Vdc 3.3V±5%	Vdc 5V±5%	Vdc 12V±5% (15V±5%)
Output Current	mA 0 ~ 400	mA 0 ~ 300	mA 0 ~ 125 (0 ~ 100)	mA 0 ~ 400	mA 0 ~ 300	mA 0 ~ 125 (0 ~ 100)	mA 0 ~ 400	mA 0 ~ 300	mA 0 ~ 125 (0 ~ 100)	mA 0 ~ 400	mA 0 ~ 300	mA 0 ~ 125 (0 ~ 100)
Output Power (max)	W 1.32	W 1.5	W 1.5	W 1.32	W 1.5	W 1.5	W 1.32	W 1.5	W 1.5	W 1.32	W 1.5	W 1.5
Efficiency (typ) (*2)	% 66	% 69	% 71 (70)	% 70	% 73	% 75 (73)	% 70	% 75	% 76 (75)	% 70	% 73	% 76 (75)

PC3 (3W type) Specifications

Model	PC3 -5-3.3	PC3 -5-5	PC3 -5-12	PC3 -12-3.3	PC3 -12-5	PC3 -12-12	PC3 -24-3.3	PC3 -24-5	PC3 -24-12	PC3 -48-3.3	PC3 -48-5	PC3 -48-12
Input Voltage	5VDC (4.5 ~ 9.0V)			12VDC (9 ~ 18V)			24VDC (18 ~ 36V)			48VDC (36 ~ 72V)		
Output Voltage (*1)	Vdc 3.3V±5%	Vdc 5V±5%	Vdc 12V±5% (15V±5%)	Vdc 3.3V±5%	Vdc 5V±5%	Vdc 12V±5% (15V±5%)	Vdc 3.3V±5%	Vdc 5V±5%	Vdc 12V±5% (15V±5%)	Vdc 3.3V±5%	Vdc 5V±5%	Vdc 12V±5% (15V±5%)
Output Current	mA 0 ~ 600	mA 0 ~ 600	mA 0 ~ 250 (0 ~ 200)	mA 0 ~ 600	mA 0 ~ 600	mA 0 ~ 250 (0 ~ 200)	mA 0 ~ 600	mA 0 ~ 600	mA 0 ~ 250 (0 ~ 200)	mA 0 ~ 600	mA 0 ~ 600	mA 0 ~ 250 (0 ~ 200)
Output Power (max)	W 1.98	W 3.0	W 3.0	W 1.98	W 3.0	W 3.0	W 1.98	W 3.0	W 3.0	W 1.98	W 3.0	W 3.0
Efficiency (typ) (*2)	% 65	% 70	% 72 (72)	% 70	% 75	% 77 (77)	% 70	% 75	% 78 (78)	% 70	% 75	% 79 (79)

PC6 (6W type) Specifications

Model	PC6 -5-3.3	PC6 -5-5	PC6 -5-12	PC6 -12-3.3	PC6 -12-5	PC6 -12-12	PC6 -24-3.3	PC6 -24-5	PC6 -24-12	PC6 -48-3.3	PC6 -48-5	PC6 -48-12
Input Voltage	5VDC (4.5 ~ 9.0V)			12VDC (9 ~ 18V)			24VDC (18 ~ 36V)			48VDC (36 ~ 72V)		
Output Voltage (*1)	Vdc 3.3V±5%	Vdc 5V±5%	Vdc 12V±5% (15V±5%)	Vdc 3.3V±5%	Vdc 5V±5%	Vdc 12V±5% (15V±5%)	Vdc 3.3V±5%	Vdc 5V±5%	Vdc 12V±5% (15V±5%)	Vdc 3.3V±5%	Vdc 5V±5%	Vdc 12V±5% (15V±5%)
Output Current	mA 0 ~ 1200	mA 0 ~ 1000	mA 0 ~ 500 (0 ~ 400)	mA 0 ~ 1500	mA 0 ~ 1200	mA 0 ~ 500 (0 ~ 400)	mA 0 ~ 1500	mA 0 ~ 1200	mA 0 ~ 500 (0 ~ 400)	mA 0 ~ 1500	mA 0 ~ 1200	mA 0 ~ 500 (0 ~ 400)
Output Power (max)	W 3.96	W 6.0	W 6.0	W 4.95	W 6.0	W 6.0	W 4.95	W 6.0	W 6.0	W 4.95	W 6.0	W 6.0
Efficiency (typ) (*2)	% 70	% 74	% 78 (78)	% 73	% 77	% 84 (84)	% 77	% 82	% 84 (84)	% 77	% 82	% 85 (85)
Remote ON/OFF control	— Possible (CNT terminal)											

Common specifications

Withstand Voltage	Input to Output: 500VAC for 1 minute
Cooling	Convection cooling
Operating Temperature	-20 ~ +70°C (-20 ~ +50°C: 100%, +60°C: 70%, +70°C: 40%)
Over Current Protection	Output current limiting, automatic recovery. Avoid to operate overload or dead short for more than 30 seconds.
Input Protection	Built in Fuse on input line

(*1) Measured at the maximum output power with rated input voltage (5VDC, 12VDC, 24VDC, 48VDC)
 (*2) At rated input voltage & maximum output power.

On-Board Type Power Supply

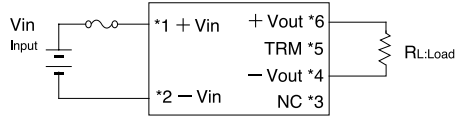
Terminal connection

[PC1R5 (1.5W type) / PC3 (3W type)]

Output voltage can be adjustable by TRM terminal.

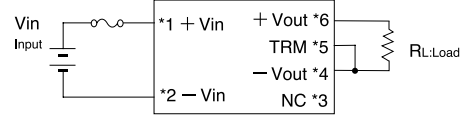
Output power must be within the rating, when increasing the output voltage.

*1 TRM terminal: Open



Type	3.3V type	5V type	12V type
Output voltage	3.3V	5V	12V

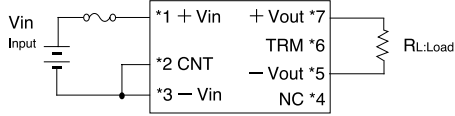
*2 TRM terminal & -Vout terminal: Short



Type	3.3V type	5V type	12V type
Output voltage	3.67V	6V	15V

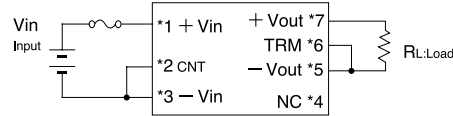
[PC6 (6W type)]

*1 TRM terminal: Open



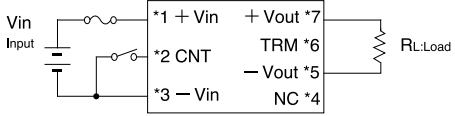
Type	3.3V type	5V type	12V type
Output voltage	3.3V	5V	12V

*2 TRM terminal & -Vout terminal: Short



Type	3.3V type	5V type	12V type
Output voltage	3.67V	6V	15V

*3 CNT terminal: Remote ON/OFF control



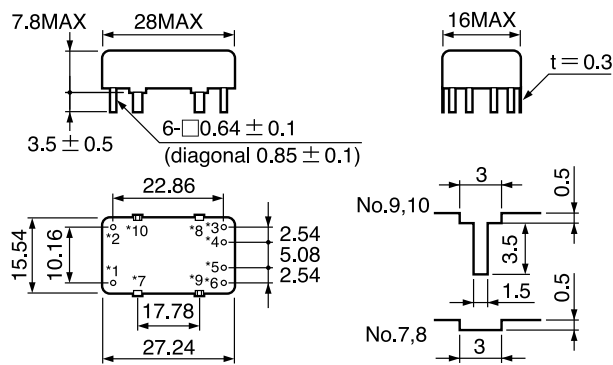
CNT terminal	Output
CNT --Vin: Short or 0 ~ 0.4V	ON
CNT --Vin: Open or 2V ~ Vin	OFF

* Output voltage: Refer to TRM terminal connection

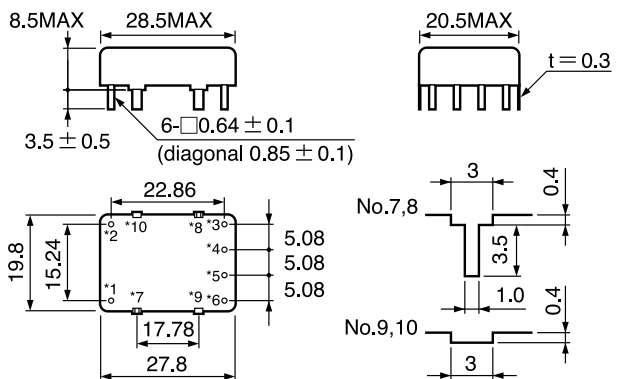
On-Board Type Power Supply

Outline drawing

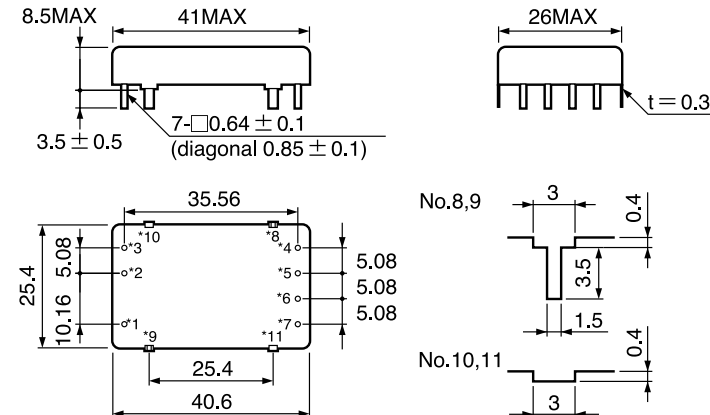
• PC1R5 (1.5W type)



• PC3 (3W type)

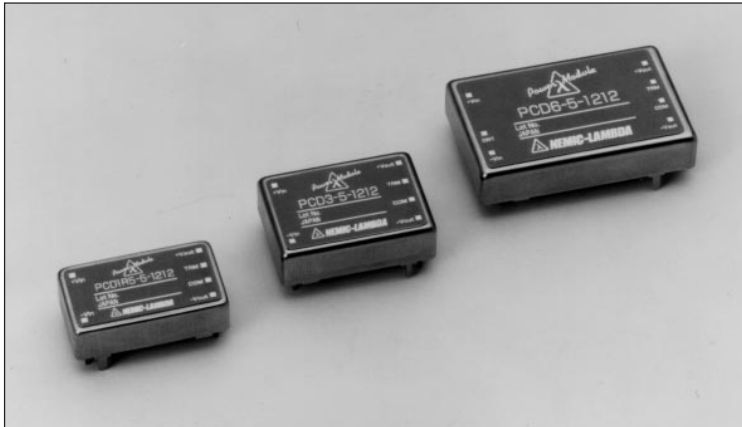


• PC6 (6W type)



(Unit: mm)

Dimension tolerance not designated is ±0.3.



■ Model name

PCD 6 - 24 - 1212

Series name Output power Input voltage Output voltage

■ Features

- Input/Output isolation
- 5 dimensions shield metal case
- Over current protection
- Adjustable output voltage
- Remote ON/OFF control (6W type)

■ PCD1R5 (1.5W type) Specifications

Model		PCD1R5-5-1212		PCD1R5-12-1212		PCD1R5-24-1212		PCD1R5-48-1212	
Input Voltage	Vdc	5VDC (4.5 ~ 9.0V)		12VDC (9 ~ 18V)		24VDC (18 ~ 36V)		48VDC (36 ~ 72V)	
Output Voltage (*1)	Vdc	±12V±5%	±15V±5%	±12V±5%	±15V±5%	±12V±5%	±15V±5%	±12V±5%	±15V±5%
Output Current	mA	0 ~ ±60	0 ~ ±50	0 ~ ±60	0 ~ ±50	0 ~ ±60	0 ~ ±50	0 ~ ±60	0 ~ ±50
Output Power (max)	W	1.44	1.5	1.44	1.5	1.44	1.5	1.44	1.5
Efficiency (typ) (*2)	%	69	67	73	73	75	75	75	75

■ PCD3 (3W type) Specifications

Model		PCD3-5-1212		PCD3-12-1212		PCD3-24-1212		PCD3-48-1212	
Input Voltage	Vdc	5VDC (4.5 ~ 9.0V)		12VDC (9 ~ 18V)		24VDC (18 ~ 36V)		48VDC (36 ~ 72V)	
Output Voltage (*1)	Vdc	±12V±5%	±15V±5%	±12V±5%	±15V±5%	±12V±5%	±15V±5%	±12V±5%	±15V±5%
Output Current	mA	0 ~ ±125	0 ~ ±100	0 ~ ±125	0 ~ ±100	0 ~ ±125	0 ~ ±100	0 ~ ±125	0 ~ ±100
Output Power (max)	W	3.0	3.0	3.0	3.0	3.0	3.0	3.0	3.0
Efficiency (typ) (*2)	%	72	72	77	77	78	78	78	77

■ PCD6 (6W type) Specifications

Model		PCD6-5-1212		PCD6-12-1212		PCD6-24-1212		PCD6-48-1212	
Input Voltage	Vdc	5VDC (4.5 ~ 9.0V)		12VDC (9 ~ 18V)		24VDC (18 ~ 36V)		48VDC (36 ~ 72V)	
Output Voltage (*1)	Vdc	±12V±5%	±15V±5%	±12V±5%	±15V±5%	±12V±5%	±15V±5%	±12V±5%	±15V±5%
Output Current	mA	0 ~ ±250	0 ~ ±200	0 ~ ±250	0 ~ ±200	0 ~ ±250	0 ~ ±200	0 ~ ±250	0 ~ ±200
Output Power (max)	W	6.0	6.0	6.0	6.0	6.0	6.0	6.0	6.0
Efficiency (typ) (*2)	%	75	75	82	82	84	84	82	82

■ Common specifications

Withstand Voltage	Input to Output: 500VAC for 1 minute
Cooling	Convection cooling
Operating Temperature	-20 ~ +70°C (-20 ~ +50°C: 100%, +60°C: 70%: 40%)
Over Current Protection	Output current limiting, automatic recovery. Avoid to operate overload or dead short for more than 30 seconds.
Input Protection	Built in fuse on input line

(*1) Output voltage accuracy includes line and load regulation and temperature drift.

(*2) At rated input voltage & maximum output power.

On-Board Type Power Supply

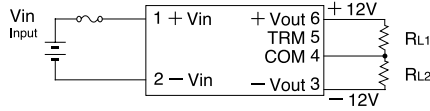
Terminal connection

[PCD1R5 (1.5W type) / PCD3 (3W type)]

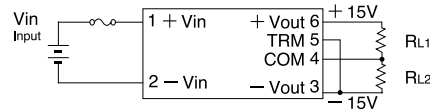
Output voltage can be adjusted by TRM terminals.

Output power must be within the rating, when increasing the output voltage.

*1 TRM terminal: Open
Output: $\pm 12V$

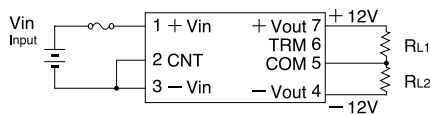


*2 TRM terminal & -Vout terminal: Short
Output: $\pm 15V$

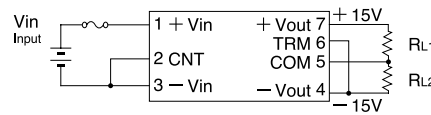


[PCD6 (6W type)]

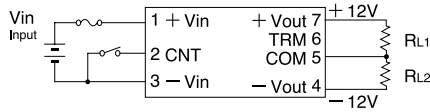
*1 TRM terminal: Open
Output: $\pm 12V$



*2 TRM terminal & -Vout terminal: Short
Output: $\pm 15V$



CNT terminal: Remote ON/OFF control



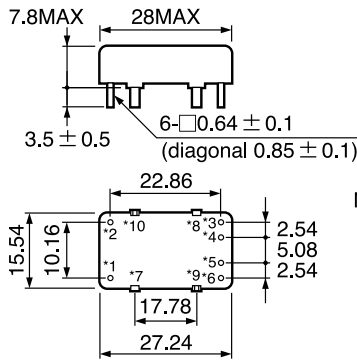
CNT terminal	Output
CNT--Vin: Short or 0 ~ 0.4V	ON
CNT--Vin: Open or 2V ~ Vin	OFF

* Output voltage: Refer to TRM terminal connection

On-Board Type Power Supply

Outline drawing

• PCD1R5 (1.5W type)



• PCD3 (3W type)

