



# TMX W311

SAW Bandpass Filter – PCS1900 Rx – RF  
*Specification (Rev 2)*

▣ Features.....	P01
▣ Package Drawing & Pin out.....	P01
▣ Technical Characteristics .....	P02
▣ Matching Network.....	P02
▣ Nominal Response.....	P03
▣ Maximum Ratings.....	P04
▣ Marking & Packaging .....	P04

# TMX W311

## SAW Bandpass Filter – PCS1900 Rx – RF

Specification (Rev 2)

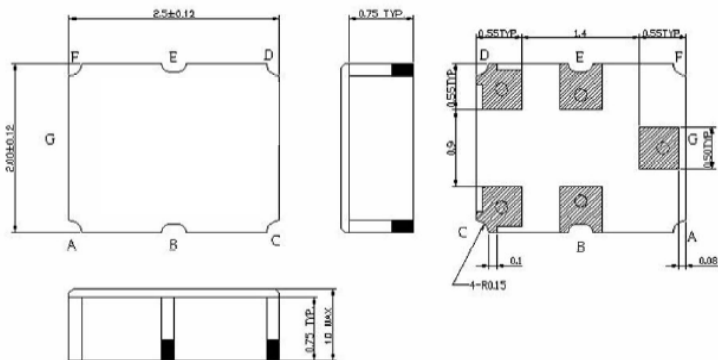
September 25<sup>th</sup>, 2005

### Features

- ❑ Rx Filter for PCS1900
- ❑ 1960 MHz Center Frequency
- ❑ 60 MHz useable Passband
- ❑ 50 W Single Input / 200 W Balanced Output
- ❑ Ceramic Package for Surface Mounted Technology

### Package Drawing & Pin out

The product is in conformance with the European RoHs Regulation 2002/95.



### Pin Configuration

Input	G
Output	C, D
Case ground	B, E

# TMX W311

## SAW Bandpass Filter – PCS1900 Rx – RF

Specification (Rev 2)

September 25<sup>th</sup>, 2005

### Technical Characteristics

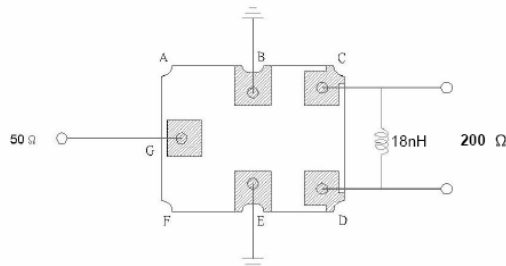
Reference Temperature : +25°C

Electrical Parameters	Unit	Minimum	Typical <sup>(1)</sup>	Maximum
Source Impedance (single ended)	$\Omega$	-	50 <sup>(2)</sup>	-
Load Impedance (balance drive)	$\Omega$	-	200 <sup>(2)</sup>	-
Center Frequency $f_0$	MHz	-	1960	-
Bandwidth at -3 dB	MHz	60	-	-
<b>Absolute attenuation</b>				
DC to 1000 MHz	dB	45	55	-
1000 MHz to 1830 MHz	dB	25	31	-
1830 MHz to 1900 MHz	dB	15	25	-
1900 MHz to 1910 MHz	dB	7	13	-
2010 MHz to 2030 MHz	dB	5	8	-
2030 MHz to 2070 MHz	dB	12	18	-
2070 MHz to 2310 MHz	dB	20	24	-
2310 MHz to 2380 MHz	dB	35	38	-
2380 MHz to 4600 MHz	dB	30	39	-
4600 MHz to 6000 MHz	dB	23	54	-
Insertion Loss within 1930 MHz ~ 1990 MHz	dB	-	2.7	4.0
Input VSWR within 1930 MHz ~ 1990 MHz		-	1.8	2.4
Output VSWR within 1930 MHz ~ 1990 MHz		-	2.0	2.4
Ripple within 1930 MHz ~ 1990 MHz	dB	-	0.6	2.4
<b>Symmetry in band (referenced to the matched operating condition)</b>				
$ S_{31}  /  S_{21} $ within 1930 MHz~1990 MHz	dB	- 2.0	0	1.5
? ( $S_{31}$ ) – ? ( $S_{21}$ ) within 1930 MHz~1990 MHz	°	- 15	0	15

Notes :

- (1) Typical values are nominal performances at room temperature.
- (2) External matching network is required.

### Matching Network



# TMX W311

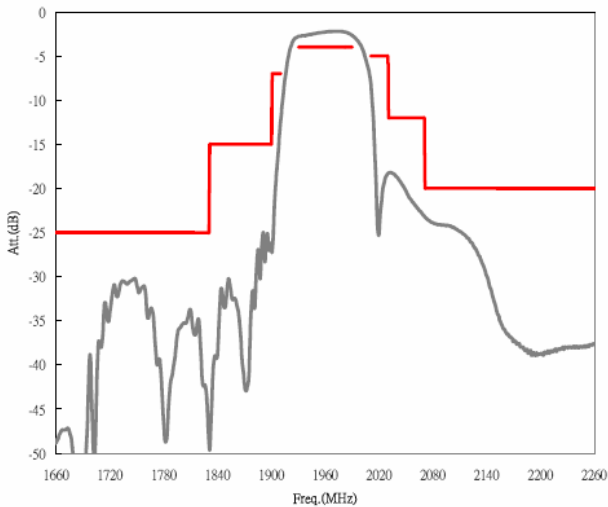
## SAW Bandpass Filter – PCS1900 Rx – RF

Specification (Rev 2)

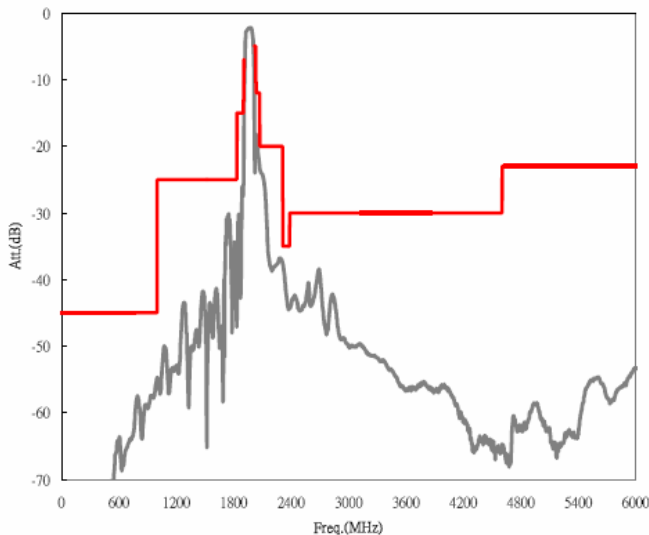
September 25<sup>th</sup>, 2005

**Nominal Frequency Response (Measurements)**

**Frequency Response**



**Frequency Response**



# TMX W311

## SAW Bandpass Filter – PCS1900 Rx – RF

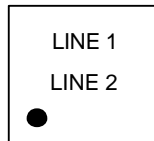
Specification (Rev 2)

September 25<sup>th</sup>, 2005

### Maximum Ratings

Operating Temperature Range	°C	[-25°C ; +75°C]
Storage Temperature Range	°C	[-40°C ; +85°C]

### Marking



Line 1: "P C" with P for the code product identification and C for the partner identifier

Line 2: "Y W" with Y for the last digit of the year and W for the week code (A to Z for the week 1 to 26 and a to z for the week 27 to 52).

### Packaging

1. Temex label
2. ESD Prevention label
3. Pb free label (if applicable)

