

TMX U388

SAW Front-End Filter – European Wireless Receivers - RF
Specification (Rev-3)

■ Technical overview	P01
■ Configuration	P01
■ Typical Response	P02
■ Package Drawing	P03

TMX U388

SAW Front-End Filter - European Wireless Receivers - RF
Specification (Rev-3)

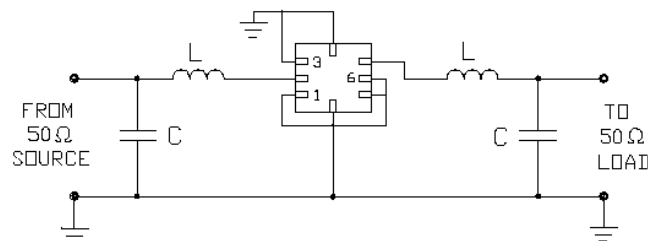
February 08th, 2005

Electrical Parameters	Unit	Minimum	Typical ⁽¹⁾	Maximum
Source Impedance (single ended)	Ω	-	50 ⁽²⁾	-
Load Impedance (single ended)	Ω	-	50 ⁽²⁾	-
Center Frequency f_0	MHz	-	433.92	-
Relative Attenuation				
From 10.0 MHz to 414.0 MHz	dB	45.0	50.0	-
From 414.0 MHz to 428.0 MHz	dB	40.0	45.0	-
From 428 MHz to 432.92 MHz	dB	15.0	20.0	-
<u>FROM 434.92 MHz TO 442.0 MHz</u>	dB	10.0	15.0	-
From 442.0 MHz to 550.0 MHz	dB	35.0	40.0	-
From 550.0 MHz to 1000.0 MHz	dB	45.0	50.0	-
Insertion Loss in 433.80 MHz – 434.12 MHz	dB	-	2.0	3.5
Pass Band				
From 433.76 MHz to 434.16 MHz	dB	-	1.0	2.0
External Impedance Match				
Series Inductance L	nH	-	33	-
Shunt Capacitance C	pF	-	5.6	-
Temperature Coefficient of Frequency	Ppm/K ²	-	-0.03	-
Package type & size				
Length x Width	mm ²	-	5.0 x 5.0	-
Height	mm	-	1.3	1.5
Pin Out				
Input	2	Output	5	
Input Ground	1	Output Ground	6	
Case Ground	1,3,4,6,7,8	To Be Grounded	1,3,4,6,7,8	

Notes :

- (1) Typical values are nominal performances at room temperature
- (2) External matching circuit is required (see drawing below)

50 Ω / 50 Ω Configuration



TMX U388

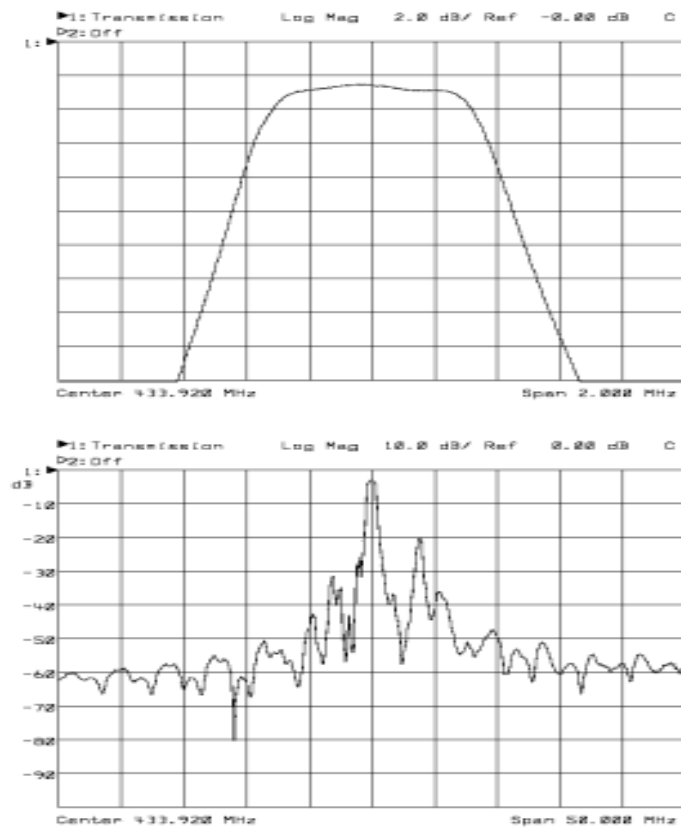
SAW Front-End Filter - European Wireless Receivers - RF Specification (Rev-3)

February 08th, 2005

Maximum Ratings

Rating		Unit	Value
Operating Temperature Range	T_A	-40 to +85	°C
Storage Temperature Range	T_{stg}	-45 to +85	°C
DC Voltage	V_{DC}	10	V
AC Voltage	V_{PP}	10 (50Hz / 60 Hz)	V
Input Power		10	dBm

TYPICAL S21 RESPONSE



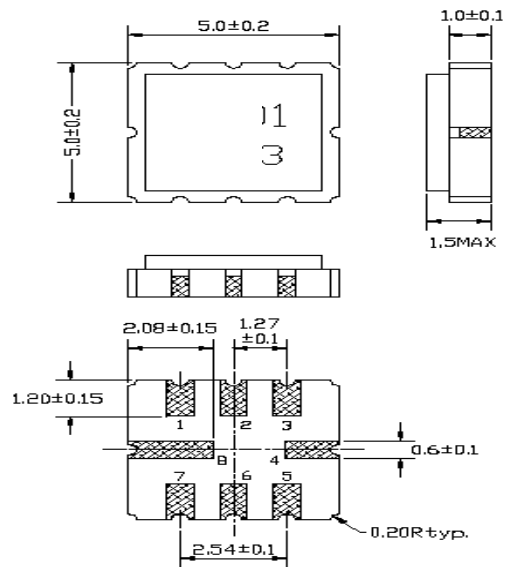
TMX U388

SAW Front-End Filter - European Wireless Receivers - RF
Specification (Rev-3)

February 08th, 2005

Package Drawing

Unit: mm



1