

MONOLITHIC POWER MOS FET ARRAY

DESCRIPTION

The μ PA1604 is Monolithic N-channel Power MOS FET Array that built in 4 circuits, Clump Diode and resistances designed for LED, Relay, Thermal Head, and so on.

FEATURES

- Direct driving is possible by standard Logic IC or Microcomputer. (4 V driving is possible)
- Output Voltage: $V_{O(peak)} = 50$ V MAX.
Output Current: $I_{O(peak)} = 1.5$ A MAX.
- $R_{on} = 1 \Omega$ TYP. at: $I_O = 600$ mA, $V_I = 4.5$ V
- Wide Operation Temperature: -40 to $+85$ °C
- Output Voltage Clump Diode built in.
- Low Input Active

ORDERING INFORMATION

Part Number	Package	Quality Grade
μ PA1604CX	16-Pin DIP	Standard

Please refer to "Quality grade on NEC Semiconductor Devices" (Document number IEI-1209) published by NEC Corporation to know the specification of quality grade on the devices and its recommended applications.

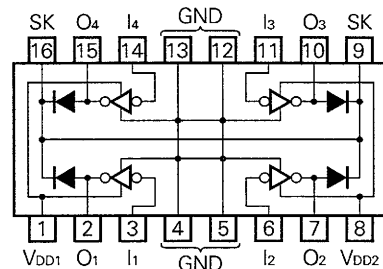
ABSOLUTE MAXIMUM RATINGS ($T_a = 25$ °C)

Supply Voltage	V_{DD}	-0.5 to $+7.0$	V
Output Voltage	$V_{O(DC)}$	30	V
Output Peak Voltage*	$V_{O(peak)}$	50	V
Input Voltage	V_I	-0.5 to $V_{DD} + 0.5$	V
Output Current (DC)	$I_{O(DC)}$	870	mA/unit
Output Current (pulse)**	$I_{O(pulse)}$	1500	mA/unit
Input Current	I_I	± 10	mA/unit
Diode Reverse Voltage	V_R	50	V
Diode Forward Current	I_F	1500	mA/unit
Total Power Dissipation	P_D	1.0	W/PKG
Operating Temperature	T_{opt}	-40 to $+85$	°C
Storage Temperature	T_{stg}	-55 to $+150$	°C

* $PW \leq 10$ ms, Duty Cycle ≤ 50 %

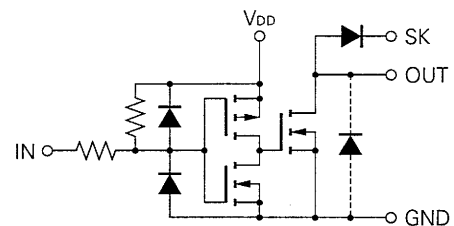
** $PW \leq 10$ ms, Duty Cycle ≤ 30 %

CONNECTION DIAGRAM



I : Input
O : Output
 V_{DD} : Supply Voltage

Equivalent Circuits (1/8 Circuit)



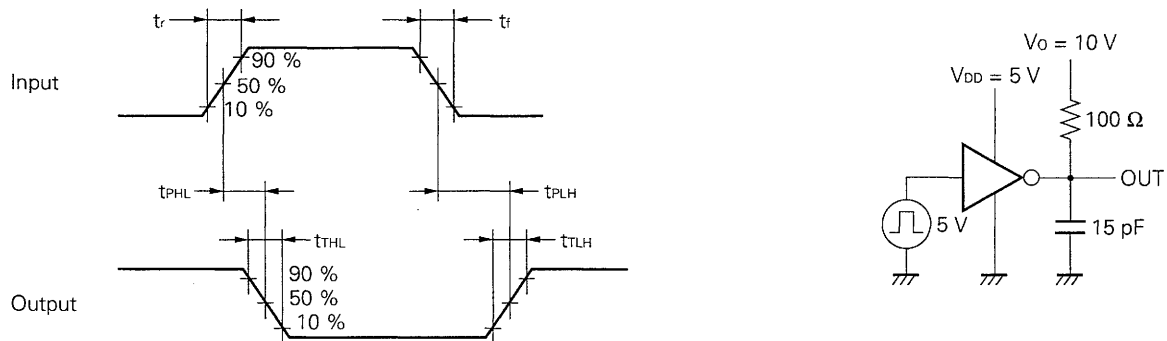
RECOMMENDED OPERATING CONDITIONS (T_a = -40 to +85 °C)

CHARACTERISTIC	SYMBOL	MIN.	TYP.	MAX.	UNIT	TEST CONDITIONS
Supply Voltage	V _{DD}	4.5	5.0	5.5	V	
Output Voltage	V _{O(DC)}			28	V	
Output Current	I _{O(DC)}			540	mA/unit	DC, 1 circuit
	I _{O(pulse)}			600	mA/unit	PW ≤ 10 ms, Duty Cycle ≤ 20 %, 4 circuits
Input Voltage	V _I	0		5	V	
High-Level Input Voltage	V _{IH}	2			V	
Low-Level Input Voltage	V _{IL}			0.8	V	
Diode Reverse Voltage	V _R			40	V	
Diode Forward Current	I _F			600	mA	

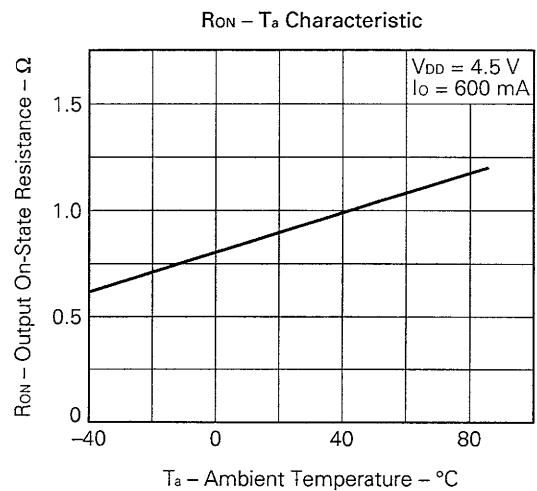
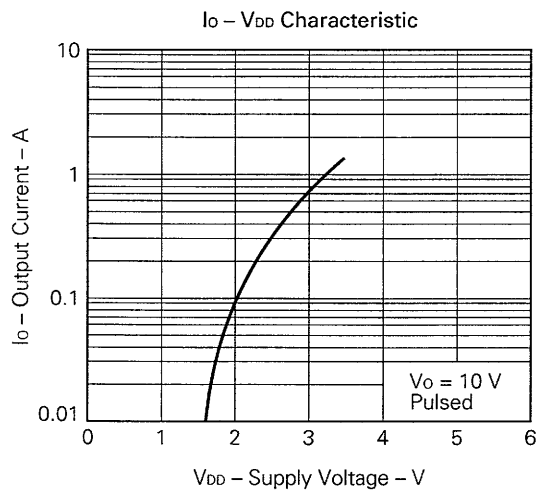
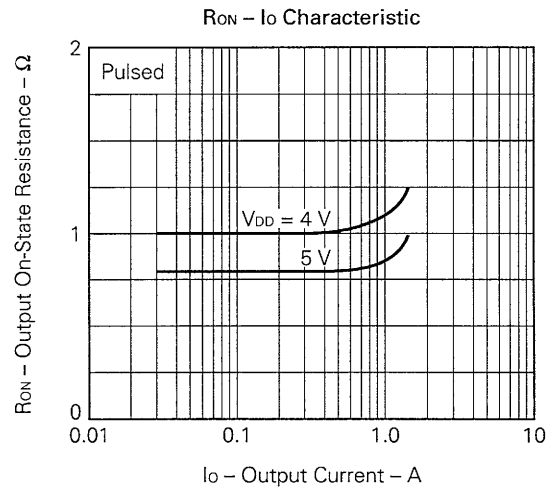
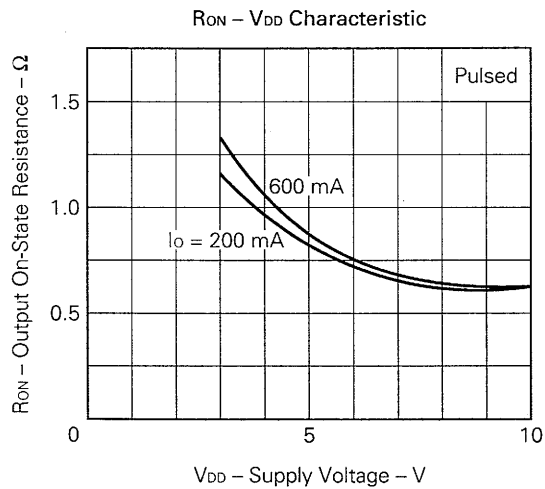
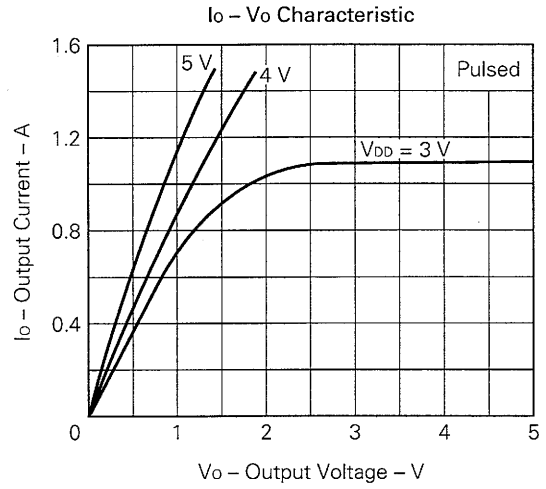
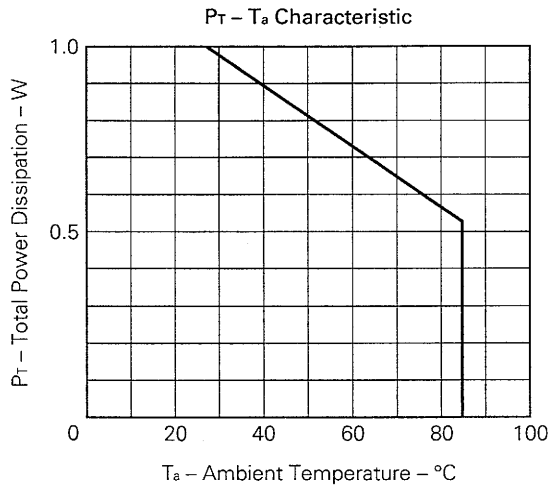
ELECTRICAL CHARACTERISTICS (T_a = 25 °C)

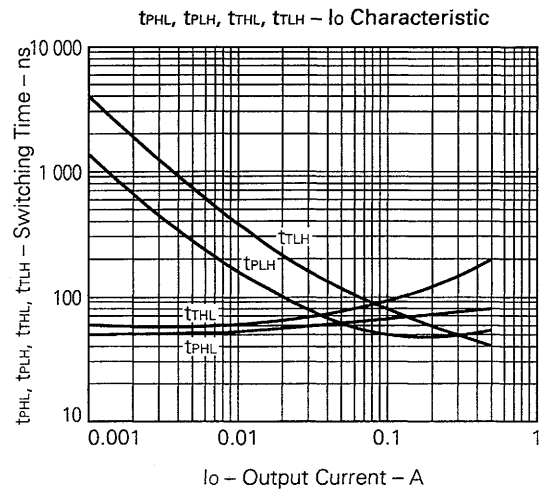
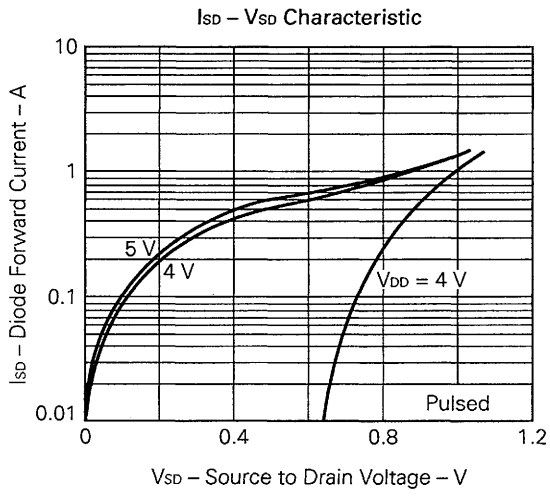
CHARACTERISTIC	SYMBOL	MIN.	TYP.	MAX.	UNIT	TEST CONDITIONS
Supply Voltage	I _{DD(ON)}			1	mA	V _{DD} = 5.5 V, V _I = 0
	I _{DD(OFF)}			10	μA	V _{DD} = 5.5 V, V _I = 5.5 V
Output Leakage Current	I _{O(OFF)}			10	μA	V _{DD} = 5.5 V, V _I = 5.5 V, V _O = 50 V
Output On-state Resistance	R _{on}		1	1.3	Ω	V _{DD} = 4.5 V, V _I = 0, I _O = 600 mA
Output On-state Voltage	V _{O(ON)1}			0.1	V	V _{DD} = 4.5 V, V _I = 0, I _O = 10 mA
	V _{O(ON)2}			1.0	V	V _{DD} = 4.5 V, V _I = 0, I _O = 600 mA
Input Voltage	V _{I(OFF)}	2			V	V _{DD} = 5 V, V _O = 50 V, I _O = 100 μA
	V _{I(ON)1}			0.8	V	V _{DD} = 5 V, V _O = 0.8 V, I _O = 1 mA
Input Current	I _{IH}			10	μA	V _{DD} = 5.5 V, V _I = 5.5 V, V _O = 0 V
	I _{IL}			-1	mA	V _{DD} = 5.5 V, V _I = 0 V, V _O = 50 V
Input Capacitance	C _{in}		10		pF	f = 1 MHz
Delay Time	t _{PHL}		70		ns	V _{DD} = 5 V, R _L = 100 Ω V _O = 10 V, C _L = 15 pF t _r , t _f ≤ 5 ns See Fig. 1
	t _{PLH}		50		ns	
Rise Time	t _{TLH}		40		ns	
Fall Time	t _{THL}		110		ns	
Diode Leakage Current	I _R			50	μA	V _R = 50 V, T _a = 25 °C
				100	μA	V _R = 50 V, T _a = 85 °C
Diode Forward Voltage	V _F			2	V	I _F = 1.25 A

Fig. 1 Switching Wave Forms and Test Circuits



TYPICAL CHARACTERISTICS ($T_a = 25^\circ\text{C}$)

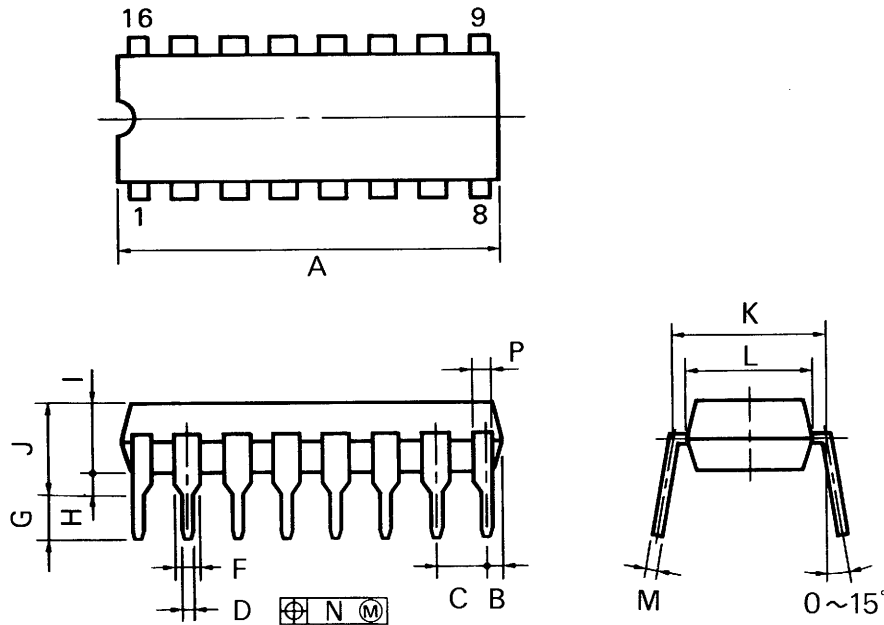




PACKAGE DIMENSIONS

• μPA1604CX

16PIN PLASTIC DIP (300 mil)



P16C-100-300A,C

NOTES

- 1) Each lead centerline is located within 0.25 mm (0.01 inch) of its true position (T.P.) at maximum material condition.
- 2) Item "K" to center of leads when formed parallel.

ITEM	MILLIMETERS	INCHES
A	20.32 MAX.	0.800 MAX.
B	1.27 MAX.	0.050 MAX.
C	2.54 (T.P.)	0.100 (T.P.)
D	0.50 ±0.10	0.020 ^{+0.004} / _{-0.005}
F	1.2 MIN.	0.047 MIN.
G	3.5 ±0.3	0.138 ±0.012
H	0.51 MIN.	0.020 MIN.
I	4.31 MAX.	0.170 MAX.
J	5.08 MAX.	0.200 MAX.
K	7.62 (T.P.)	0.300 (T.P.)
L	6.4	0.252
M	0.25 ^{+0.10} / _{-0.05}	0.010 ^{+0.004} / _{-0.003}
N	0.25	0.01
P	1.0 MIN.	0.039 MIN.

RECOMMENDED SOLDERING CONDITIONS

The following conditions (see table below) must be met when soldering this product.

Please consult with our sales offices in case other soldering process is used, or in case soldering is done under different conditions.

TYPES OF THROUGH HOLE MOUNT DEVICE

μPA1604CX

Soldering process	Soldering conditions	Symbol
Wave soldering	Solder temperature: 260 °C or below, Flow time: 10 seconds or below	

Reference

Document name	Document No.
Quality control of NEC semiconductors devices.	TEI-1202
Quality control guide of semiconductors devices.	MEI-1202
Assembly manual of semiconductors devices.	IEI-1207
Semiconductor device package manual	IEI-1213
SMD surface mount technology manual	IEI-1207

[MEMO]

[MEMO]

No part of this document may be copied or reproduced in any form or by any means without the prior written consent of NEC Corporation. NEC Corporation assumes no responsibility for any errors which may appear in this document.

NEC Corporation does not assume any liability for infringement of patents, copyrights or other intellectual property rights of third parties by or arising from use of a device described herein or any other liability arising from use of such device. No license, either express, implied or otherwise, is granted under any patents, copyrights or other intellectual property rights of NEC Corporation or others.

The devices listed in this document are not suitable for use in aerospace equipment, submarine cables, nuclear reactor control systems and life support systems. If customers intend to use NEC devices for above applications or they intend to use "Standard" quality grade NEC devices for applications not intended by NEC, please contact our sales people in advance.

Application examples recommended by NEC Corporation.

Standard: Computer, Office equipment, Communication equipment, Test and Measurement equipment, Machine tools, Industrial robots, Audio and Visual equipment, Other consumer products, etc.

Special: Automotive and Transportation equipment, Traffic control systems, Antidisaster systems, Anticrime systems, etc.

M4 92.6