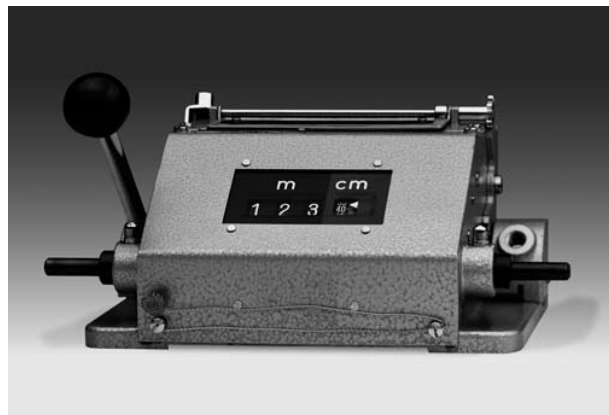


# Totalizers mechanic

## Meter counters with imprint feature PTB approved, adding Display 5 digits, manual reset by lever

### M 275



M 275 - PTB Meter counter

#### Technical data - mechanical design

|                           |  |
|---------------------------|--|
| Function                  | PTB Meter counter with imprint   |
| Display                   | White numbers on black<br>1st number wheel with scale  |
| Number of digits          | 4-digits   |
| Digit height              | 7 mm (numeral readout)<br>4.5 mm (printed numerals)  |
| Reset                     | Manual by reset lever  |
| Imprint                   | By lever upon reset  |
| Imprint on                | Labels   |
| Card thickness            | ≤0.4 mm  |
| Card width                | 28...72 mm   |
| Imprint correction        | Imprint is rounded to 5 cm   |
| Ink ribbon                | Width 13 mm, length 3 m<br>automatic ink ribbon transport  |
| Count mode                | Adding in a rotational direction<br>to be indicated, subtracting<br>in reverse direction.<br>2 revs. = 10 counts |
| Drive shaft               | Both sides, ø7 mm  |
| Measuring speed           | 2 revs. = 10 di. = <250.0 m/min  |
| Measuring precision       | 1 cm   |
| Measuring range           | 999.99 m   |
| Operating temperature     | 0...+60 °C   |
| Housing type              | Housing with ground plate  |
| Housing colour            | Hammertone green   |
| Dimensions W x H x L      | 200 x 115 x 75 mm  |
| Dimensions mounting plate | 167 x 115 mm   |
| Mounting                  | Surface mount housing  |
| Weight approx.            | 2200 g   |
| Material                  | Aluminium die cast alloy   |

#### Features

- PTB Meter counter, large
- Adding
- Display 5-digits
- Imprint of the measured result on cards
- Reset by lever

#### Description

Besides measuring operations, counter M 275 enables imprint of the measured result on labels what means a considerable benefit compared to standard displays for pure readout. Imprint and reset are manual operations with automatic ink ribbon transport. The counter is driven either directly by the measuring roller or by measuring wheels running over the surface of the measured material. The meter counter goes together with measuring wheels of 0.5 m circumference.

#### Calibrated meter counters with imprint function

Meter counter M 275 is calibrated by the German Physical-Technical Institute (PTB) and approved for calibrated measuring systems. However, our customers must apply for calibration of the whole measuring system at the corresponding calibration authorities.

#### Imprint correction balance

Prior to imprint, the counter will always set respectively reset the first digit to the nearest integer number what might result in inferior deviation in each printing operation.

# Totalizers mechanic

## Meter counters with imprint feature PTB approved, adding Display 5 digits, manual reset by lever

M 275

### Part number

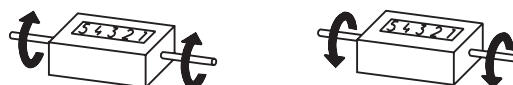
M 275. 010 A A

Display  
A 4-digits 999.99 m

Count mode / drive  
07 2 revolutions = 10 digits / direction I  
08 2 revolutions = 10 digits / direction II

Reset  
010 With reset lever

### Direction of strokes and rotation



Away from user  
Sense of rotation I

Towards user  
Sense of rotation II

### Accessories

#### Measuring wheels (page %S)

MR512.07A Circumf. 50 cm, knurled aluminium

MR542.07D Circumf. 50 cm, smooth Hytrel TPE-E

MR552.07A Circumf. 50 cm, smooth Vulkollan PUR

MR562.07A Circumf. 50 cm, knopped rubber NBR Nitril

MR592.07D Circumf. 50 cm, grooved Hytrel TPE-E

### Dimensions

