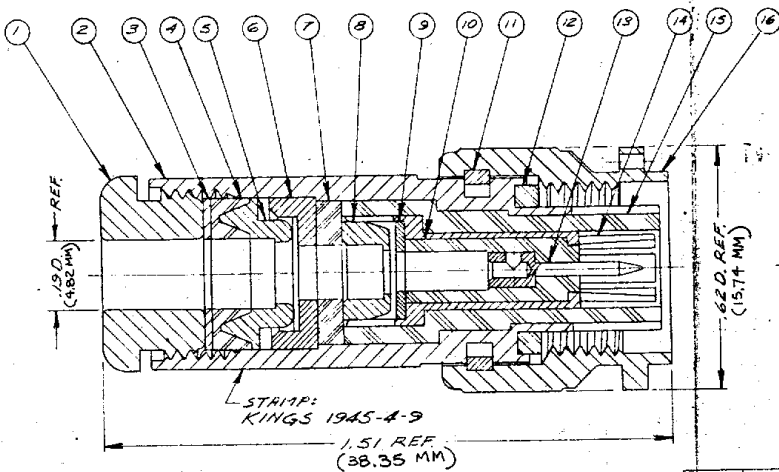


DASH NO.	DESCRIPTION	MADE FROM
----------	-------------	-----------



NOTES:

1. FOR USE WITH MICRODOT 293-3930 CABLE.
2. FOR CABLING INSTRUCTIONS SEE CP-1301.

UNLESS OTHERWISE SPECIFIED:

- | | |
|--|--|
| 1. TOLERANCES: FRACTIONS & 2 PLACE DECIMALS ± .010 | 2. REMOVE ALL BURRS. BREAK SHARP EDGES .005 MAX. |
| 3 PLACE DECIMALS ± .004 | 3. NO FILLETS PERMITTED. |
| T. I. R. CONCENTRICITY OF ANY 2 DIAMETERS MAY NOT EXCEED HALF THE SUM OF THEIR TOLERANCES. | 4. SURFACE ROUGHNESS #3 MICROINCHES RMS MAX. |
| | 5. ALL DIMENSIONS PRIOR TO PLATING. |

ITEM	REQ'D	DESCRIPTION	PART NO.
16	1	COUPLING NUT	
15	1	INSULATOR	
14	1	OUTER CONTACT	
13	1	TNC CONTACT M	1-4896-3MA9
12	1	GASKET	
11	1	C-RING	
10	1	INSULATOR	
9	1	WASHER	C-19-88-17-M06
8	1	BRAID CLAMP	1-1117-1M06
7	1	INSULATOR	1-1118-1M99
6	1	RETAINER	1-1119-1M06
5	1	BRAID CLAMP	C-19-88-4-M06
4	1	GASKET	1035-1-M99
3	1	WASHER	C-19-88-3-M06
2	1	BODY	
1	1	CLAMP NUT	A-59-309-1-M06

REVISIONS	
ISSUE	CHANGES
0	ER 13942 MJB 3 DEC 74
1	CN 15911 A GA 15 JUL 76
2	CN 16130 E GA 29 JUL 76
3	CN 24945 C GJG 19 AUG 83
4	CN 28495 D AJ 10 DEC 86
5	CN 31416 A KH 23 FEB 90
6	CN 34639 C KH 17 MAY 93

TUBED ON:	
REP:	
FINISH:	
SPEC:	KER 10004
MATL:	
SPEC:	TNC TRIAX PLUG
DRAWN:	MJB
DATE:	21 NOV 74
APPR:	LL
DATE:	3 DEC 74
KINGS ELECTRONICS 40 MARLBOROUGH ROAD TUCKAHOE, N. Y. 10707	
1945-A-9	