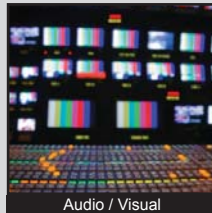


ANTI-VANDAL SWITCHES  
 DETECTOR SWITCHES  
 DIP SWITCHES  
 KEYLOCK SWITCHES  
 NAVIGATION SWITCHES  
 PUSHBUTTON SWITCHES  
 ROCKER SWITCHES  
 ROTARY SWITCHES  
 SLIDE SWITCHES  
 SNAP ACTION SWITCHES  
 TACTILE SWITCHES  
 TOGGLE SWITCHES  
 CAP OPTIONS



## APPLICATIONS / MARKETS



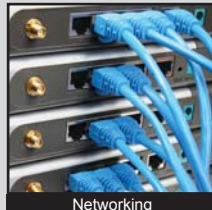
Audio / Visual



Computer Peripherals



Instrumentation



Networking



Telecommunication

# RoHS

## SPECIFICATIONS

**Electrical Rating:** 100mA, 20VDC  
**Life Expectancy:** 50,000,000 Cycles  
**Contact Resistance:** 150mΩ Max.  
**Insulation Resistance:** 10MΩ Min. at 500VDC  
**Dielectric Strength:** 500VAC for 1 Minute  
**Operating Temperature:** -5°C to 60°C  
**Operating Force:** 250gf ± 50gf  
**Total Travel:** 3.3mm ± 0.3mm

**Functions:** SPST, Off-(On)

## FEATURES & BENEFITS

- 50,000,000 cycle life expectancy
- Long 3.3mm travel
- Illumination options
- 2 cap sizes
- Price competitive

## PART NUMBER CONFIGURATOR

Series	Function Style	Circuit	Cap Size	Cap Configuration	Cap Color	Diffuser Color	LED Color Options
LP16	OA	1 - SPST	A - 12.2mm Sq. B - 14.6mm Sq.	S - Sculptured	T - Transparent* R - Red G - Green B - Blue Y - Yellow	W - White R - Red G - Green B - Blue Y - Yellow T - Transparent**	N - No LED R - Red G - Green Y - Yellow B - Blue

\* Always used when a diffuser color is defined

\*\* Always used when a cap color is defined

Specifications subject to change without notice



**E-SWITCH®**

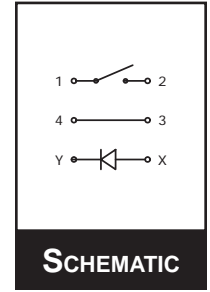
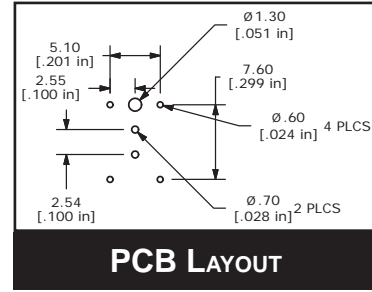
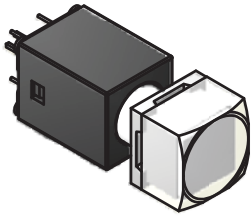


www.e-switch.com

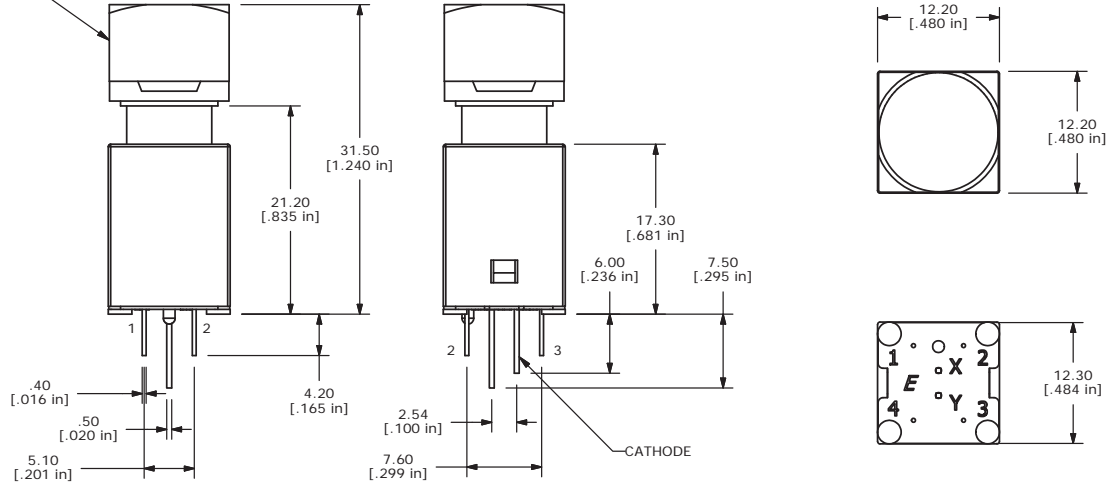
800.867.2717

1

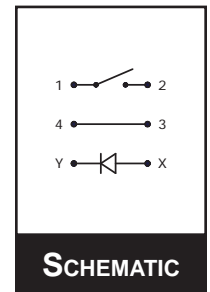
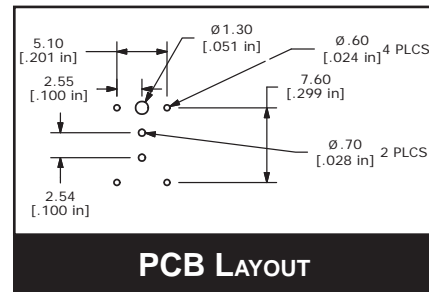
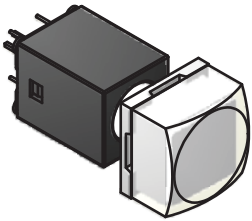
## LP16 - "A" CAP SIZE



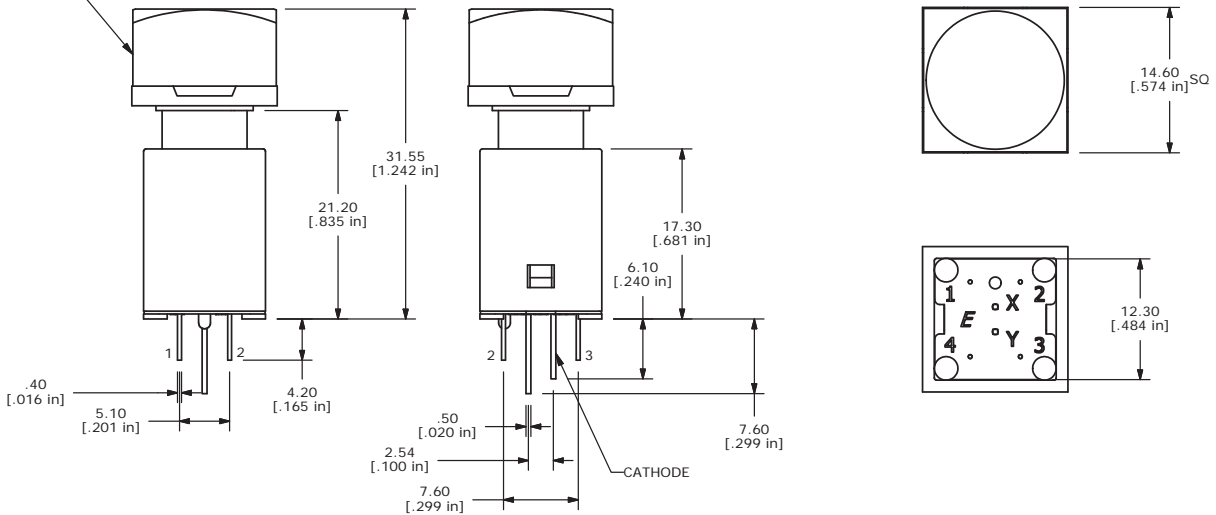
CLEAR CAP WITH WHITE DIFFUSER



## LP16 - "B" CAP SIZE



CLEAR CAP WITH WHITE DIFFUSER



**E-SWITCH**®



www.e-switch.com

800.867.2717

2

ANTI-VANDAL SWITCHES  
 DETECTOR SWITCHES  
 DIP SWITCHES  
 KEYLOCK SWITCHES  
 NAVIGATION SWITCHES  
 PUSHBUTTON SWITCHES  
 ROCKER SWITCHES  
 ROTARY SWITCHES  
 SLIDE SWITCHES  
 SNAP ACTION SWITCHES  
 TACTILE SWITCHES  
 TOGGLE SWITCHES  
 CAP OPTIONS