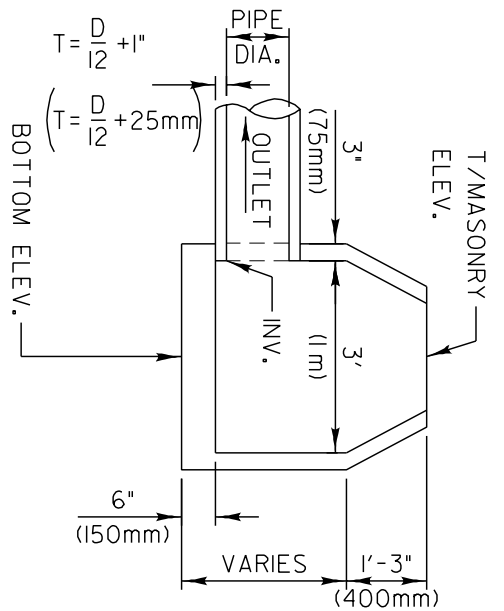
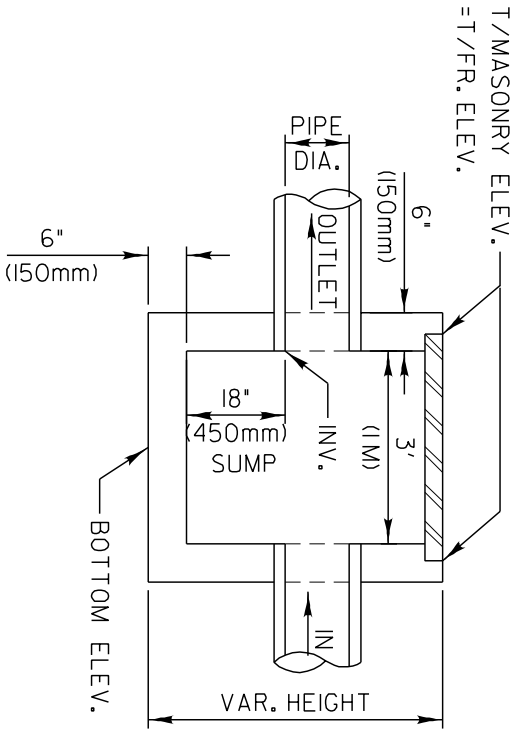


INLET - TYPE A
SEE STD. 602301



INLET - TYPE B
SEE STD. 602306



FLUSH INLET BOX
SEE STD. 542546


NOTE: FRAME & GRATE
INCLUDED IN COST
OF STRUCTURE

GENERAL NOTES

- ALL STRUCTURES SHALL BE IN CONFORMANCE WITH THEIR RESPECTIVE STANDARD DRAWINGS EXCEPT:
1. STEPS ARE NOT REQUIRED.
 2. THE BOTTOMS SHALL BE CAST WITH THE BARREL.

SCALE: 1" = 3'

REVISIONS	DATE
DUAL DIMENSIONS	08/29/01


 Lake County
 Division of Transportation

APPROVED BY: G. N. WIESNER
 DATE: NOV. 5, 1999

**MATERIALS LETTING
 DRAINAGE STRUCTURE
 DETAIL**

LC1000 B
 SHEET 2 OF 3