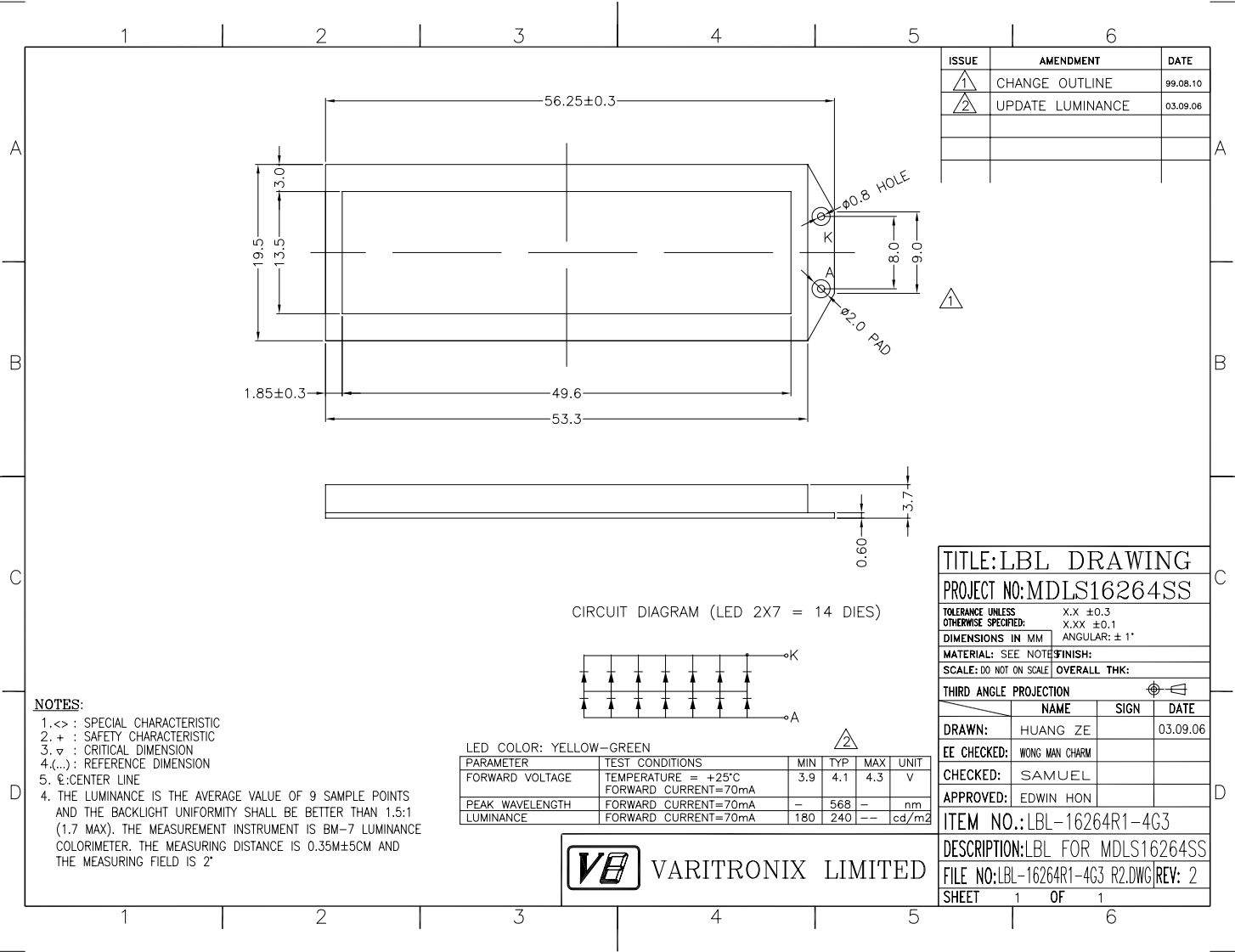


ISSUE	AMENDMENT	DATE
1	CHANGE OUTLINE	99.08.10
2	UPDATE LUMINANCE	03.09.06

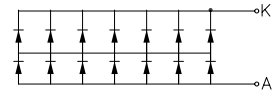


THIRD ANGLE PROJECTION

	NAME	SIGN	DATE
DRAWN:	HUANG ZE		03.09.06
EE CHECKED:	WONG MAN CHAM		
CHECKED:	SAMUEL		
APPROVED:	EDWIN HON		

ITEM NO.: LBL-16264R1-4G3
 DESCRIPTION: LBL FOR MDLS16264SS
 FILE NO: LBL-16264R1-4G3 R2.DWG REV: 2
 SHEET 1 OF 1

CIRCUIT DIAGRAM (LED 2X7 = 14 DIES)



LED COLOR: YELLOW-GREEN

PARAMETER	TEST CONDITIONS	MIN	TYP	MAX	UNIT
FORWARD VOLTAGE	TEMPERATURE = +25°C FORWARD CURRENT=70mA	3.9	4.1	4.3	V
PEAK WAVELENGTH	FORWARD CURRENT=70mA	-	568	-	nm
LUMINANCE	FORWARD CURRENT=70mA	180	240	--	cd/m ²

NOTES:

- 1.<> : SPECIAL CHARACTERISTIC
- 2.+ : SAFETY CHARACTERISTIC
- 3.∇ : CRITICAL DIMENSION
- 4.(...): REFERENCE DIMENSION
- 5.⌀: CENTER LINE
4. THE LUMINANCE IS THE AVERAGE VALUE OF 9 SAMPLE POINTS AND THE BACKLIGHT UNIFORMITY SHALL BE BETTER THAN 1.5:1 (1.7 MAX). THE MEASUREMENT INSTRUMENT IS BM-7 LUMINANCE COLORIMETER. THE MEASURING DISTANCE IS 0.35M±5CM AND THE MEASURING FIELD IS 2'

