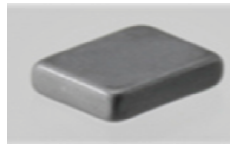


SMD Power Inductor C201610/DS



Under Development



Description

- Multilayer power inductor.
- Magnetically shielded.
- L x W x H: 2.2 x 1.8 x 1.0 mm Max.
- Product weight: 13mg (Ref.)
- Moisture Sensitivity Level: 1
- RoHS compliance.
- Halogen Free available.

Environmental Data

- Operating temperature range: -30°C ~ +85°C (including coil's self temperature rise)
- Storage temperature range: -30°C ~ +85°C
- Solder reflow temperature: 260 °C peak.

Packaging

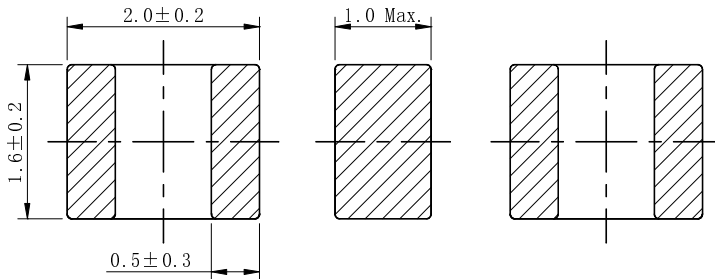
- Carrier tape and reel packaging.

Applications

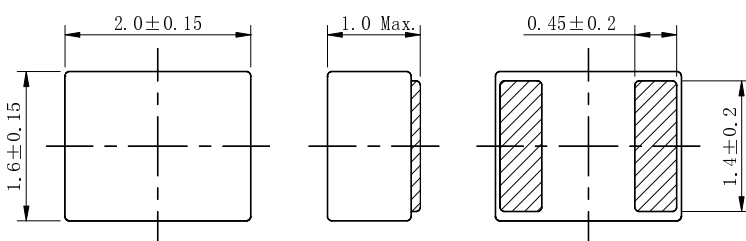
- Ideally used in DC/DC converters for Smart phones, Cell phones, other portable instruments, HDD, and SSD.

Dimension - [mm]

C201610LDS-1R0~4R7



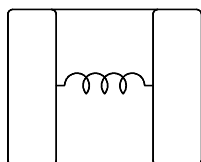
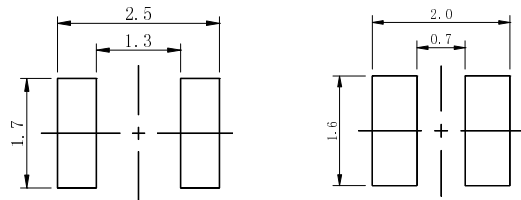
C201610LDB-1R0, C201610WB-1R5, 4R7



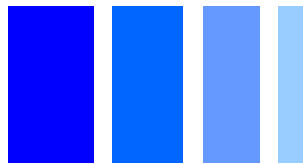
Land pattern and Schematics - [mm]

C201610LDS-1R0~4R7

C201610LDB-1R0, C201610WB-1R5, 4R7



SMD Power Inductor C201610/DS



sumida

Under Development

Electrical Characteristics

Part No.	L (μ H) $\pm 20\%$ ※1	D.C.R. (m Ω) $\pm 25\%$	Saturation current (mA) ※2	Temperature rise Current (mA) ※3
C201610LDS-1R0	1.0	90	700	1900
C201610LDS-1R5	1.5	120	700	1600
C201610LDS-2R2	2.2	140	500	1500
C201610LDS-3R3	3.3	180	400	1300
C201610LDS-4R7	4.7	200	350	1300
C201610LDB-1R0	1.0	105	1200	1700
C201610WB-1R5	1.5	120	1200	1600
C201610WB-4R7	4.7	430	600	750

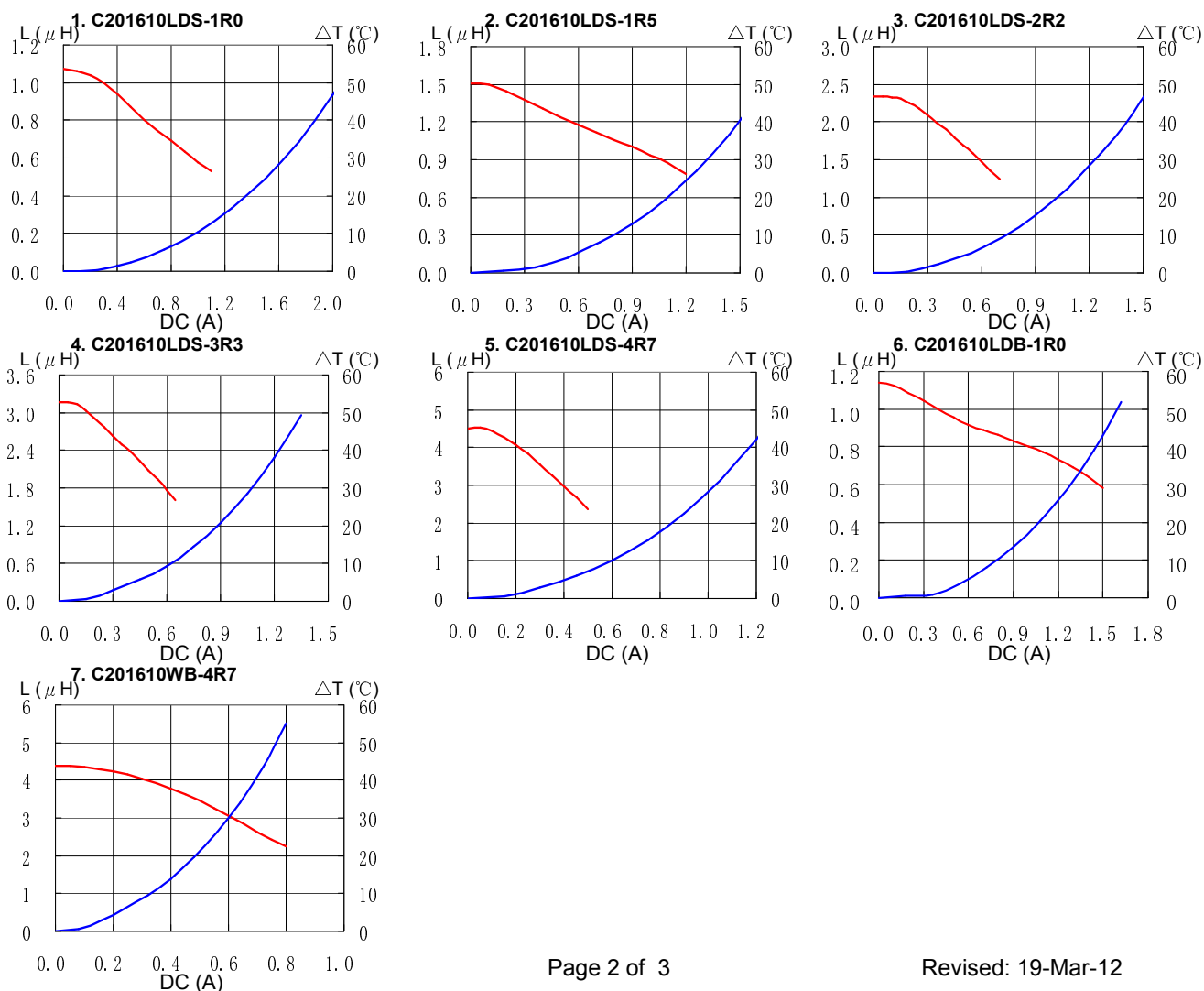
※1. Inductance measuring condition: at 3MHz.

※2. Saturation current: The value of D.C. current when the inductance decreases to 70% of it's nominal value.

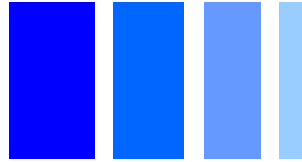
※3. Temperature rise current: The value of D.C. current when the temperature rise is $\Delta t=40^{\circ}\text{C}$ ($T_a=25^{\circ}\text{C}$).

Saturation Current & Temperature Rise Graph

— L (20°C) — ΔT



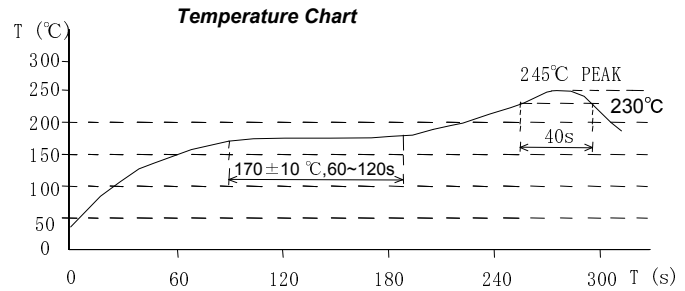
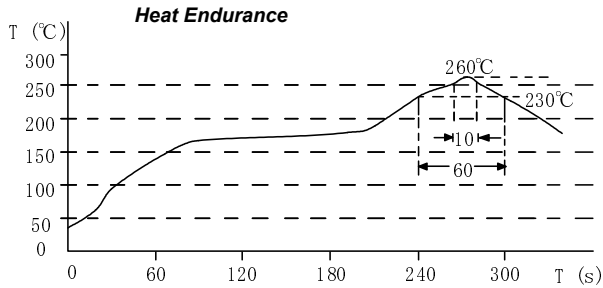
SMD Power Inductor C201610/DS



sumida

Under Development

Solder Reflow Condition



Please refer to the sales offices on our website - <http://www.sumida.com>

Hong Kong

Tel.+852-2880-6688
FAX.+852-2565-9600
sales@hk.sumida.com

Tokyo

Tel.+81-3-5202-7112
FAX.+81-3-5202-7105
sales@jp.sumida.com

Chicago

Tel.+1-847-545-6700
FAX. +1-847-545-6720
sales@us.sumida.com

Shanghai

Tel.+86-021-5836-3299
FAX.+86-021-5836-3266
shanghai.sales@cn.sumida.com

Seoul

Tel.+82-2-6237-0777
FAX.+82-2-6237-0778
sales@kr.sumida.com

Oberzell

Tel.+49-8591-937-0
FAX. +49-8591-937-103
contact@sumida-eu.com

Shenzhen

Tel.+86-755-8291-0228
FAX.+86-755-8291-0338
shenzhen.sales@cn.sumida.com

Singapore

Tel.+65-6296-3388
FAX.+65-6296-3390
sales@sg.sumida.com

Neumarkt

Tel.+49-9181-4509-110
FAX. +49-9181-4509-310
infocomp@eu.sumida.com

Taipei

Tel.+886-2-8751-2737
FAX.+886-2-8751-2738
sales@tw.sumida.com

San Jose

Tel.+1-408-321-9660
FAX.+1-408-321-9308
sales@us.sumida.com