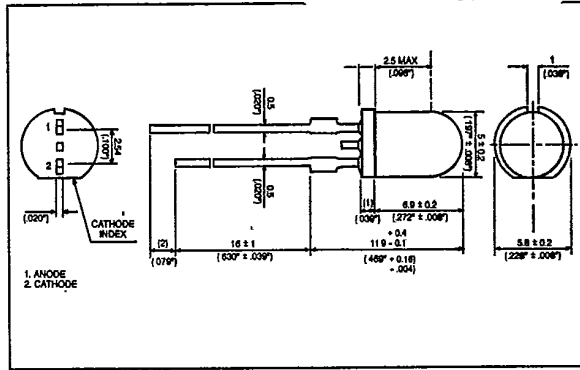


# 2-CHIP T-1<sup>3</sup>/<sub>4</sub> LED LAMPS

## FEATURES

- 2-chip series connection.
- Transparent lensing available in red, orange, yellow and green.
- Provides excellent on/off contrast ratio.
- Superior to standard LEDs for backlighting.



## MAXIMUM RATINGS (Ta = 25°C)

PART NO.	FORWARD CURRENT (IF) (mA)	REVERSE VOLTAGE (VR) (V)	POWER DISSIPATION (PD) (mW)	OPERATING TEMPERATURE (TOPR) (°C)	STORAGE TEMPERATURE (TSTG) (°C)
MT550-HR	30	8	—	-20 ~ 75	-30 ~ 100
MT550-G	30	8	—	-20 ~ 75	-30 ~ 100
MT550-Y	30	8	—	-20 ~ 75	-30 ~ 100
MT550-O	30	8	—	-20 ~ 75	-30 ~ 100
MT550-AUR	30	8	—	-20 ~ 75	-30 ~ 100

## OPTO-ELECTRICAL CHARACTERISTICS (Ta = 25°C)

PART NO.	MATERIAL	LENS COLOR	VIEWING ANGLE	LUMINOUS INTENSITY (mcd)				FORWARD VOLTAGE (V)			REVERSE CURRENT		PEAK WAVELENGTH	SPEC. LINE HALF WIDTH
			typ.	min.	typ.	@mA	typ.	max.	@ mA	μA	Vr	nm	nm	
MT550-HR	GaAsP/GaP	Red/Clear	80°	3	20	20	4.2	5.4	20	100	8	8	635	40
MT550-G	GaP/GaP	Green/Clear	80°	4	25	20	4.2	5.4	20	100	8	8	565	25
MT550-Y	GaAsP/GaP	Yellow/Clear	80°	3	20	20	4.2	5.4	20	100	8	8	585	32
MT550-O	GaAsP/GaP	Orange/Clear	80°	3	20	20	4.2	5.4	20	100	8	8	610	35
MT550-AUR	GaAlAs	Water/Clear	80°	85	350	20	3.6	4.4	20	100	8	8	660	25