

## KVR266X64SC25/512 512MB 64M x 64-Bit DDR266 CL2.5 200-Pin SODIMM

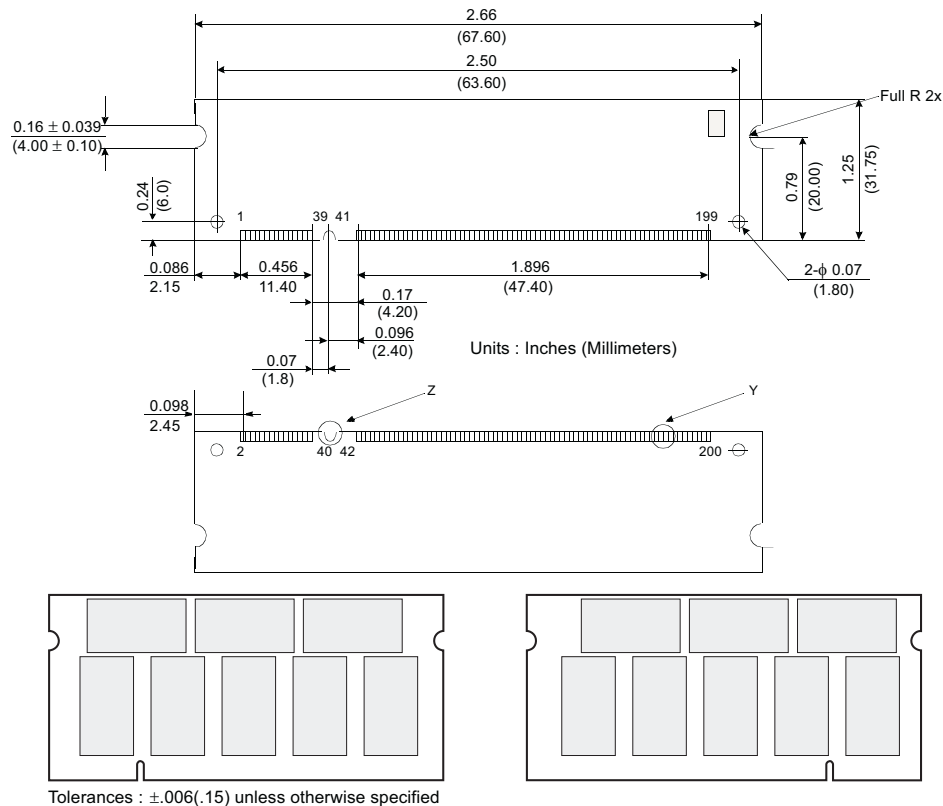
### DESCRIPTION:

This document describes ValueRAM's 64M x 64-bit (512MB) CL2.5 SDRAM (Synchronous DRAM) DDR266 memory module. The components on this module include sixteen 32M x 8-bit (8M x 8-bit x 4 Bank / 133MHz, 7.5ns, CL2.5) DDR266 SDRAM in uBGA packages. This 200-pin DIMM uses gold contact fingers and requires +2.5V. The electrical and mechanical specifications are as follows:

### FEATURES:

- ✓ Clock Cycle Time (tCK) 7.5ns (min.) / 12ns (max.)
- ✓ Row Cycle Time (tRC) 65ns (min.)
- ✓ Refresh Row Cycle Time (tRFC) 75ns (min.)
- ✓ Row Active Time (tRAS) 45ns (min.) / 120,000ns (max.)
- ✓ Single Power Supply of +2.5V (+/- .25V)
- ✓ Operating (IDD0) 2.900 W
- ✓ UL Rating 94 V - 0

**Note:** The module defined in this data sheet is one of several configurations available under this part number. While all configurations are compatible, the DRAM combination and/or the module height may vary from what is described here. However, in no configuration will the module height exceed 1.250" (31.75mm).



**Figure 1: KVR266X64SC25/512 200-Pin DDR266**