

### PCM-3610 Isolated RS-232/422/ 485 Module

#### Features

- High speed transmission rate
- Automatic RS-485 data flow control
- Jumper selectable interrupt level
- Supports Windows 95/98/NT/2000/ME, Linux (ICOM utility), DOS/Windows 3.1

#### Specifications

- **Channel 1:** RS-232,422,or 485
- **Channel 2:** RS-422, or RS-485
- **Baud rate:** 50 ~ 115,200 bps
- **Character length:** 5,6,7, or 8 bits
- **Parity:** Even, odd, or none
- **Stop bit:** 1, 1.5, or 2
- **Interrupt level:** IRQ 3, 4, 5, 6, 7, 9
- **I/O connectors:** Dual male DB-9
- **Power consumption:**  
+5 V @ 400 mA typical  
±12 V @ 950 mA max
- **Isolation:** 500 V<sub>DC</sub>

#### Ordering Information

- **PCM-3610-A**  
Isolated RS-232/422/485 module

### PCM-3612 Dual-port RS-422/485 Module

#### Features

- Long distance communication
- Automatic RS-485 data flow control
- Jumper selectable interrupt level
- Supports Windows 95/98/NT/2000/ME, Linux (ICOM utility), DOS/Windows 3.1

#### Specifications

- **Channel 1 and 2:** RS-422, or RS-485
- **Baud rate:** 50 ~ 115,200 bps
- **Character length:** 5,6,7,or 8 bits
- **Parity:** Even, odd, or none
- **Stop bit:** 1, 1.5, or 2
- **Interrupt level:**  
IRQ 3, 4, 5, 6, 7, 9, 10, 11, 12 or 15
- **I/O connectors:** dual male DB-9
- **Power consumption:**  
+5 V @ 400 mA typical  
±12 V @ 950 mA max
- **LED:**  
Red LED for TX  
Green LED for RX

#### Ordering Information

- **PCM-3612-A**  
Dual port RS-422/485 module

### PCM-3640/3641 4-port RS-232 High-Speed Module

#### Features

- Transmission speeds up to 460 Kbps (PCM-3641)
- Shared IRQ settings for each of 4 RS-232 ports (PCM-3641)
- Standard PC ports: COM1, COM2, COM3, COM4 compatible
- Supports Windows 95/98/NT/2000/ME, Linux (ICOM utility), DOS/Windows 3.1

#### Specification:

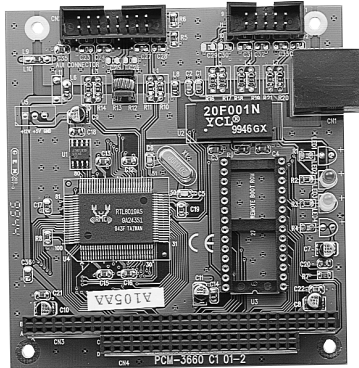
- **Bus interface:** PC/104
- **Number of ports:** 4
- **I/O address:** 0 x 0200 ~ 0 x 03F8
- **IRQ:** 3, 4, 5, 6, 7, 9, 10, 11, 12, 15
- **Data bits:** 5, 6, 7, 8
- **Stop bits:** 1, 1.5, 2
- **Parity:** none, even, odd
- **Speed (bps):** 50 ~ 460 K (PCM-3641)  
50 ~ 115.2 K (PCM-3640)
- **Connectors:** Four DB-9 male
- **Data signals:** TxD, RxD, RTS, CTS, DTR, DSR, DCD, RI, GND
- **Power requirement:**  
+5 V @ 200 mA (Typical) ;  
+5 V @ 250 mA (Max.)
- **Operating Temperature:** 0 ~ 65° C  
(refer to IEC-68-1-1, 2)
- **Storage Temperature:** -25 ~ 80° C

#### Ordering Information

- **PCM-3641**  
4-port RS-232 High-Speed module
- **PCM-3640**  
4-port RS-232 module

# PC/104

Jumperless Ethernet Module  
PC/104-plus Ethernet Module  
Dual-port Isolated CAN Interface Module



**PCM-3660**  
Jumperless Ethernet Module

### Features

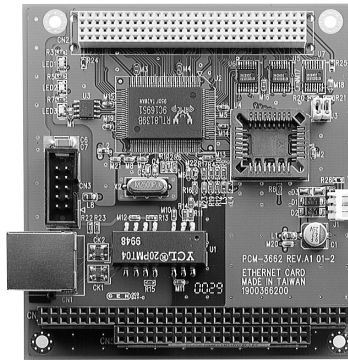
- Automatically detects 8-bit or 16-bit
- AUI connector supports external MAUs
- On-board 32 K byte buffer for multi-package

### Specifications

- **I/O address:** 200, 220, 240, 260, 280, 2A0, 2C0, 300, 320, 340, 380, 3A0
- **Interrupt level:** IRQ 3, 4, 5, 9, 10, 11, 12 or 15
- **Boot ROM address:** C0000, C8000, D0000, or D8000H
- **Data bus:** 8-bit, 16-bit, or auto-sending
- **Connector:** 16-bit PC/104 stackthrough connector RJ-45 connector for 10Base-T, 16-pin insulation displacement connector for AU1
- **Standard:** IEEE 802.3 10 Mbps CSMA/CD 10Base-T Transceiver
- **Power consumption:** +5 V @ 400 mA max

### Ordering Information

- PCM-3660-C1**  
Jumperless ethernet module
- PCM-3661-A**  
10Base-2 transceiver module



**PCM-3662**  
PC/104-plus Ethernet Module

### Features

- Support IEEE 802.3u Ethernet standard
- Support IEEE 802.3x Full Duplex Flow Control
- Support 10/100 Base-T Ethernet
- Support Wake-On-LAN function
- Provide 4 modes LED definition

### Specifications

- **Hardware**
- **PC-104 form-factor:** 64 x 8 mm
- **Data bus:** 32-bit

#### Software Driver support

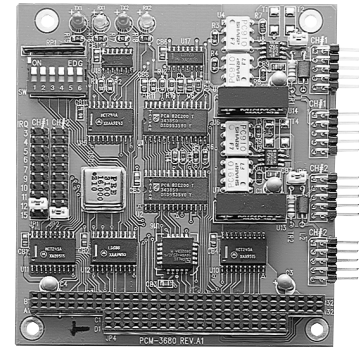
- Windows 95/98/NT/2000 driver
- Novell server driver
- Windows for workgroups driver
- Unixware 7.0 driver
- WinCE driver for x86 platform
- Novell ODI client driver
- Novell ODI driverfor client32
- Linux driver

#### General

- **Power:** +5V @ 250 mA
- **Temperature:** 0° C to 70° C (operating)  
-15° C to 80° C (storage)
- **Humidity:** 10% to 90% (operating)

### Ordering Information

- PCM-3662A**  
PC/104-plus Ethernet Module



**PCM-3680**  
Dual-port Isolated CAN Interface Module

### Features

- Operates two separate CAN networks at the same time
- High speed transmission up to 1 Mbps
- Direct memory mapping enables very fast access to the CAN controllers
- C library and examples included
- DOS Library, Utility and Win 3.1/NT DeviceNet DLL drivers included

### Specifications

- **Port:** 2
- **CAN controller:** SIA-1000
- **CAN transceiver:** SIA-1000
- **Signal support:** CAN\_H, CAN\_L
- **Memory segment base address:** From C800H to EFO0H
- **IRQ:** 3, 4, 5, 6, 7, 9, 10, 11, 12 or 15
- **Isolation voltage:** 1000 V<sub>DC</sub>
- **Power consumption:** +5V @ 400 mA typical, 950 mA
- **Connectors:** Dual DB-9 male connectors (cable included)
- **Operating temperature:** 32° F to 122° F (0 to 50° C)
- **Dimensions:** 3.6" X 3.8" (90mm x 96 mm)

### Ordering Information

- PCM-3680**  
Dual-port Isolated CAN Interface Module