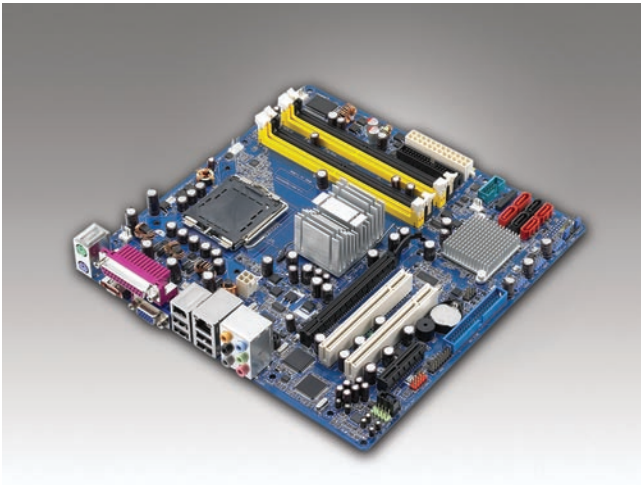


AIMB-564

Intel® LGA775 Core™ 2 Quad/Core™ 2 Duo/
MicroATX with VGA, PCIe, SW RAID, and LAN



Features

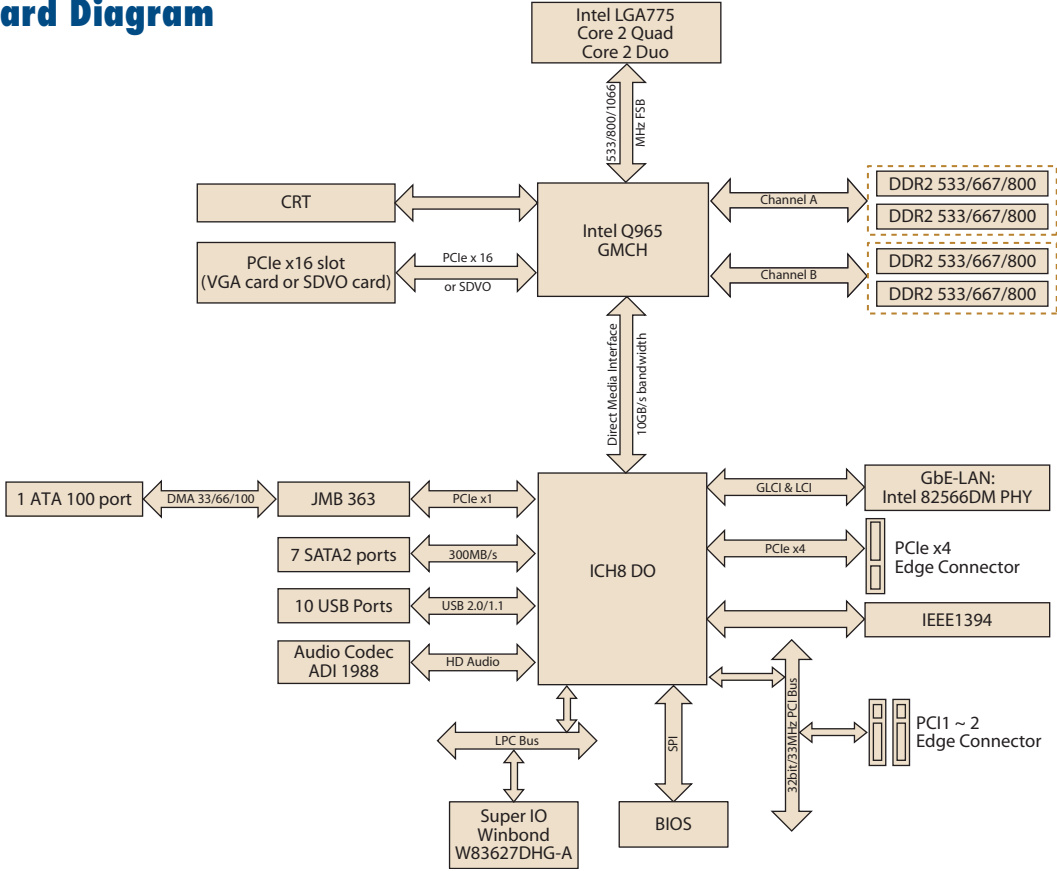
- Intel® Q965 chipset 533/800/1066 MHz FSB
- Supports Intel® Core™ 2 Quad/Core™ 2 Duo processor
- Dual channel DDR2 533/667/800 SDRAM up to 8 GB
- Chipset integrated VGA sharing 256 MB system memory
- PCIe x16 slot expansion
- Supports SATA RAID 0, 1, 5, and 10
- Supports single 10/100/1000 Mbps Ethernet via dedicated PCIe x1 bus
- TPM support via an optional daughter board



Specifications

	CPU (65nm/ 90nm)	Intel Core 2 Quad	Intel Core 2 Duo	Intel Pentium Dual-Core	Intel Pentium 4	Intel Celeron D	
Processor System	Max. Speed	Q6700 2.66 GHz	E6700 2.66 GHz	E2200 2.2 GHz	672 3.8 GHz	352 3.2 GHz	
	L2 Cache	8 MB	4 MB	1 MB	2 MB/1 MB	512KB	
	Chipset	Intel Q965+ICH8 DO					
	BIOS	AMI 16 Mbit, SPI					
	Front Side Bus	533/800/1066 MHz					
Expansion Slot	PCIe x16	4.0 GB/s per direction, 1 slot					
	PCIe x4	1.0 GB/s per direction, 1 slot					
	PCI	32-bit/33 MHz, 2 slots					
Memory	Technology	Dual channel DDR2 533/667/800 MHz					
	Max. Capacity	8 GB					
	Socket	4 x 240-pin DIMM					
Graphics	Embedded	Intel GMA 3000 sharing 256 MB system memory					
	Add-on	PCIe x 16 slot					
Ethernet	Interface	10/100/1000 Mbps					
	Controller	GbE LAN: Intel 82566DM					
	Connector	RJ-45 x 1					
SATA II	Max. Data Transfer Rate	300 MB/s					
EIDE	Channel	7					
	Mode	ATA 100/66/33					
I/O Interface	Channel	1 (max. 2 devices)					
	VGA	1					
	USB	10					
	Audio	8-CH HD Audio (Mic-in, Line-in, Line-out, CD-in, 6 jacks)					
	Serial	1 (RS-232)					
	Parallel	1 (SPP/EPP/ECP)					
	FDD	1					
	PS/2	2 (1 x keyboard and 1 x mouse)					
	eSATA	1					
	IEEE 1394	2 (1 on rear panel, 1 on internal connector)					
Watchdog Timer	Output	System reset					
	Interval	Programmable 1~255 sec/min					
Misc	TPM	Support TPM 1.2 (optional TPM daughter board)					
Power Requirement	Power On	Pentium 4 3.4 GHz, 1 GB SDRAM, 80 GB HDD					
		+12 V 3.07A	+5 V 10.37A	+3.3 V 2.83A	5 Vsb 0.46A		
Environment	Operating				Non-Operating		
	Temperature	0 ~ 60° C (32 ~ 131° F), depends on CPU speed and cooler solution			-20 ~ 70° C (-4 ~ 158° F)		
Physical Characteristics	Dimensions (W x D)	244 x 244 mm (9.6" x 9.6")					

Board Diagram



Ordering Information

Part Number	VGA	GbE LAN
AIMB-564VG-00A1E	Yes	Single

*AIMB-564 cannot be installed in ACP-2000MB and 1U chassis.
 **We strongly suggest using only Advantech's certified LGA 775 CPU coolers to ensure board reliability under harsh conditions.

Riser Card

Part Number	Description
AIMB-RP3PF-21A1E	2U riser card for 1 PCIe x16 and 2 PCI expansion

Bracket View



AIMB-564VG-00A1E

Packing List

Description	Quantity
IDE HDD cable	x 1
Serial ATA HDD data cable	x 4
Serial ATA HDD power cable	x 2
I/O port bracket	x 1
Startup manual	x 1
Utility CD	x 1

Accessories

Part Number	Description
1750000334	LGA775 CPU cooler (115 W)
1960022033T000	LGA775 CPU cooler for 2U chassis
9680004525	TPM daughter board
1700006915	Power relay cable to activate ACP-4000 LED indicators
1700006916	Power relay cable to activate IPC-610H LED indicators