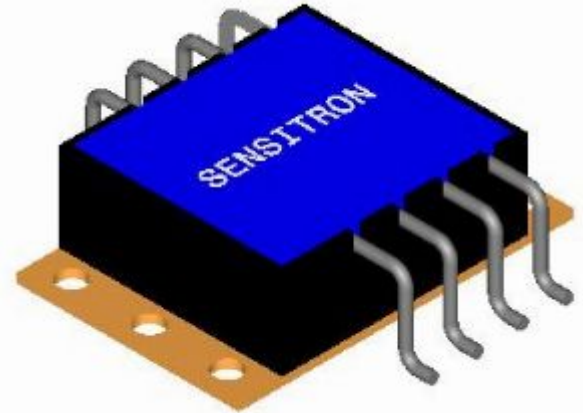
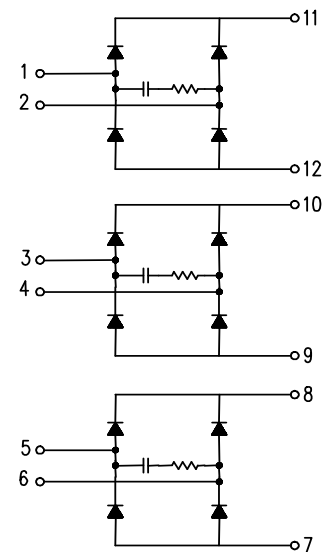
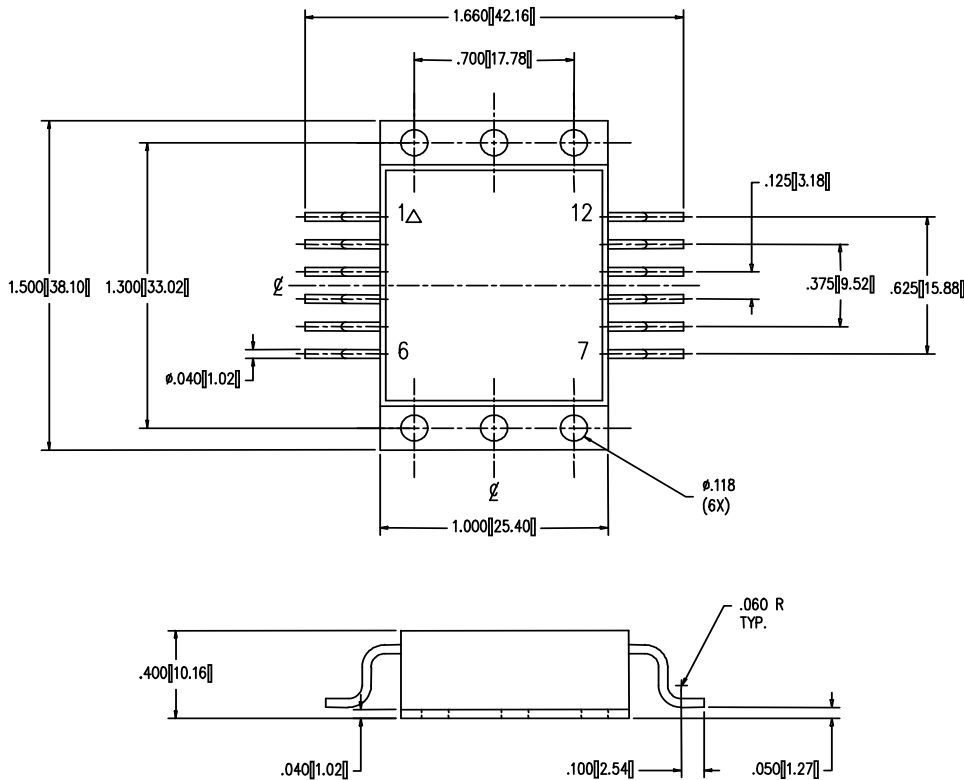






SCP-1839, SCP-1840, SCP-1841 RECTIFIER BRIDGE

- HIGH CURRENT
- LOW THERMAL RESISTANCE
- AVAILABLE IN PN OR SCHOTTKY DEVICES
- VARIOUS VOLTAGES AND CURRENTS
- VARIOUS REVERSE RECOVERY TIMES



RATING FOR SCP-1839	SYMBOL	MAX.	UNITS
BREAKDOWN VOLTAGE	V_{BR}	100	VOLTS
FORWARD CURRENT	I_F	40	AMPS
FORWARD VOLTAGE	V_F	0.85	VOLTS



CUSTOM PRODUCTS					
DEVICE TYPE/ CONFIGURATION	PACKAGE TYPE		ABSOLUTE MAXIMUM RATINGS		
			VOLTAGE	CURRENT	R _{θJC}
RECTIFIER BRIDGES Custom packages. Any types of leads or terminals.		POTTED MODULE REF# 1462	<i>400 Volts</i>	<i>70 Amp</i>	<i>0.35 °C/W</i>
		POTTED MODULE REF# 1840	<i>Power Dissipation: 17 Watt @ 100Volts</i>		<i>0.20 °C/W</i>
		POTTED MODULE REF# 1839	<i>Power Dissipation: 50 Watt @ 100Volts</i>		<i>0.25 °C/W</i>
		POTTED MODULE REF# 3124	<i>100 Volts</i>	<i>120 Amp</i>	<i>0.25 °C/W</i>

Note: Listed maximum ratings are for reference only. Products can be modified to meet any customer requirements.