

AIMB-250-B

Low Power Mini-ITX Motherboard with Rich I/O Integration Features

NEW



Features

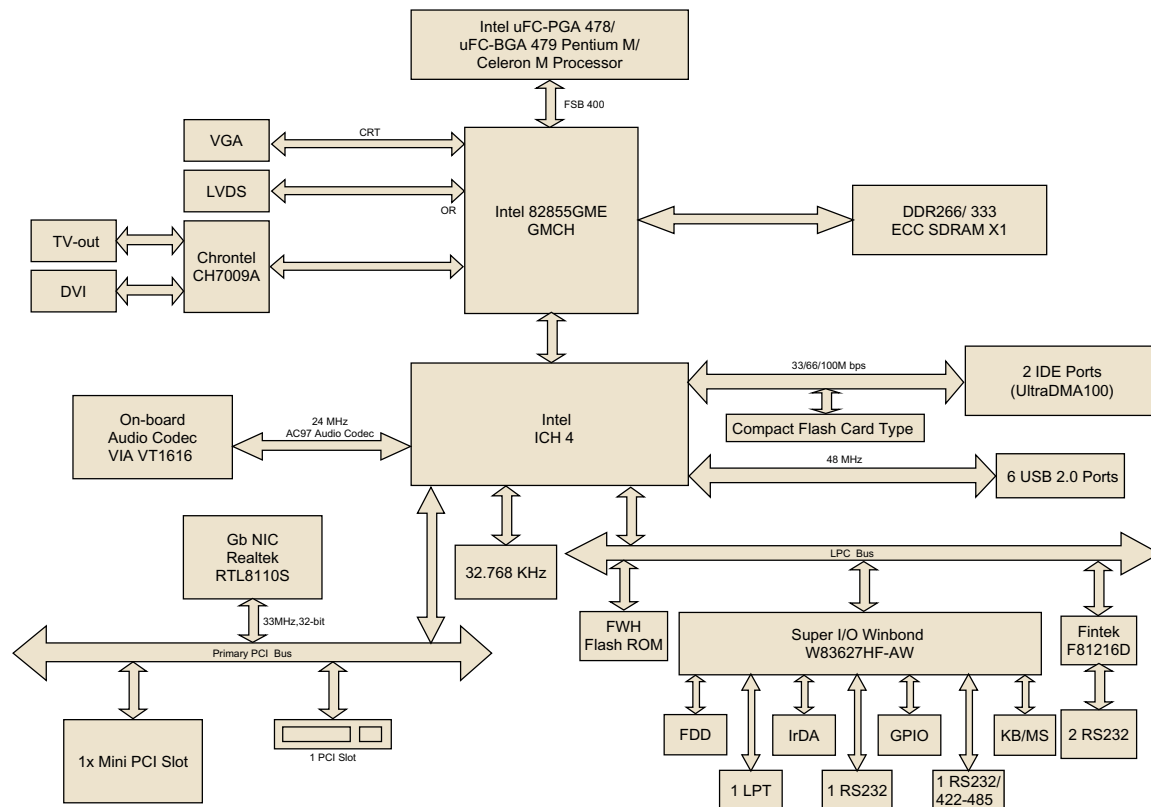
- Supports Intel® µFC-PGA 478/µFC-BGA 479 Pentium® M/Celeron® M CPU
- Intel 82855GME Chipset
- One DIMM socket supports up to 1 GB DDR 266/333 SDRAM
- 2-CH LVDS, DVI
- 5.1 CH Audio, TV-out
- Realtek™ RTL8110S Gigabit LAN
- One PCI, one Mini PCI, Type I/II CF
- Four COM, six USB 2.0, 16-bit GPIO



Specifications

| | | | | |
|--------------------------|----------------|--|-----------------|--------|
| Processor System | CPU | Intel Pentium M | Intel Celeron M | |
| | Max. Speed | 1.8 GHz | 1.5 GHz | |
| | Front Side Bus | 400 MHz | 400 MHz | |
| | L2 Cache | 2 MB | 1 MB | |
| | Chipset | Intel 82855GME + ICH4 | | |
| | BIOS | Award™ 4Mb FWH | | |
| Expansion Slot | PCI | 32-bit/33MHz, 1 slot | | |
| | Mini-PCI | 32-bit/33MHz, 1 slot | | |
| Memory | Technology | DDR 266/333 SDRAM (ECC/Non-ECC support) | | |
| | Max. Capacity | 1 GB | | |
| | Socket | One 184-pin DIMM socket | | |
| Graphic | Controller | Chipset Integrated VGA Controller | | |
| | VRAM | Shared system memory up to 64 MB video memory | | |
| | LVDS | Single channel 18-bit/Dual-channel 36-bit LVDS | | |
| | TV-Out | Supports both S-video and composite video | | |
| | DVI | Chrontel® CH7009A TV encoder supports both NTSC/PAL | | |
| | Dual Display | Chrontel CH7009A DVI transmitter up to 135M pixels/second CRT + LVDS, or DVI/TV-out + LVDS or CRT + DVI | | |
| Ethernet | Interface | 10/100/1000Base-T | | |
| | Controller 1 | LAN 1 Realtek™ RTL8110S Gigabit LAN (PCI) | | |
| | Connector | 1 (RJ45) | | |
| EIDE | Mode | 2 x EIDE (Ultra DMA 100) | | |
| | Channel | 2 | | |
| Rear I/O | VGA | 1 | | |
| | Ethernet | 1 | | |
| | USB | 2 (USB 2.0 ports) | | |
| | Audio | Mic-In, Line-In, Line-Out (VIA® VT1616 supports 5.1 CH AC97 Audio) | | |
| | Parallel | 1 | | |
| | Serial | 1 (RS-232/422/485), supply 5 V or 12 V via jumper | | |
| | PS/2 | 2 (keyboard and mouse) | | |
| Internal Connector | LVDS | 1 | | |
| | TV-Out | 1 | | |
| | DVI | 1 | | |
| | USB | 4 (USB 2.0 ports) | | |
| | Serial | 3 | | |
| | IDE | 2 (40/44 Pin) | | |
| | Compact Flash | 1 | | |
| | IrDA | 115k bps, IrDA 1.0 compliant | | |
| | FDD | 1 | | |
| | DIO | 16-bit General Purpose I/O for DI and DO | | |
| Watchdog Timer | Output | System reset | | |
| | Interval | Programmable 1 – 255 sec. | | |
| Power Requirement | Typical | Pentium M 1.8 GHz, 256 MB DDR SDRAM | | |
| | | +5 V | +3.3 V | +12 V |
| | | 3.61 A | 3.72 A | 0.31 A |
| | | | | +5 VSB |
| Environment | Operating | 0 – 60° C (32 – 140° F) | | |
| | Temperature | | | |
| Physical Characteristics | Dimensions | 170 mm x 170 mm (6.69" x 6.69") | | |

Block Diagram



Ordering Information

| Part Number | Specification |
|-----------------|---|
| AIMB-250F-00B1E | Intel Pentium M/Celeron M Mini ITX Motherboard with VGA, 2-CH LVDS, DVI, TV-out, 5.1 CH Audio, Gb LAN, CF, PCI, Mini PCI, 4 COM, 6 USB 2.0 & GPIO |

Packing List

| Description | Quantity |
|------------------------|----------|
| AIMB-250 SBC | x 1 |
| IDE HDD cable (40 pin) | x 1 |
| IDE HDD cable (44 pin) | x 1 |
| FDD cable | x 1 |
| CPU Cooler | x 1 |
| I/O port bracket | x 1 |
| Startup Manual | x 1 |
| Driver CD | x 1 |
| Serial cable (RS-232) | x 3 |

Bracket View



AIMB-250F-00B1E

Accessory

| Part Number | Description |
|-------------|--------------|
| 1700003434 | TV-Out cable |
| 1700003433 | USB cable |
| 1700003435 | DVI cable |