

### Specification

### LX120W . LX124W

All exposed cast aluminum components are made of non corrosive pure aluminum copper free (Aluminum is less than .1% copper content.#356 alloy.)

Finish: All polyester powder baked coatings preceded with a 5 baths preparation process. Meets military grade MIL-C781706 with a 2000 hours salt spray test.

- Pulse rated medium base porcelain socket.
  - 75W/600V thermoplastic compact fluorescent socket.
  - One-piece molded silicone gasket with memory retention.
  - High power factor CWA ballast. Or 98% P.F.electronic smart ballast with end of life detection for compact fluorescent.
  - All stainless steel hardware.
  - All Moving and removable parts are sealed with a memory retention silicone gasket.
  - Cast aluminum swing out hinge mechanism for quick maintenance access.
- 1 - Cast aluminum plate . Secures to the wall with an 11 ga. galvanized mounting plate .
  - 2 - 2"x4" extruded aluminum mounting arm support with integral compact fluorescent electronic ballast.
  - 3 - One piece copper free cast aluminum pyramid housing.
  - 4 - Standard specular multi facet reflector,with type V light distribution.
  - 5 - Tempered frosted glass for luminous faces.
  - 6 - Hinge frame slider allowing to keep the luminaire lens frame in open position during maintenance.
  - 7 - Clear tempered glass lens.
  - 8 - Stainless steel captive hexagonal cap screws .
  - 9 -Cast aluminum sealed removable regressed glass frame, with perimeter memory retention embedded silicone gasket.

**CFL** Light sources enclosed pyramid housing.

**LX120W:** Wall mount

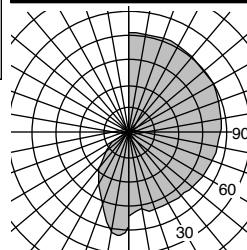
**LX120:** Pole mount.(With ACA2 or ACW2 attachments)  
Fits with 4 or 5" dia. poles.

**H.I.D** Light sources enclosed pyramid housing.

**LX124W:** Wall mount (H.I.D.) remote ballast.

**LX124:** Pole mount.: (H.I.D.) Ballast in pole.  
Fits with 5" dia. poles only  
(With ACA2 or ACW2 attachments)

### Photometry



Separate updated technical specification sheets with related models and light sources with I.E.S formatted photometry are available on [www.luminis.com](http://www.luminis.com).

For options details and specifications, please refer to pages 42 -54-72

### Certification

UL. Wet Location.

### Mounting

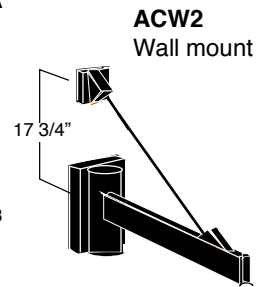
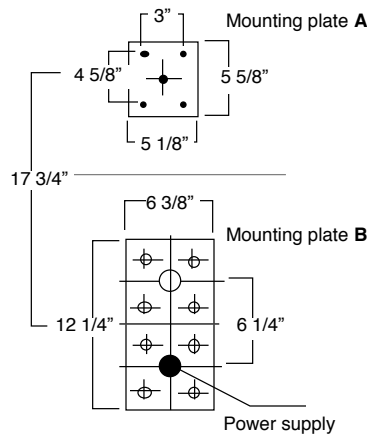
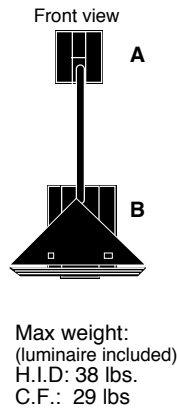
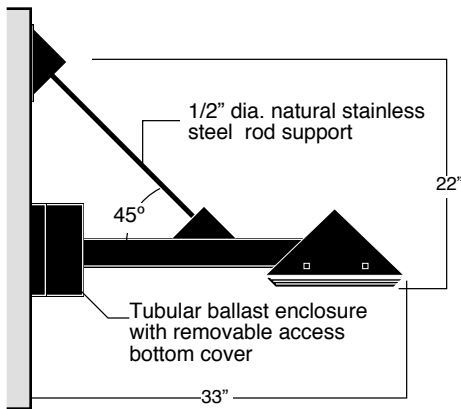
Max.weight: 22 lbs.

Installation: Mounts over a standard 4" octagonal electrical box with 3 1/2" c/c mounting holes.  
(by others ) additional separate mounting holes are provided with wall plate.

Model#	Mounting	Light source selection	Voltage	Finish	Options
 <input type="checkbox"/> <b>LX120</b> <input type="checkbox"/> * <b>LX124</b>	Mounting attachments <input type="checkbox"/> <b>ACA2</b> <input type="checkbox"/> <b>ACW2</b>	<b>LX124</b> <b>LX124W</b> <b>MH (ED17)</b>	<b>120 V</b> Standard factory prewired (If no voltage is specified) For other voltages, please specify with catalog number.  <b>H.I.D.</b> <input type="checkbox"/> 208 V <input type="checkbox"/> 240 V <input type="checkbox"/> 277 V <input type="checkbox"/> 347 V  <b>COMP. FLUO.</b> <b>Smart ballast 120/277</b> <input type="checkbox"/> 347 V (To specify)	(Refer to color chart) <u>Standard selection</u> <input type="checkbox"/> <b>WHT:</b> Snow white <input type="checkbox"/> <b>BKT:</b> Jet black <input type="checkbox"/> <b>BZT:</b> Bronze <input type="checkbox"/> <b>GRT:</b> Titanium gray <input type="checkbox"/> <b>DGT:</b> Gun metal <input type="checkbox"/> <b>CHT:</b> Champagne <input type="checkbox"/> <b>MST:</b> Matte silver <input type="checkbox"/> <b>GNT:</b> Forest green <u>Optional colors</u> <input type="checkbox"/> <b>CS:</b> Custom color <input type="checkbox"/> <b>RAL:</b> RAL# color	<b>Accessories</b> <input type="checkbox"/> <b>RL3:</b> Type III semi specular reflector. (Single lamps only.) <input type="checkbox"/> <b>RL4:</b> Forward Throw type IV distribution RL3 is available with LX124 only. RL4 is available with LX120 & LX124 series single lamp only)  <b>Electrical</b> <input type="checkbox"/> <b>FS:</b> Fuse <input type="checkbox"/> <b>PH1:</b> 120/277V photo cell <input type="checkbox"/> <b>PH2:</b> 347V photo cell <input type="checkbox"/> <b>EM42S:</b> 1 lamp (26/32/42W) EM battery. With LX120W only  Note: EM optional battery test switch and pilot lamp are installed remotely. (Refer to page 72)
		<input type="checkbox"/> M70 <input type="checkbox"/> M100 <input type="checkbox"/> M150 <input type="checkbox"/> M175			
		<b>HPS (ED17)</b> <input type="checkbox"/> H70 <input type="checkbox"/> H100 <input type="checkbox"/> H150			
		<b>LX120</b> <b>LX120W</b> <b>CF (Gx24q)</b> <b>Single lamp</b> <input type="checkbox"/> F142 <input type="checkbox"/> F157 <input type="checkbox"/> F170  <b>Two lamp</b> <input type="checkbox"/> F226 <input type="checkbox"/> F232 <input type="checkbox"/> F242			
<input type="checkbox"/> <b>LX120W</b> <input type="checkbox"/> * <b>LX124W</b>	Wall mount Wall mount Remote H.I.D.ballast	Best results with H.I.D. Clear lamps (Lamps by others)			

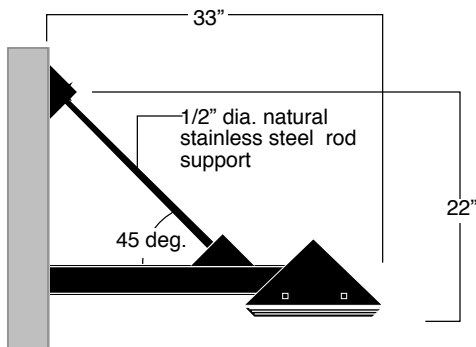
\* **LX120 & LX124** Series require a 5" O.D. pole ( Please refer to page 146)

luminaires may be altered for design improvements or discontinued without prior notice.

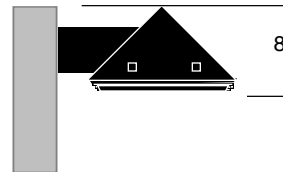
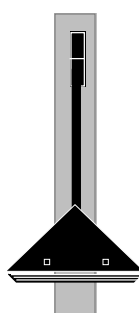


**LX120-ACW2 Compact fluorescent**  
**LX124-ACW2 H.I.D.**

Extruded aluminum wall mounted adaptor . 5" dia.x 12 3/4" lg. tubular ballast enclosure with removable cover for access to ballast tray.  
Cast aluminum wall mounted plate. 1/2" dia.stainless steel rod support. Extruded arm and all other parts are painted same color as luminaire .



Front view



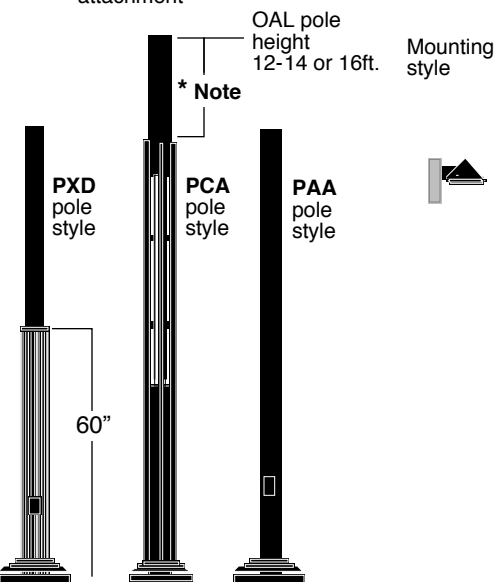
**LX150-PC Compact fluorescent**  
**LX150-PH H.I.D.**

E.P.A.: .74  
Extruded aluminum side pole mounting adaptor. 2" X 4" Extruded arm and all other parts are painted same color as luminaire..

**LX120-ACA2 Compact fluorescent**  
**LX124-ACA2 H.I.D.**

E.P.A.: 2.0  
Extruded aluminum side pole mounting adaptor.  
1/2" dia. stainless steel natural rod support.  
Extruded arm and all other parts are painted same color as luminaire.

\* Note: 36" extension with ACA2 attachment  
24" extension with LX150PC / LX150PH attachment



**Compatible poles listing.**

Post side mount for  
LX150PC  
(For Luxor Compact Fluorescent.)

Post side mount for  
LX150PH  
(For Luxor HID.)

4"O.D.	5"O.D.	4"O.D.	4"O.D.
PAA410-APC	PAA510-APC		PXD10-APC
PAA412-APC	PAA512-APC	PCA12-APC	PXD12-APC
PAA414-APC	PAA514-APC	PCA14-APC	PXD14-APC
PAA416-APC	PAA516-APC	PCA16-APC	PXD16-APC
PAA418-APC	PAA518-APC		PXD18-APC
PAA420-APC	PAA520-APC		PXD20-APC

5"O.D.	Pole height
PAA510-APC	10 ft
PAA512-APC	12 ft
PAA514-APC	14 ft
PAA516-APC	16 ft
PAA518-APC	18 ft
PAA520-APC	20 ft

Post side mount with ACA2 attachment accessory

Post top mounting for  
LX120-ACA2 and LX124-ACA2

PAA514-ACA	14 ft
PAA516-ACA	16 ft
PAA518-ACA	18 ft
PAA520-ACA	20 ft

For poles details and specification, please refer to pages 140 to 144

luminaires may be altered for design improvements or discontinued without prior notice.