

LRN1011-50

HIGH SPEED LAN 10 /100BASE-TX MAGNETICS

Single Port, Through Hole, Tab Down RJ45 Connectors

General Specifications

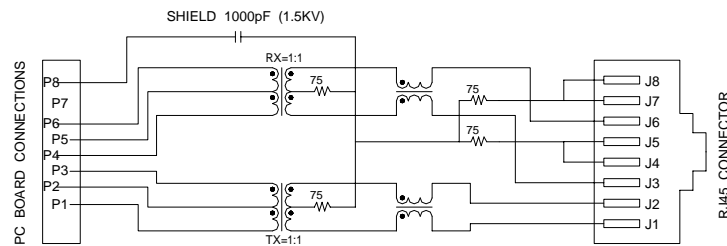
IEEE 802.3 Ethernet Compatible, Dual Channel
 Operating Temperature 0 to 70

Electrical Specification @25

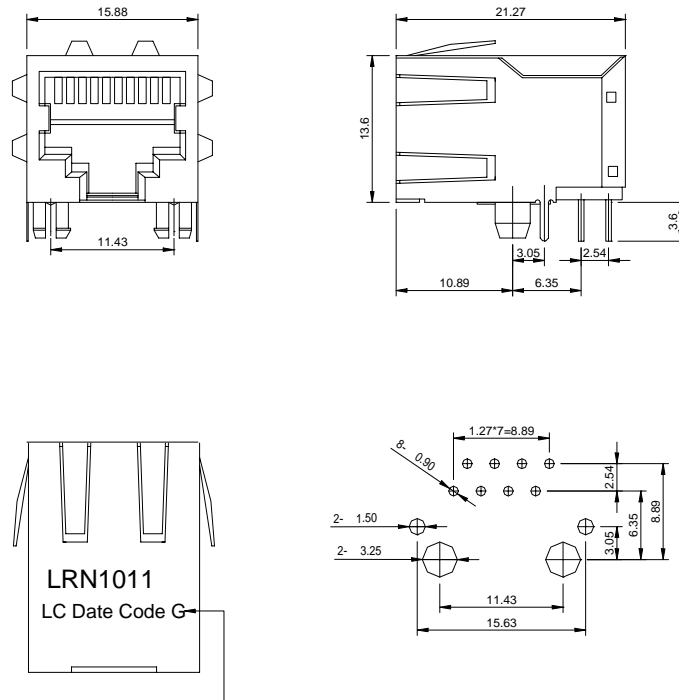
OCL:350uH min with 8mA DC bias
 Isolation HI-POT : 1500 Vrms (pri/sec)
 Turn Ratio ($\pm 2\%$) TX=1CT:1CT, RX=1:1
 CMRR(1-100MHz):-40dB typ
 Insertion Loss (0.1-100MHz): -1.1dB max
 Cross Talk(0.1-100MHz): -35dB min

Return Loss:	1-30MHz	30-60MHz	60-80MHz
	-20dB min	-14dB min	-11.5dB min

Schematic:



Dimensions:



LRN1011
 LC Date Code G

G means RoHS compliant

Units:mm

Unless otherwise specified,all tolerances are ± 0.25