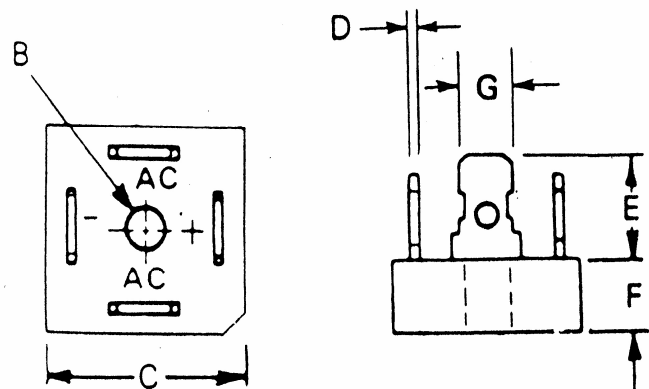


## Silicon Bridge Rectifier

DIM	INCHES	MILLIMETERS
B	.140 - .160 DIA.	3.5 - 4.1 DIA.
C	.800 MAX	20.4 MAX
D	.032	.81
E	.500 MAX	12.7 MAX
F	.300 MAX	7.62 MAX
G	.250	6.35



NOTE 1. A THIN FILM OF SILICON THERMAL COMPOUND IS RECOMMENDED BETWEEN THE BRIDGE CASE AND MOUNTING SURFACE FOR IMPROVED THERMAL CONDUCTION

<u>PART NUMBER</u>	<u>PIV/LEG</u>
B901-5	50
B901-10	100
B901-20	200
B901-40	400
B901-60	600
B901-80	800
B901-100	1000
B901-120	1200

**ELECTRICAL RATINGS**

AVERAGE FORWARD CURRENT @ 50° C (AMPS)	8.0 AMPS
MAXIMUM SINGLE CYCLE SURGE CURRENT (AMPS)	250 AMPS
MAXIMUM FORWARD VOLTAGE DROP @ If = 3 AMPS/SECTION (VOLTS)	1.0 VOLTS
MAXIMUM REVERSE CURRENT @ PIV @ 25° C	5.0 uA
OPERATING TEMPERATURE RANGE ( C )	-55 TO 150 CASE

(203) 467-2591 TEL  
 (203) 469-5928 FAX  
 Email: Info@ edal.com  
 Internet: http://www.edal.com

**EDAL industries, inc.**

51 Commerce St. East Haven, CT 06512