

# M83723/70 Receptacle Adapter



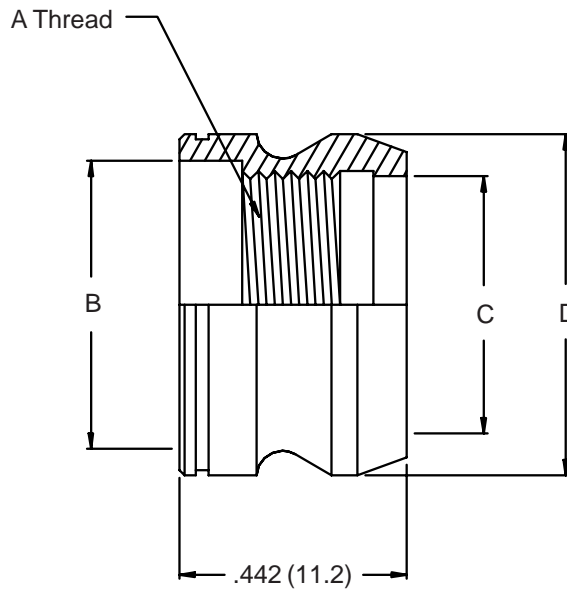
Miscellaneous  
Accessories

MIL-DTL-83723  
Series III  
Classes A, G, R and W

**M83723/70 W 22**

Basic Part No. \_\_\_\_\_ Dash No. \_\_\_\_\_

Material and Finish:  
 A = Aluminum, Black Anodize  
 R = Aluminum, Electroless Nickel  
 G = Corrosion Resistant Steel  
 Passivate  
 W = Aluminum, Cadmium Olive Drab over  
 Electroless Nickel



**TABLE I**

| Shell Size | A Thread UNEF-2B | B Dia Max    | C Dia        | D Dia Max    |
|------------|------------------|--------------|--------------|--------------|
| 8          | .5264 - 24       | .579 (14.7)  | .525 (13.3)  | .689 (17.5)  |
| 10         | .6875 - 24       | .714 (18.1)  | .650 (16.5)  | .814 (20.7)  |
| 12         | .8750 - 20       | .894 (22.7)  | .840 (21.3)  | 1.001 (25.4) |
| 14         | .9375 - 20       | .954 (24.2)  | .900 (22.9)  | 1.064 (27.0) |
| 16         | 1.0625 - 18      | 1.079 (27.4) | 1.025 (26.0) | 1.189 (30.2) |
| 18         | 1.1875 - 18      | 1.204 (30.6) | 1.150 (29.2) | 1.330 (33.8) |
| 20         | 1.3125 - 18      | 1.329 (33.8) | 1.275 (32.4) | 1.455 (37.0) |
| 22         | 1.4375 - 18      | 1.454 (36.9) | 1.400 (35.6) | 1.580 (40.1) |
| 24         | 1.5625 - 18      | 1.579 (40.1) | 1.525 (38.7) | 1.705 (43.3) |

1. For complete dimensions see applicable Military Specification.
2. Metric dimensions (mm) are indicated in parentheses.