

HP 8481A HP 8482A HP 8483A POWER SENSOR

SERIAL NUMBERS

This manual applies directly to instruments with serial numbers prefixed:

HP 8481A: 2702A
HP 8482A: 2652A
HP 8483A: 2701A

With the changes described in the Appendix, this manual also applies to instruments with serial numbers prefixed:

HP 8481A: 1550A, 1926A, 2237A, 2349A, 2552A
HP 8482A: 1551A, 1925A, 2237A, 2349A, 2607A
HP 8483A: 1602A, 1925A, 2243A, 2329A, 2351A, 2405A, 2623A

For additional important information about serial numbers, see "Instruments Covered By Manual".



**HEWLETT
PACKARD**

© Copyright HEWLETT-PACKARD COMPANY 1975, 1979, 1986, 1990

MANUAL PART NO. 08481-90049

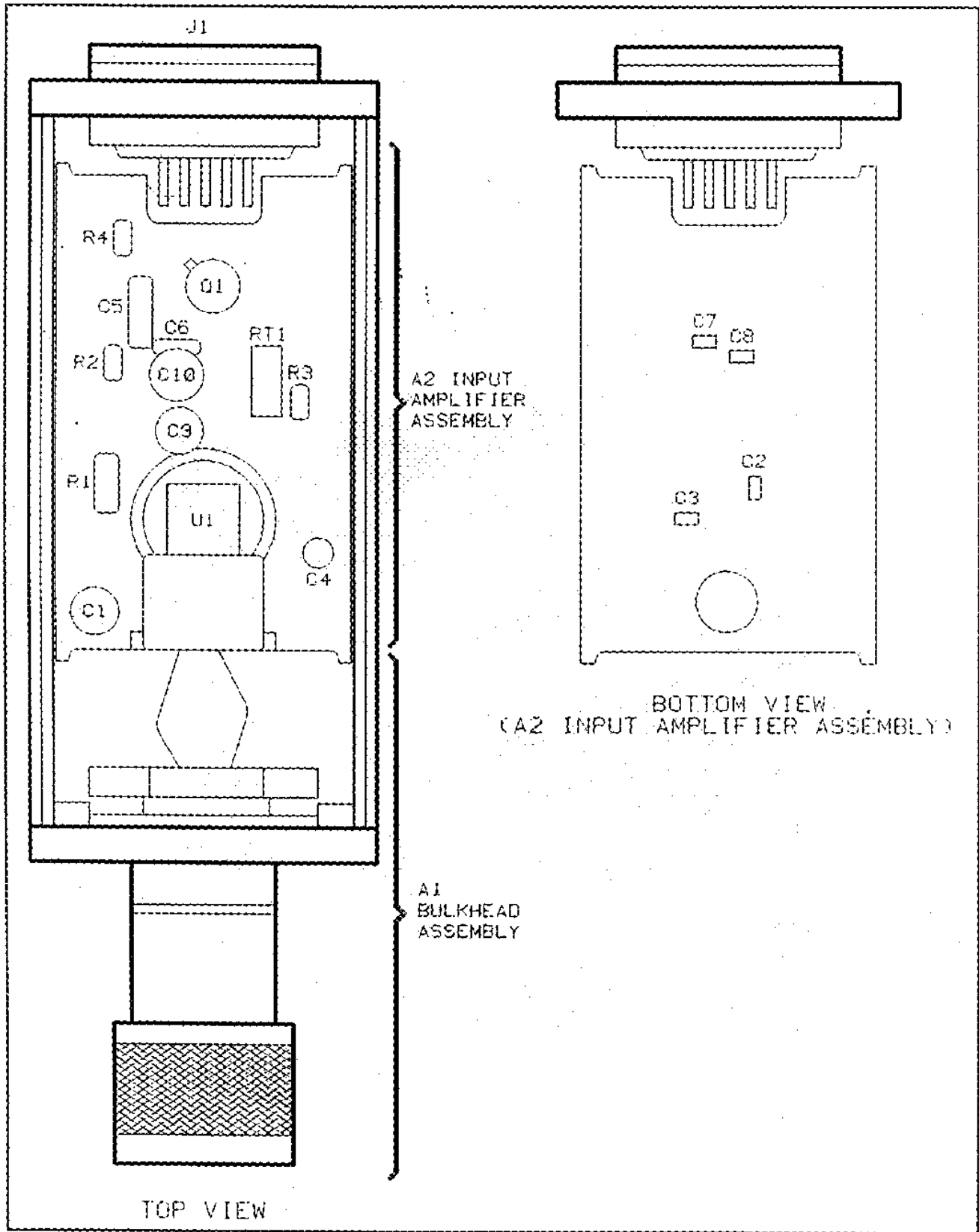


Figure 3. Component and Assembly Locations

Table 5. Replacement Parts [1 of 2]

Reference Designation	HP Part Number	C D	Qty	Description	Mfr Code	Manufacturer Part Number
A1	08481-60004	3	1	BULKHEAD, TYPE N (FOR 8481A ONLY)	28480	08481-60004
A1	08481-60005	4	1	BULKHEAD, APC-7 (FOR 8481A OPT 001 ONLY)	28480	08481-60005
A1	08482-60003	3	1	BULKHEAD, TYPE N (FOR 8482A ONLY)	28480	08482-60003
A1	08483-60003	4	1	BULKHEAD, TYPE N (FOR 8483A ONLY)	20480	08483-60003
A1MP1	1250-0918	0	1	NUT-CONN RF		
A1MP1	1250-1466	6	1	7MM RF CONNECTION ASSY (OPT 001 ONLY)		
A1MP2	1250-0816	0	1	RING, RF CONN		
A1MP3	1250-0916	9	1	BODY, RF CONN		
A1MP4	1250-0917	0	1	CONNECTOR, RF CONTACT		
A1MP4	1250-0816	8	1	7MM CONTACT (OPT 001 ONLY)		
A1MP5	1460-0977	7	1	SPRING, COMPR		
A1MP6	5020-3296	1	1	CENTER CONDUCTOR		
A1MP7	5020-3297	2	1	SLIDING CONTACT		
A1MP8	5040-0306	0	1	INSULATOR		
A1MP9	0470-0813	2	1	SEALANT-THD RED		
A1MP10	08481-20015	2	1	BULKHEAD		
A1MP11	08481-20016	3	1	CAP NUT		
A1MP12	08481-40006	3	1	POLYIRON SLUG (8481A ONLY)		
A1MP13	08481-60009	8	1	CARTRIDGE ASSY (8481A ONLY)		
A1MP13	08401-69009	6	1	RESTORED CARTRIDGE ASSY (8481A ONLY)		
A1MP13	08482-60004	4	1	CARTRIDGE ASSY (8482A ONLY)		
A1MP13	08483-60006	7	1	CARTRIDGE ASSY (8483A ONLY)		
A1MP14	3190-0831	0	1	.010 WASHER-FLAT		
A2	08481-60025	8	1	BD AY PWR SENSOR (FOR 8481A)	28480	08481-60025
A2	08482-60013	5	1	BD AY PWR SENSOR (FOR 8482A)	28480	08481-60013
A2	08483-60007	8	1	BD AY PWR SENSOR (FOR 8483A)	28480	08481-60007
A2	0590-1040	1	1	THREADED INSERT-NUT 0-80 .06-IN-LG SST	46384	YC3-1505
A2C1	0180-2515	8	1	CAP-FXD 47uF 6 V TA (FOR 8481A ONLY)	28480	0180-2515
A2C1	0180-2781	0	1	CAP-FXD 39uF 10 V TA (FOR 8482A ONLY)	28480	0180-2781
A2C1	0180-3210	2	1	CAP-FXD 47uF 10 V TA (FOR 8483A ONLY)	04213	11901161
A2C2	0160-0565	2	4	CAP-FXD 1000pF 100 V (FOR 8481A AND 8482A)		
A2C2	0160-4306	2	1	CAP-FXD 100pF 100 V (FOR 8483A ONLY)	95275	VJ0805Y102MF
A2C3	0160-0565	2	4	CAP-FXD 1000pF 100 V (FOR 8481A AND 8482A)		
A2C3	0160-4306	2	1	CAP-FXD 100pF 100 V (FOR 8483A ONLY)	95275	VJ0805Y102MF
A2C4	0180-0594	9	1	CAP-FXD 3.3uF 15 V TA		202L1602-335-M4
A2C5	0160-3094	8	1	CAP-FXD 0.1uF 100 V	04222	SR301C104KAH
A2C6	0160-3879	7	1	CAP-FXD 0.01uF 100 V	04222	SR201C103MAAH
A2C7	0160-0565	2	4	CAP-FXD 1000pF 100 V (FOR 8481A AND 8482A)		
A2C7	0160-4306	2	1	CAP-FXD 100pF 100 V (FOR 8483A ONLY)	95275	VJ0805Y102MF
A2C8	0160-0565	2	4	CAP-FXD 1000pF 100 V (FOR 8481A AND 8482A)		
A2C8	0160-4306	2	1	CAP-FXD 100pF 100 V (FOR 8483A ONLY)	95275	VJ0805Y102MF
A2C9	0180-2515	8	1	CAP-FXD 47uF 6 V TA		202L6301-476-M7-552
A2C10	0180-2545	4	1	CAP-FXD 100uF 4 V TA		202L6301-107-M6-552
A2R1	1854-0610	0	1	TRANSISTOR NPN SI TO-46 FT=800MHZ	04713	
A2R1	0698-3260	9	1	RESISTOR 464K +-1% .125W TF TC=0+-100 (FOR 8481A ONLY)	28480	0698-3260
A2R1	0757-0483	8	1	RESISTOR 562K +-1% .125W TF TC=0+-100 (FOR 8482A ONLY)	28480	0757-0483
A2R1	0698-8352	9	1	RESISTOR 787K +-1% .125W TF TC=0+-100 (FOR 8483A ONLY)	28480	0698-8352

Reference Designation	HP Part Number	C	D	Qty	Description	Mfr Code	Manufacturer Part Number
A2N2	0698-7268	1		1	RESISTOR 3.16K +-1% .05W TF TC=0+-100	24546	C3-1/8-10-3161-F
A2R3	0698-7224	3		1	RESISTOR 316K +-1% .05W TF TC=0+-100	24546	C3-1/8-10-316K-F
A2R4	0698-7226	7		1	RESISTOR 1K +-1% .05W TF TC=0+-100	24546	C3-1/8-10-1001-F
A2R11	0811-3210	1		1	RESISTOR 31.6 +-5% .05W TF TC=+5040+-250	14140	1409-1/20-3186-J
A2U1	1213-0060	8		1	IC MISC 10-8 PKG	28480	1213-0060
	0590-1040	1		1	THREADED INSERT-NUT 0-80 .06-14-L6 S51	28480	0590-1040
	5040-6938	6		1	SPACER	28480	5040-6938
J1	08481-60024	7		1	CONNECTOR ASSEMBLY, 12-PIN	28480	08481-60024
MP1	08481-40002	9		2	SHELL, PLASTIC	28480	08481-40002
MP2	08481-40002	9		2	SHELL, PLASTIC	28480	08481-40002
MP3	08481-20011	8		2	CHASSIS	28480	08481-20011
MP4	08481-20011	8		8	CHASSIS	28480	08481-20011
MP5	08481-20008	3		1	END BELL	28480	08481-20008
MP6	1460-1978	0		1	SPRING-COIL SPRN, .088-14-00, .188-14-0A-KC	28480	1460-1978
MP7	1251-3363	8		1	MUT-AUDIO CONN	28480	1251-3363
MP8	08481-00002	5		2	SHIELD	28480	08481-00002
MP9	08481-00002	5		5	SHIELD	28480	08481-00002
MP10	3030-0954	1		9	SCREW-SKT HD CAP 0-80 .188-14-L6 S51-304	28480	3030-0954
MP11	3030-0954	1		1	SCREW-SKT HD CAP 0-80 .188-14-L6 S51-304	28480	3030-0954
MP12	3030-0954	1		1	SCREW-SKT HD CAP 0-80 .188-14-L6 S51-304	28480	3030-0954
MP13	3030-0954	1		1	SCREW-SKT HD CAP 0-80 .188-14-L6 S51-304	28480	3030-0954
MP14	3030-0954	1		1	SCREW-SKT HD CAP 0-80 .188-14-L6 S51-304	28480	3030-0954
MP15	3030-0954	1		1	SCREW-SKT HD CAP 0-80 .188-14-L6 S51-304	28480	3030-0954
MP16	3030-0954	1		1	SCREW-SKT HD CAP 0-80 .188-14-L6 S51-304	28480	3030-0954
MP17	3030-0954	1		1	SCREW-SKT HD CAP 0-80 .188-14-L6 S51-304	28480	3030-0954
MP18	3030-0954	1		1	SCREW-SKT HD CAP 0-80 .188-14-L6 S51-304	28480	3030-0954
MP19	3030-0422	8		7	SCREW-SKT HD CAP 0-80 .188-14-L6 S51-302	28480	3030-0954
MP20	3030-0422	8		8	SCREW-SKT HD CAP 0-80 .188-14-L6 S51-302	00000	ORDER BY DESCRIPTION
MP21	3030-0422	8		8	SCREW-SKT HD CAP 0-80 .188-14-L6 S51-302 (USED TO MOUNT THE PRINTED CIRCUIT BOARD)	00000	ORDER BY DESCRIPTION
MP22	3030-0422	8		8	SCREW-SKT HD CAP 0-80 .188-14-L6 S51-302 (USED TO MOUNT THE PRINTED CIRCUIT BOARD)	00000	ORDER BY DESCRIPTION
MP23	3030-0436	4		1	SCREW-SKT HD CAP 0-80 .5-14-L6 S51-300	00000	ORDER BY DESCRIPTION
MP24	5040-6939	7		1	CLAMP	28480	5040-6939
MP25	5040-6940	0		1	BLDCK	28480	5040-6940
MP26	1250-0597	2		1	ADAPTER COAX STR M-N F-N	28480	5040-6940
MP27	08481-80002	3		1	8481A ID LABEL	28480	08481-80002
MP28	08482-00002	4		1	8482A ID LABEL	28480	08482-00002
MP29	08486-80001	6		1	8483A ID LABEL	28480	08486-80001
MP30	08486-80001	7		1	CAL LABEL (BLANK)	28480	08486-80001
MP31	08481-80005	6		1	MYLAR TAPE (COVERS CAL LABEL)	28480	08481-80005
MP32	08486-80005	1		1	INFO LABEL (SIDE)	26480	08486-80005
MP33	7120-2422	7		1	WARNING LABEL (SIDE)	28480	7120-2422

Table 5. Replacement Parts [2 of 2]

08481-90049

HP 8481A/82A/83A